



WALL FINISH PROFESSIONALS

TAIWAN • MALAYSIA • THAILAND

Strato.®

INTERIOR TEXTURE PAINT COLLECTION



BRICK & STONE VENEER • TEXTURE PAINT • KASTPANEL • ECES • TEXTURE COATING • PEBBLE STONE COATING



NUHAUS ENTERPRISE

  **NUHAUS_BRUNEI** | Hotline : (+673) 7306870

* Photos of the products shown in this catalogue may vary in color due to lighting condition & printing. We suggest you examine actual product samples before ordering.



STRATO-E6-2210



EDITION

06

Strato® CEMENT TEXTURE

Create everlasting look with Strato® Cement Texture. Whether you are going for the industrial, scandinavian, contemporary or minimalistic style, the backdrop of the cement texture can complete the look.













• **INTERIOR USE ONLY**
For exterior options, please see **MONOKRETE**.

Matte
& Smooth
FINISHING



Features

- Crack Resistant 
- Low VOC & Odor 
- Formaldehyde & Lead Free 
- Green Choice, Water Based & Eco-friendly 
- Easy Application & DIY Friendly 
- Anti-chalking & Efflorescence 
- Applicable on Ceiling 
- Easy Maintenance 
- Easy to Touch Up 
- Matte Finishing 

SCT-301

SILVER
GREY



Silver Grey | **SCT-301**



Natural Grey | **SCT-302**



Shark Grey | **SCT-303**



SCT-304

GRANITE
GREY



SCT-304

GRANITE
GREY

SCT-306

CHARCOAL
GREY

Interior Design by
GROUND UP



SCT-308
SHADOW
GREY



SCT-304
GRANITE
GREY



Granite Grey | **SCT-304**



Iron Grey | **SCT-305**



Charcoal Grey | **SCT-306**



Metal Grey | **SCT-307**



Shadow Grey | **SCT-308**



SCT-309

ASHES
GREY



Ashes Grey | **SCT-309**



Misty Grey | **SCT-310**



SCT-309

ASHES
GREY

APPLICATION TECHNIQUE

Preparation: - Cover the edges of surface that won't be painted by masking it with tape, paper or plastic.
- Clean up the wall surface to ensure it is free from dirt and dust.



APPLICATION VIDEO



1 PRIMER

Roll 2 layers of primer on the entire surface.
Allow 30 minutes to dry between the layers.
(The primer can be diluted with maximum 5% of clean water)

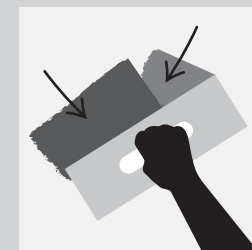
Tool: Roller



2 SANDING

Sand the entire surface in circular motion to ensure the surface is smooth.

Tool: 600 Grit Sand Paper



3 TEXTURE COAT

Scrape texture coat randomly to create pattern. Ensure the whole surface area is covered. Then apply second layer.

Tool: Stainless Steel Trowel

(use a larger trowel for a larger pattern, a smaller trowel for smaller pattern)



4 SANDING (OPTIONAL)

Sand the entire surface in circular motion to enhance the pattern.

Tool: 600 Grit Sand Paper



5 TOPCOAT

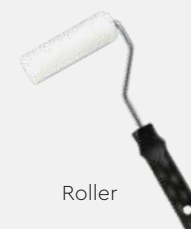
Apply SR-Top 1 on entire surface using a dry sponge in circular motions.

IMPORTANT: Use a clean and dry sponge or cleaning cloth to wipe the excess topcoat before it dries to avoid the sponge marks.

Tool: Sponge / Cleaning Cloth

IMPORTANT: Color may vary on application technique & amount of material used.

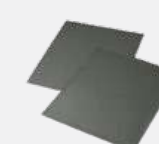
Tools:



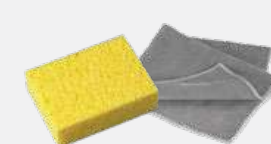
Roller



Trowel / Scraper



Sand Paper (600 Grit)



Sponge / Cleaning Cloth

PACKING DATA

1 L	Primer
1 L	Texture Coat
0.5 L	Topcoat (SR-Top 1)

Coverage (per set)

WALL	6 - 7 sqm
CEILING	5 - 6 sqm



Strato.[®] VELOURS

Rich velvety layers of color to enhance the interior space.
Each color brings out a different mood & ambience,
find a color that matches your personality.



• **INTERIOR USE ONLY**
For exterior options, please see **MONOKRETE**.

Matte
& Smooth
FINISHING



Features

Crack Resistant



Low VOC & Odor



Formaldehyde & Lead Free



Green Choice, Water Based & Eco-friendly



Easy Application & DIY Friendly



Anti-chalking & Efflorescence



Applicable on Ceiling



Easy Maintenance



Easy to Touch Up



Matte Finishing



SVL-401

CLOUDY
GREY



Cloudy Grey | **SVL-401**



Mushroom Beige | **SVL-402**



Hazel Wood | **SVL-403**

SVL-404

SUMMER
SAHARA



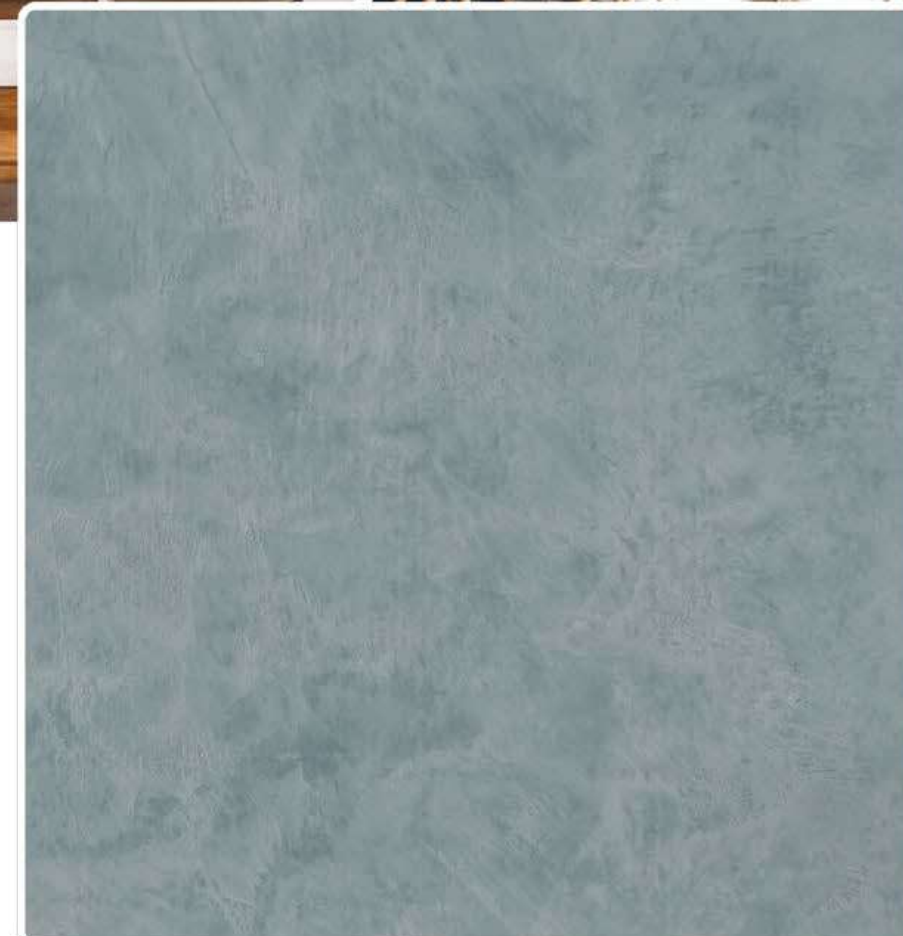
Summer Sahara | **SVL-404**



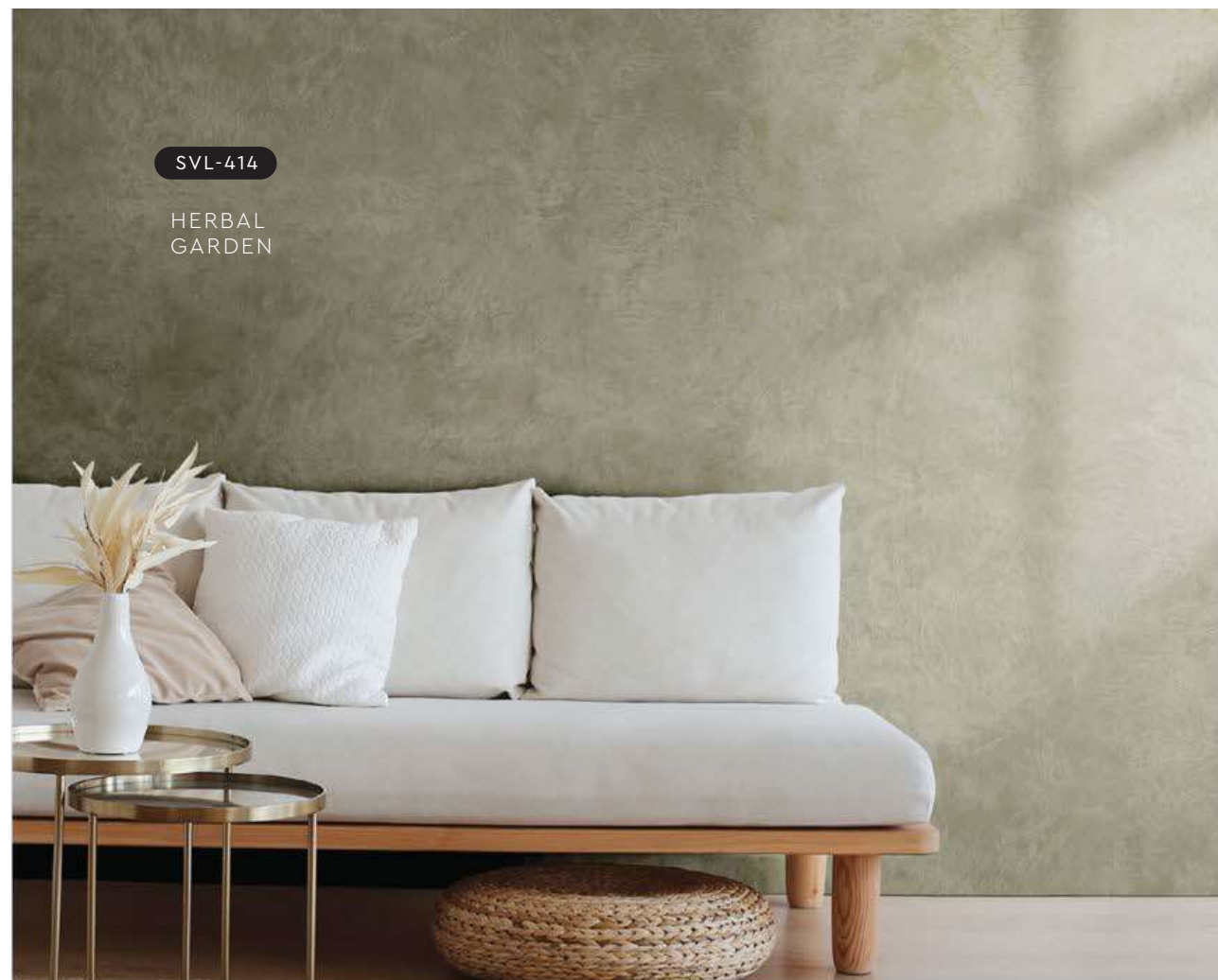
Walnut Leather | **SVL-405**

SVL-405

WALNUT
LEATHER



Brocade Blue | **SVL-406**



Frosted Mint | **SVL-411**



Vivid Emerald | **SVL-412**



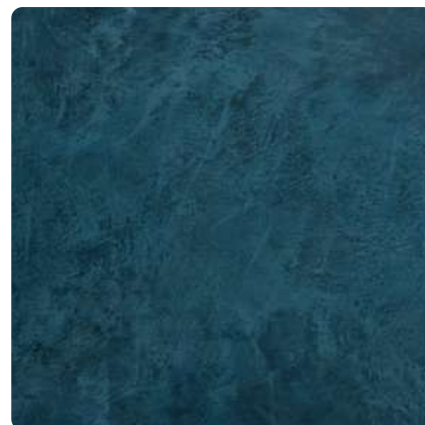
Hunter Green | **SVL-413**



Herbal Garden | **SVL-414**



Deep Marine | **SVL-407**



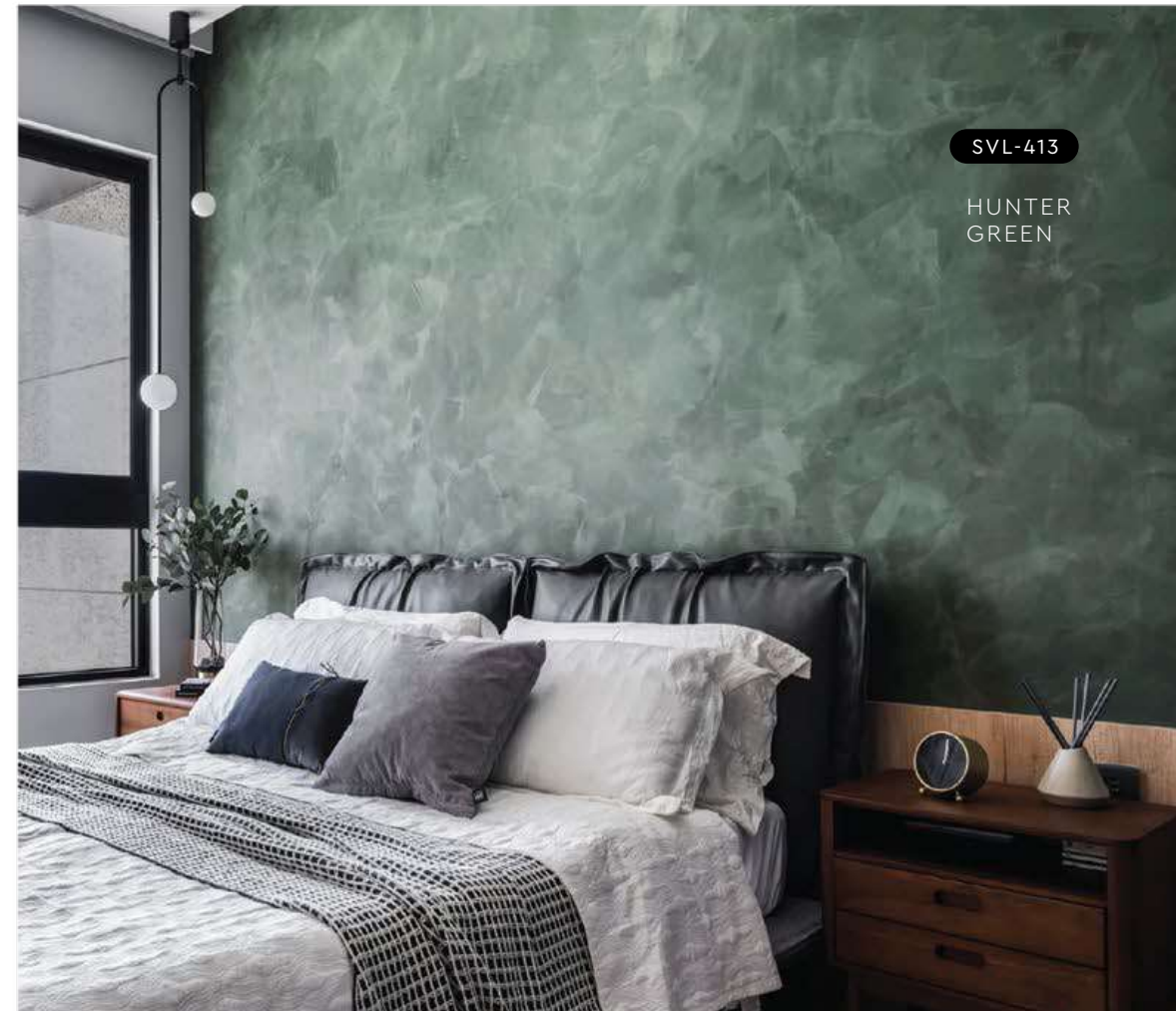
Royal Denim | **SVL-408**



Violet Memory | **SVL-409**



Rosy Mauve | **SVL-410**



SVL-417

VANILLA
CREAM

APPLICATION TECHNIQUE

Preparation: - Cover the edges of surface that won't be painted by masking it with tape, paper or plastic.
- Clean up the wall surface to ensure it is free from dirt and dust.



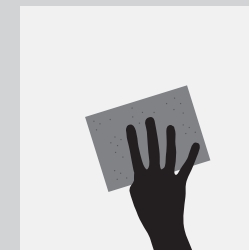
APPLICATION VIDEO



1 PRIMER

Roll 2 layers of primer on the entire surface.
Allow 30 minutes to dry between the layers.
(The primer can be diluted with maximum 5% of clean water)

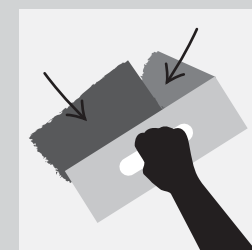
Tool: Roller



2 SANDING

Sand the entire surface in circular motion to ensure the surface is smooth.

Tool: 600 Grit Sand Paper



3 TEXTURE COAT

Scrape texture coat randomly to create pattern. Ensure the whole surface area is covered. Then apply second layer.

Tool: Stainless Steel Trowel

(use a larger trowel for a larger pattern, a smaller trowel for smaller pattern)



4 SANDING (OPTIONAL)

Sand the entire surface in circular motion to enhance the pattern.

Tool: 600 Grit Sand Paper



5 TOPCOAT

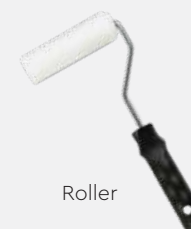
Apply SR-Top 1 on entire surface using a dry sponge in circular motions.

IMPORTANT: Use a clean and dry sponge or cleaning cloth to wipe the excess topcoat before it dries to avoid the sponge marks.

Tool: Sponge / Cleaning Cloth

IMPORTANT: Color may vary on application technique & amount of material used.

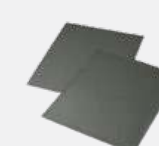
Tools:



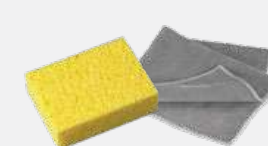
Roller



Trowel / Scraper



Sand Paper (600 Grit)



Sponge / Cleaning Cloth

PACKING DATA

1 L	Primer
1 L	Texture Coat
0.5 L	Topcoat (SR-Top 1)

Coverage (per set)

WALL	6 - 7 sqm
CEILING	5 - 6 sqm



Lime Mist | SVL-415

Flamingo Blush | SVL-416

Vanilla Cream | SVL-417

Strato® cashmere

Strato® Cashmere embodies the pinnacle of elegance in textured coating. Achieved through smooth layering and delicate craftsmanship, the finished product gives a refined and royal appearance with a lingering hint of sophistication.

• INTERIOR USE ONLY

Sandy &
Slight
Metallic
FINISHING

Features

Low VOC & Odor



Formaldehyde & Lead Free



Green Choice, Water Based & Eco-friendly



Easy, Quick Application & DIY Friendly



Easy Maintenance





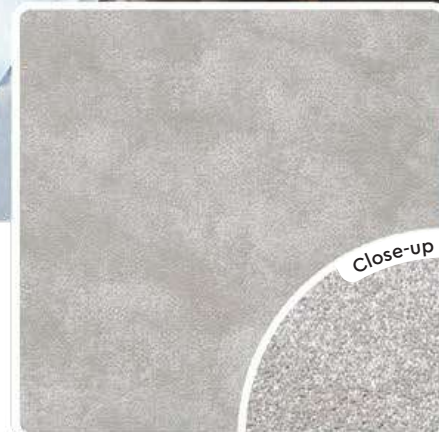
Interior Design by
METRICS
GLOBAL



Pearl White | **SCH-001**



Silver Mist | **SCH-002**



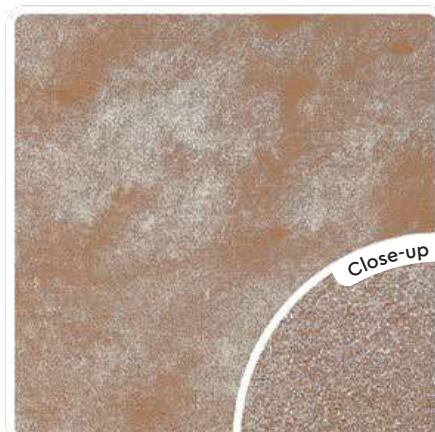
Silver Slate | **SCH-003**



Autumn Beige | **SCH-007**



Platinum Metal | **SCH-004**



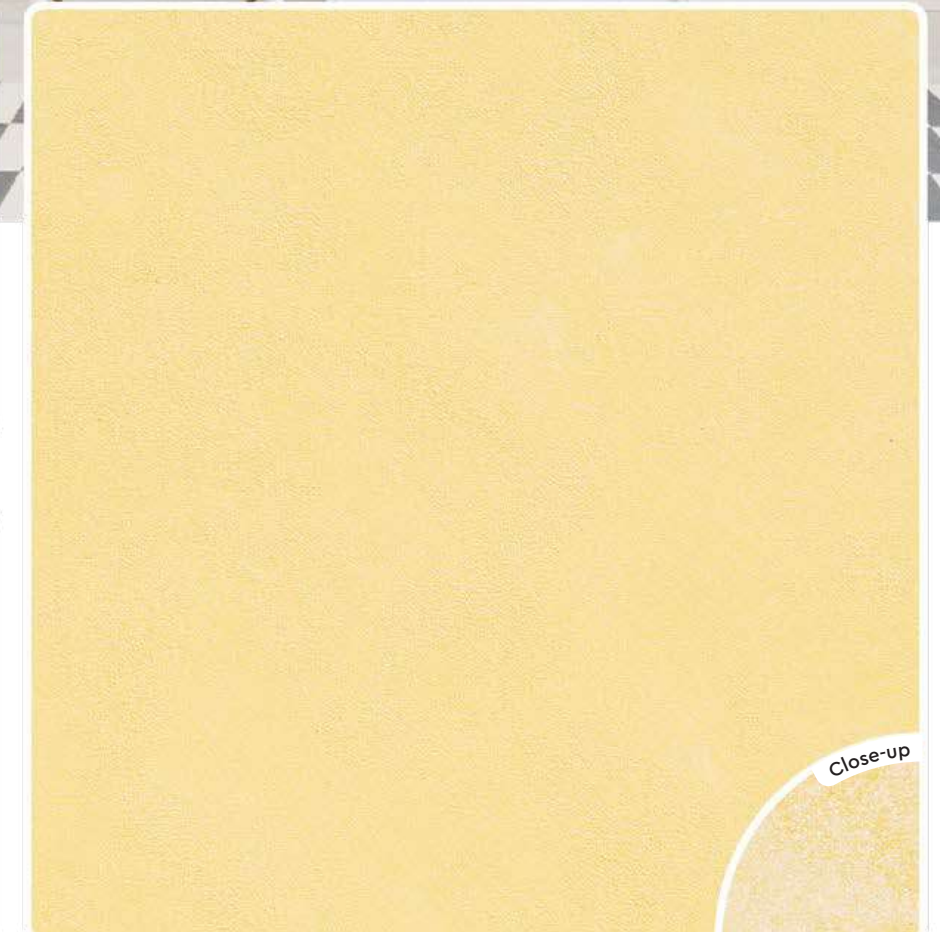
Bronze Age | **SCH-005**



Sand Castle Beige | **SCH-006**



Eggshell Beige | **SCH-008**



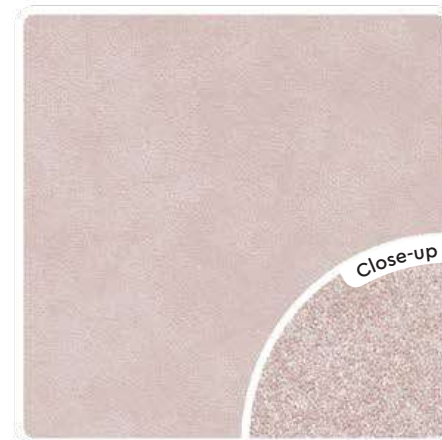
Desert Gold | **SCH-009**

SCH-015

POWDER
BLUE



Baby Doll Pink | **SCH-013**



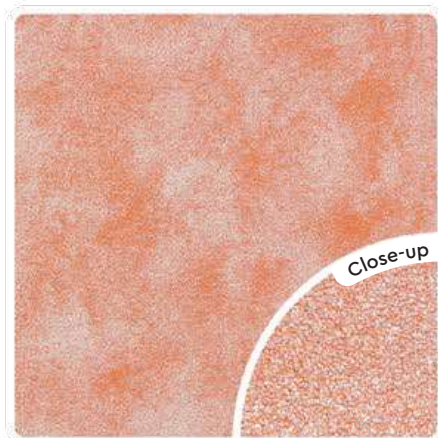
Coral Blush | **SCH-014**



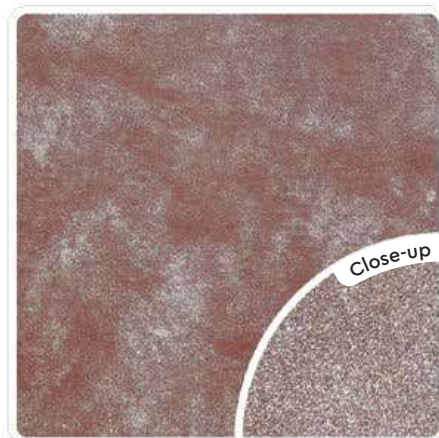
Powder Blue | **SCH-015**



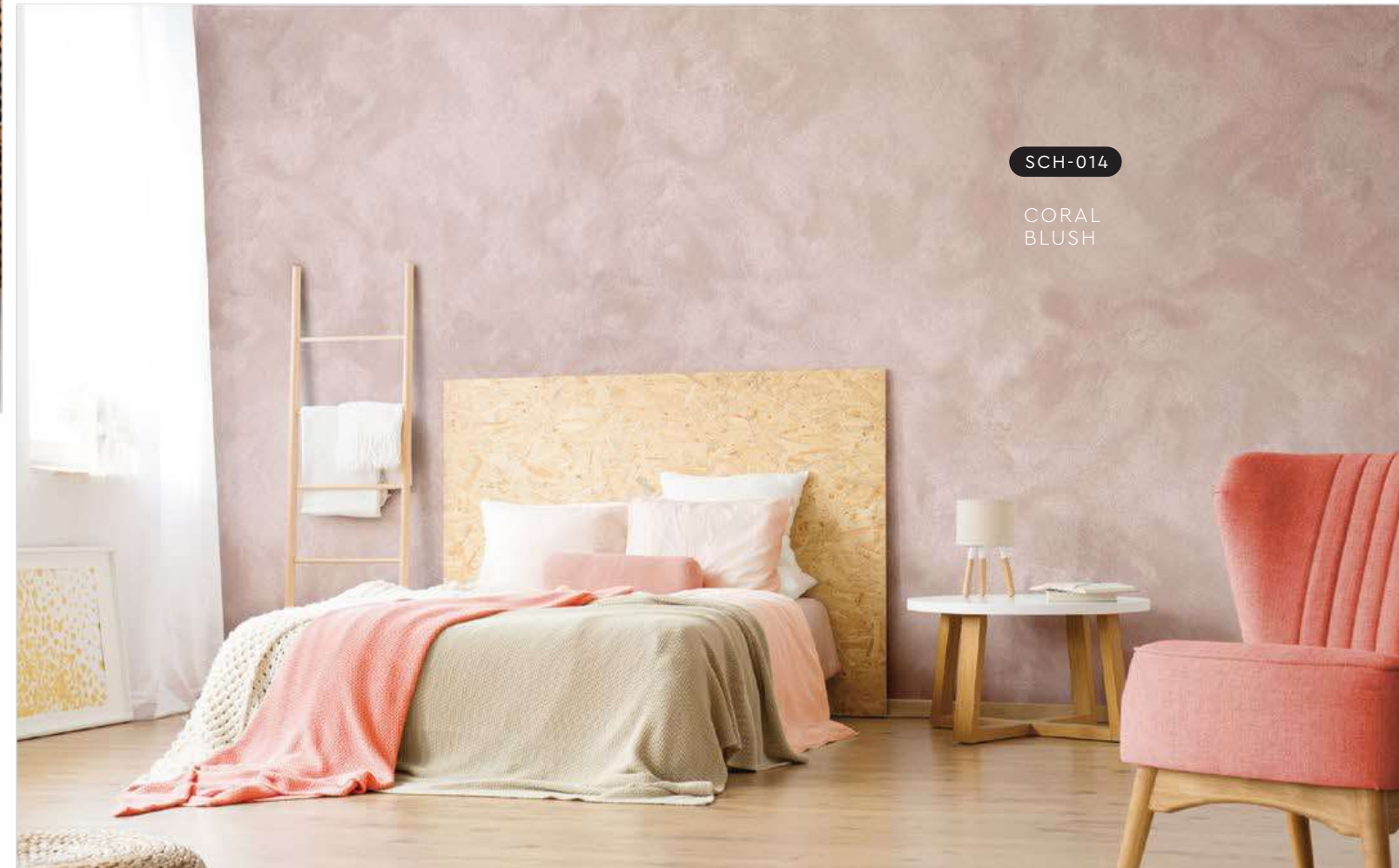
Honey Yellow | **SCH-010**



Peach Blossom | **SCH-011**



Plum Sunset | **SCH-012**

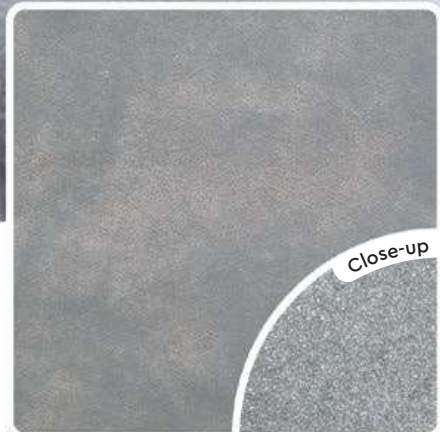


SCH-014

CORAL
BLUSH

SCH-019

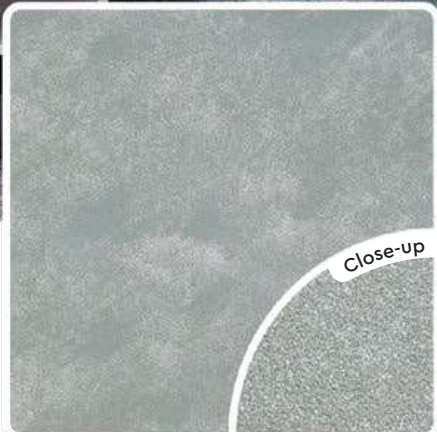
PEACOCK
BLUE



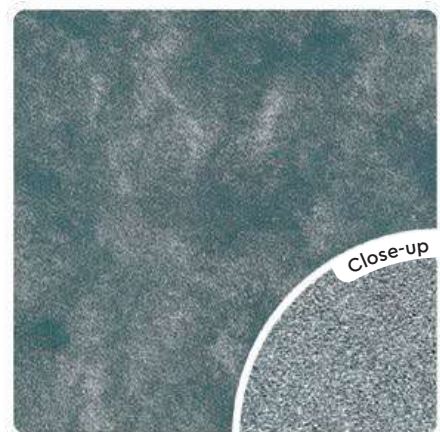
Stardust Silver | SCH-016



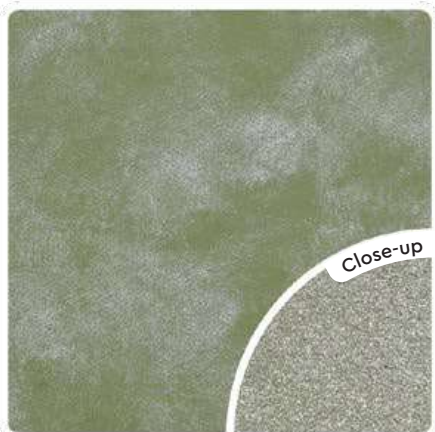
Lace Blue | SCH-017



Ash Grey | SCH-018



Peacock Blue | SCH-019



Olive Tree | SCH-020



Tropical Green | SCH-021

APPLICATION TECHNIQUE

Preparation: - Cover the edges of surface that won't be painted by masking it with tape, paper or plastic.
- Clean up the wall surface to ensure it is free from dirt and dust.



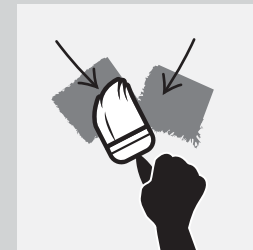
APPLICATION VIDEO



1 PRIMER

Roll 2 layers of primer on the entire surface.
Allow 30 minutes to dry between the layers.
(The primer can be diluted with maximum 5% of clean water)

Tool: Roller



2 TEXTURE COAT

Brush on texture coat in criss cross patterns. Apply 1-2 layers. Ensure the whole surface area is covered.

Tool: Brush



3 FLATTENING

Flatten the entire surface in circular motion to enhance the pattern.

Tool: Plastic Scrapper



4 TOPCOAT

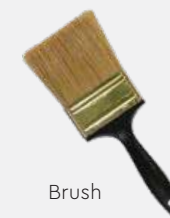
Evenly roll SR-Top 3 on entire surface. Allow to dry for 1 hour.

Tool: Roller

Tools:



Roller



Brush



Plastic Scrapper



PACKING DATA

	1 L	Primer	Coverage (per set)	
	1 L	Texture Coat	WALL	6 - 7 sqm
	1 L	Topcoat (SR-Top 3)	CEILING	5 - 6 sqm

Strato.[®] taffeta

A vibrant color layered in texture and dusted with a shimmering pearl effect crafts a bold and radiant feel onto the wall.



• INTERIOR ONLY

Features

Low VOC & Odor



Formaldehyde & Lead Free



Green Choice, Water Based & Eco-friendly



Easy, Quick Application & DIY Friendly



Easy Maintenance



SRT-219

OYSTER
BEIGE



Light Sapphire | **SRT-214**



Oyster Beige | **SRT-219**



Blue Waves | **SRT-225**



Pewter Grey | **SRT-201**



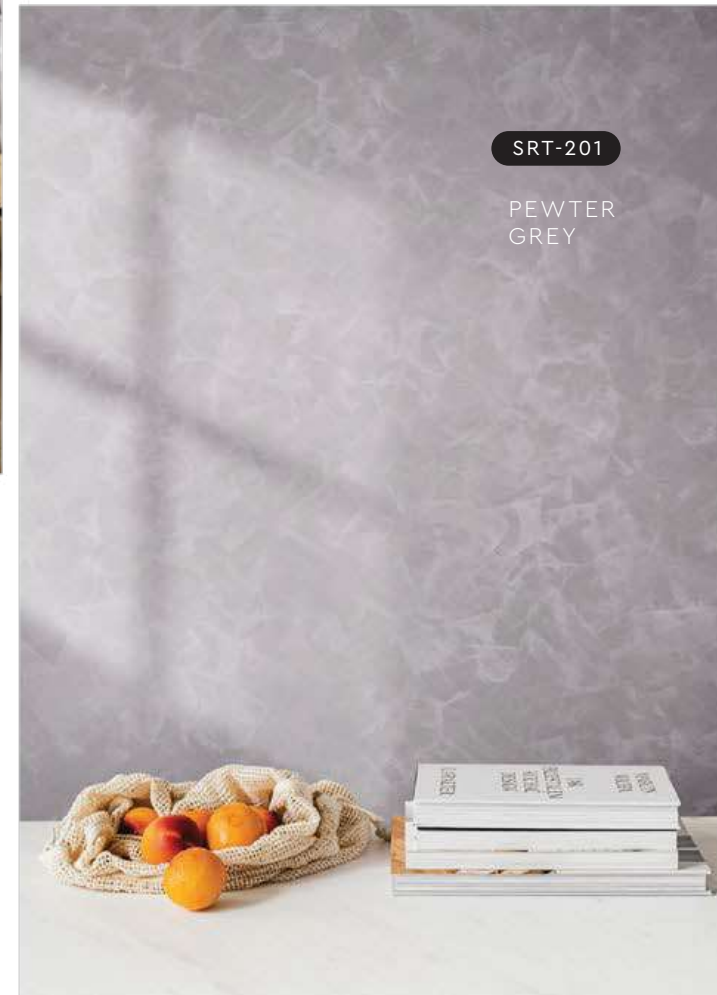
Light Steel Blue | **SRT-203**



Light Sepia | **SRT-209**

SRT-201

PEWTER
GREY



SRT-214

LIGHT
SAPPHIRE



SRT-232

PALE
LAVENDER



Malted Mocha | **SRT-231**



Pale Lavender | **SRT-232**



Ocean Surface | **SRT-233**

APPLICATION TECHNIQUE

Preparation: - Cover the edges of surface that won't be painted by masking it with tape, paper or plastic.
- Clean up the wall surface to ensure it is free from dirt and dust.



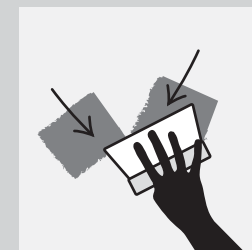
APPLICATION VIDEO



1 PRIMER

Roll 2 layers of primer on the entire surface.
Allow 30 minutes to dry between the layers.
(The primer can be diluted with maximum 5% of clean water)

Tool: Roller



3 TEXTURE COAT

Scrape texture coat in a random criss cross pattern. 2-3 layers. Every layer requires 30 minutes to dry.

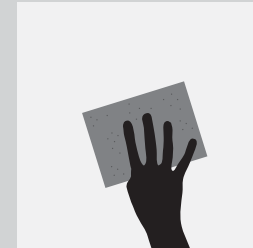
Tool: Steel Scrapper



5 TOPCOAT

Scrape on topcoat SR-Top 2 in a random criss cross overlapping patterns. Allow 1 hour to dry.

Tool: Steel Scrapper



2 SANDING (OPTIONAL)

Sand the entire surface in circular motion to ensure the surface is smooth.

Tool: 600 Grit Sand Paper



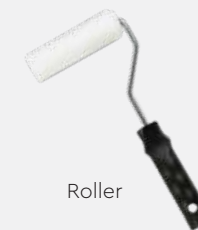
4 SANDING

Sand the entire surface in circular motion to enhance the pattern.

Tool: 600 Grit Sand Paper

✧✧ Taffeta has a **shimmering** pearl effect topcoat.
✧✧ For a **matte** finishing, please request **SR-Top 1**.

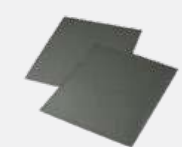
Tools:



Roller



Steel Scrapper



Sand Paper (600 Grit)

PACKING DATA

1 L	Primer
1 L	Texture Coat
0.5 L	Topcoat (SR-Top 2)

Coverage (per set)

WALL	4.5 sqm
CEILING	3.5 sqm



Strato® SATIN

INTERIOR TEXTURE PAINTS

The Strato® Satin collection highlights an array of soft-hued silky colours, creating a creamy and pearly finish for a sophisticated and refined look. Pick from a range of light to dark pastel tones to match any kind of environment, whether it's a bedroom, café, or office space.



Strato® SATIN



"Soft-hued Silky Colours"

All color shown are as close to the actual SUZUKA® Strato® Satin colors as modern printing techniques permit, nonetheless, there are still color/tone differences.

We highly recommend seeing actual samples before ordering.

IMPORTANT NOTE



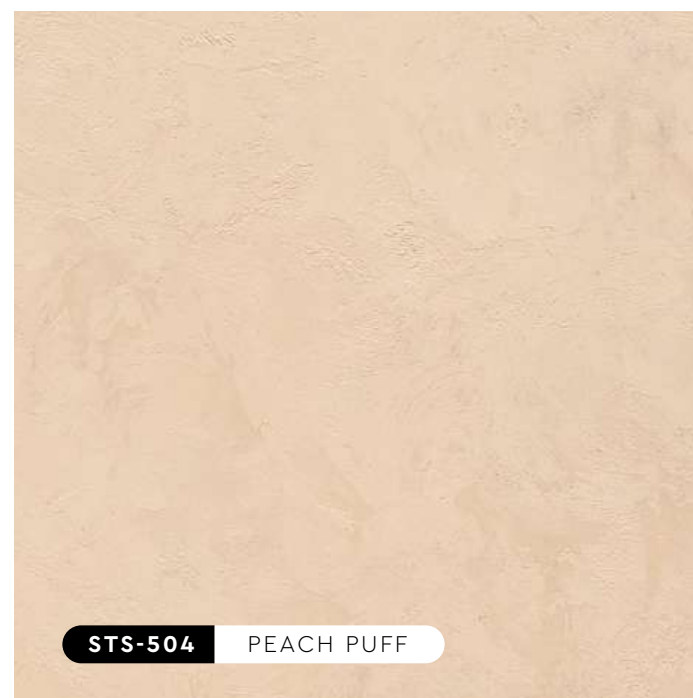
STS-501 FLORAL WHITE



STS-502 SEASHELL



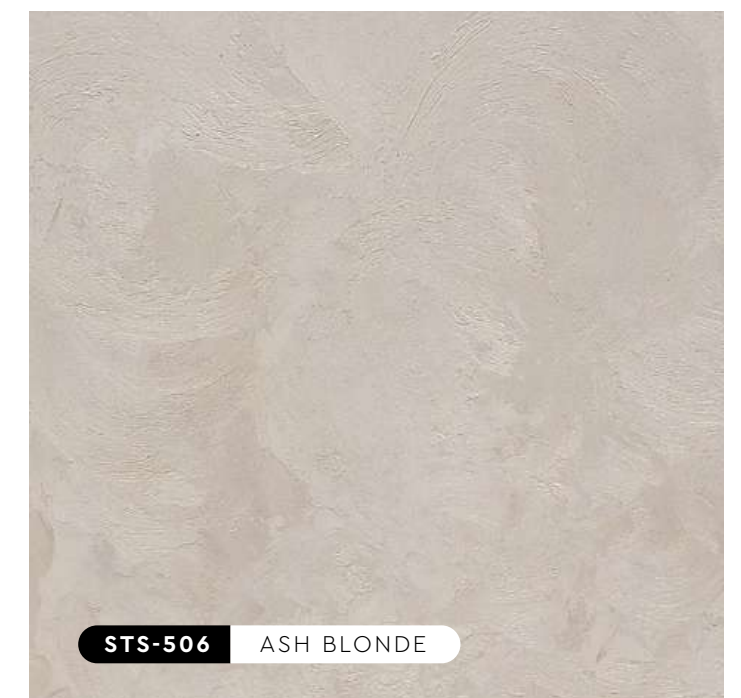
STS-503 MISTY ROSE



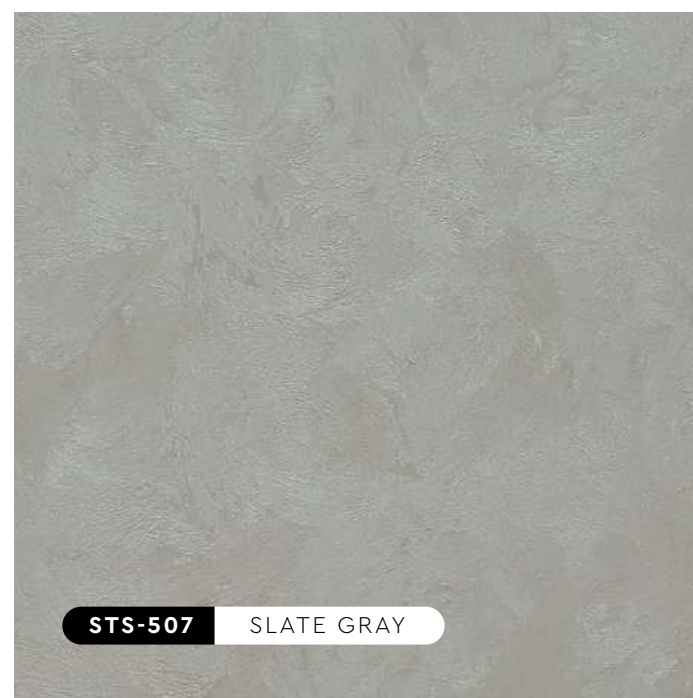
STS-504 PEACH PUFF



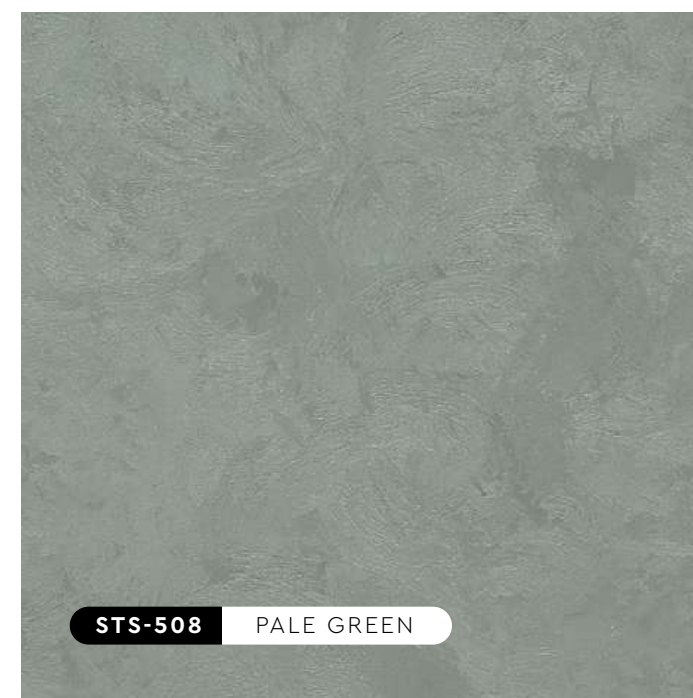
STS-505 MILKY LATTE



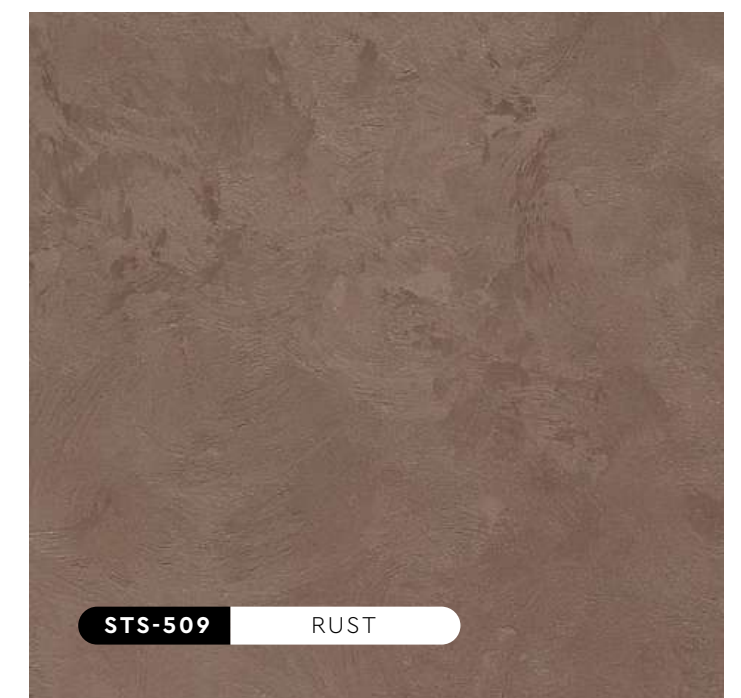
STS-506 ASH BLONDE



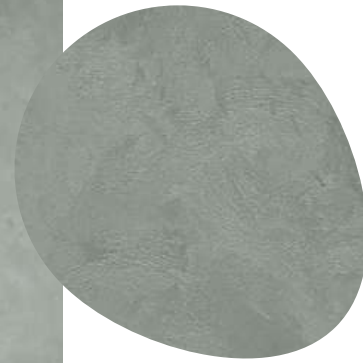
STS-507 SLATE GRAY



STS-508 PALE GREEN



STS-509 RUST



STS-508

PALE
GREEN



SLATE
GRAY

STS-507



STS-503

MISTY
ROSE



**"Creamy &
Pearly Finish"**

for a sophisticated & refined look



STS-504

PEACH
PUFF



STS-509

RUST



MILKY
LATTE

STS-505



STS-502

SEASHELL



STS-508

PALE
GREEN

PACKING DATA

1 L Primer

1 L Texture Coat

Coverage: 6 - 7 m²/l (per set)

* Piccolo tool is sold separately



Piccolo Tool*

PRODUCT FEATURES



Low VOC
& Odor



Green Choice, Water
Based & Eco-friendly



Applicable
on Ceiling



Easy to
Touch Up



Formaldehyde
& Lead Free



Easy Application
& DIY Friendly



Easy
Maintenance



Satin
Finish

APPLICATION TECHNIQUE

Preparation: - Cover the edges of surface that won't be painted by masking it with tape, paper or plastic.
- Clean up the wall surface to ensure it is free from dirt and dust.



APPLICATION VIDEO

STEP 1 : PRIMER



Roll a layer of primer on the entire surface.

STEP 2 : SANDING

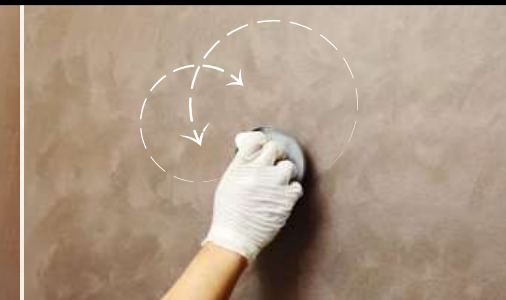


Sand surface with sandpaper (600 grit)
to ensure a smooth surface.

STEP 3 : TEXTURE COAT



First, scrape texture coat evenly
on the entire surface.



Next, use a piccolo tool to create swirl texture
effects by moving with random circular motion.

TOOLS



STS-501

FLORAL
WHITE



Strato[®] METALLICS MERINO

"A *striking textured metallic pattern* that is *linen like* that can suit *elegant* but also *rustic designs*."



PRODUCT FEATURES



Low VOC
& Odor



Green Choice, Water
Based & Eco-friendly



Applicable
on Ceiling



Easy to
Touch Up



Formaldehyde
& Lead Free



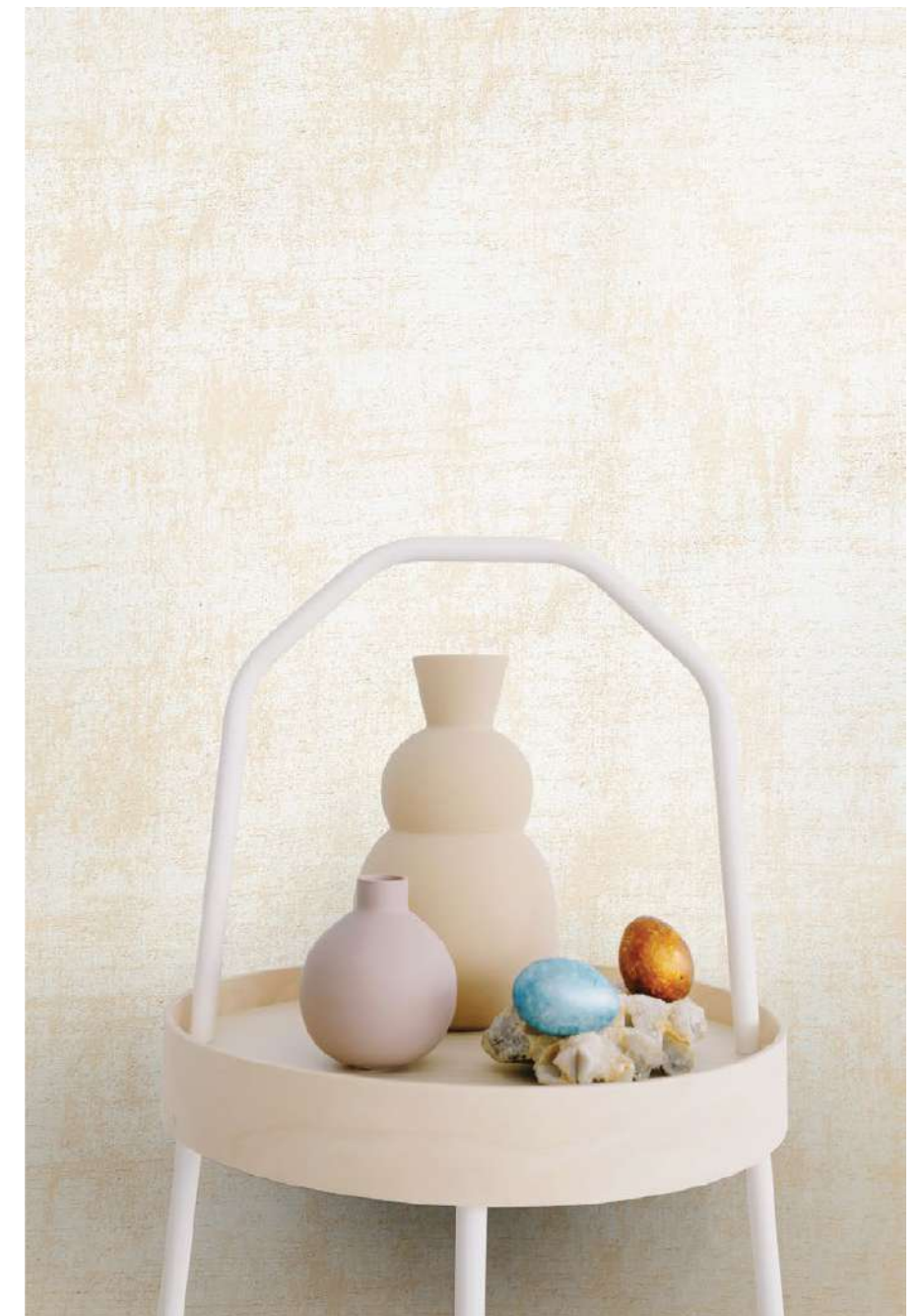
Easy Application
& DIY Friendly



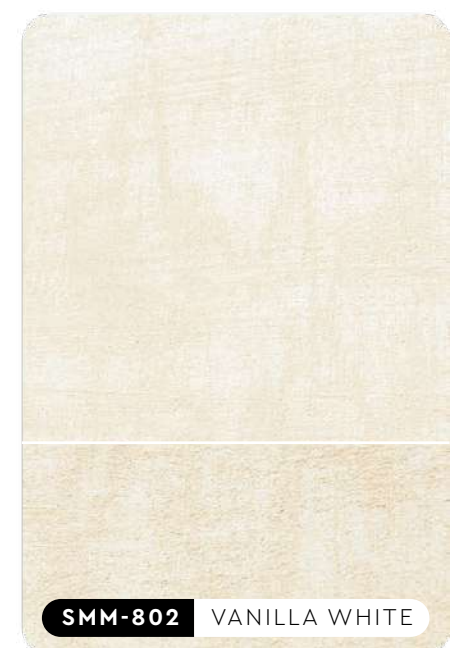
Easy
Maintenance



Metallic
Finish

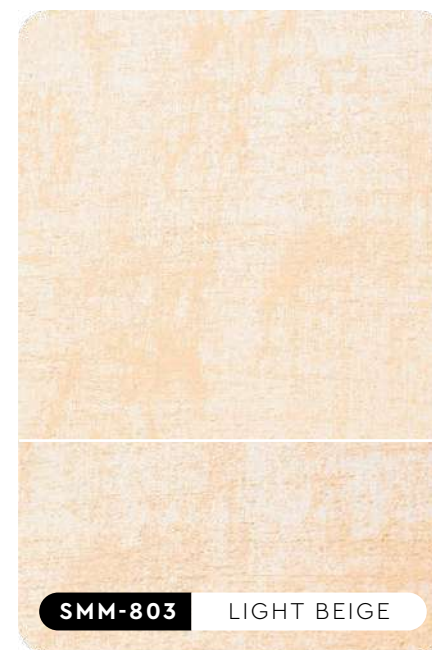
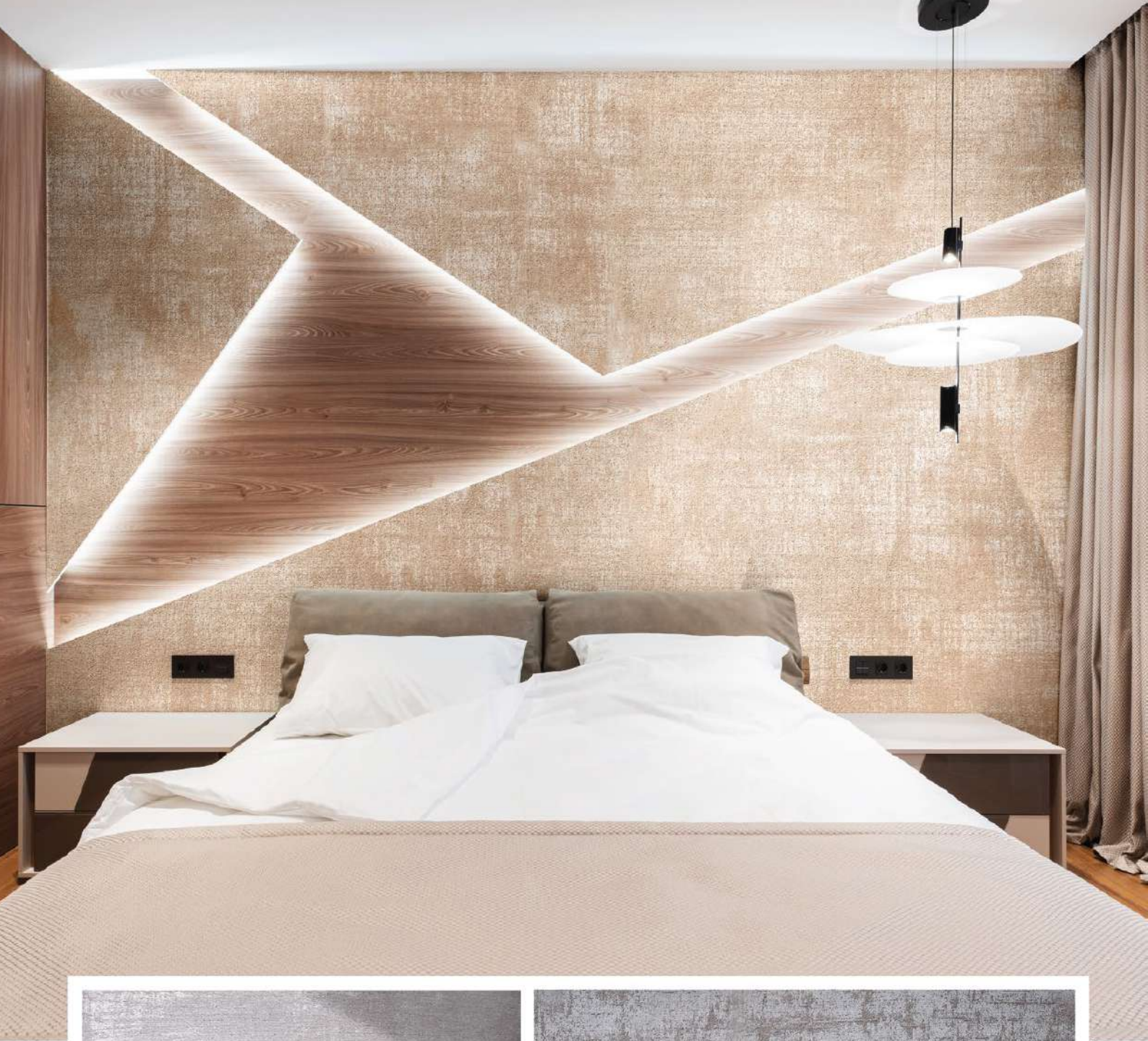


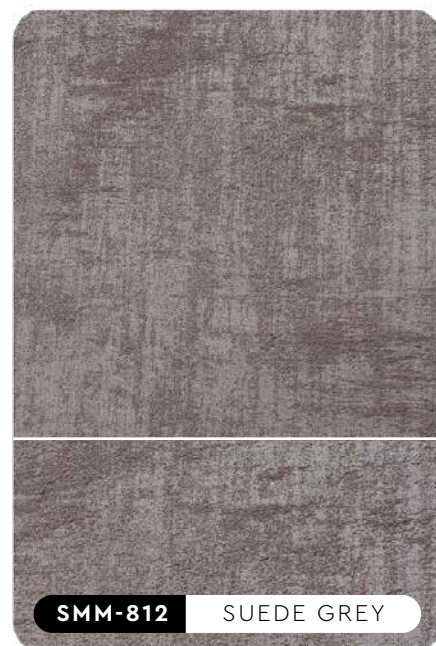
SMM-801 CRYSTAL WHITE



SMM-802 VANILLA WHITE

All color shown are as close to the actual SUZUKA[®] Strato[®] colors as modern printing techniques permit. Color appearance/finishing may vary according to amount of coats, style of strokes applied and individual painting methods.





APPLICATION TECHNIQUE



APPLICATION VIDEO

Preparation: - Cover the edges of surface that won't be painted by masking it with tape, paper or plastic.
- Clean up the wall surface to ensure it is free from dirt and dust.

STEP 1: PRIMER



Roll 2 layers of primer on the entire surface.

STEP 2: SANDING



Sand surface with sandpaper (600 grit) to ensure a smooth surface.

STEP 3: TEXTURE COAT

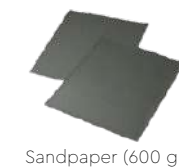
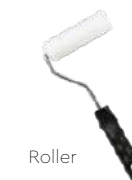


First, brush texture coat horizontally on the surface.



Next, brush texture coat vertically on the surface.

TOOLS:



PACKING DATA

1 L	Primer
1 L	Texture Coat

Coverage (per set)

WALL	3 - 4 m ² /l
CEILING	2.5 - 3.5 m ² /l



Strato[®] METALLICS ORGANZA

"A *smooth textured pattern* with *rich and creamy metallic finish* that is suitable for all interior designs."



PRODUCT FEATURES



Low VOC
& Odor



Green Choice, Water
Based & Eco-friendly



Applicable
on Ceiling



Easy to
Touch Up



Formaldehyde
& Lead Free



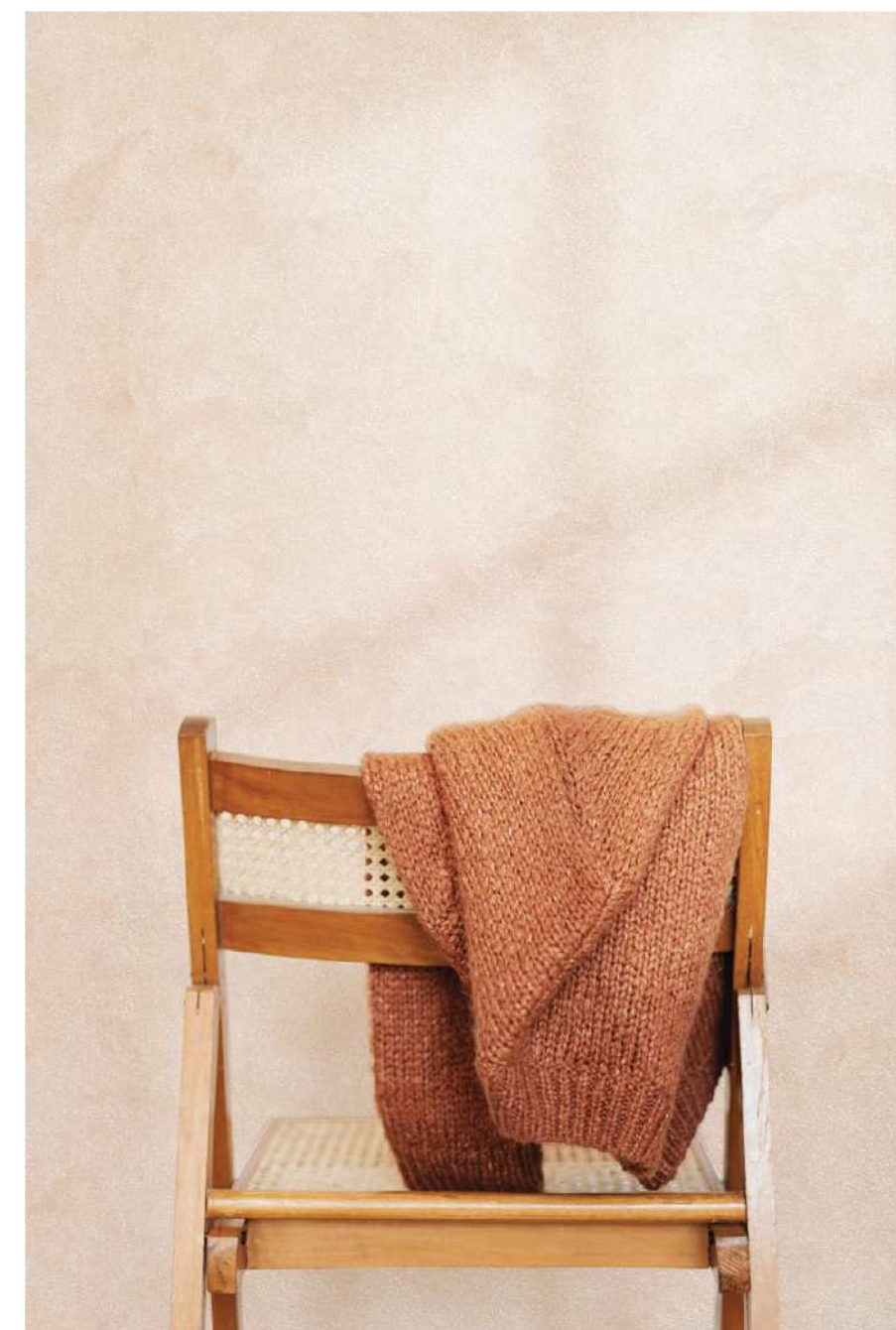
Easy Application
& DIY Friendly



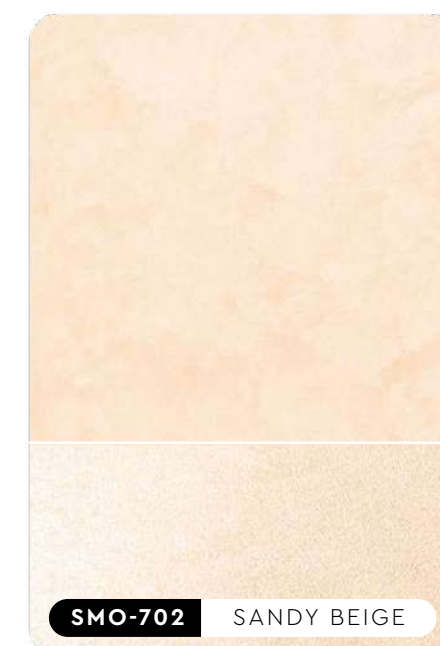
Easy
Maintenance



Metallic
Finish

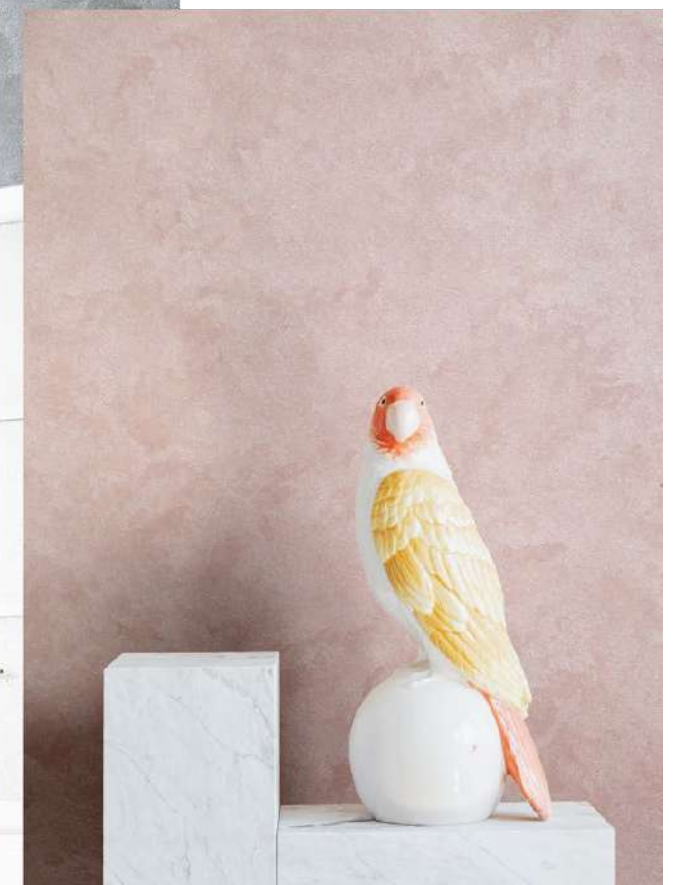
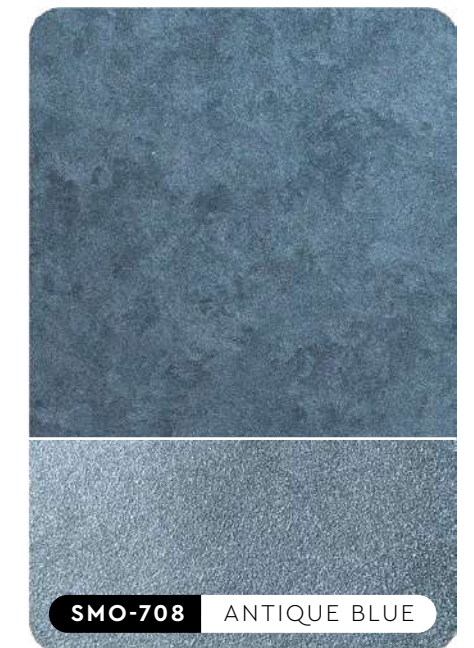


SMO-701 FLORAL BEIGE



SMO-702 SANDY BEIGE

All color shown are as close to the actual SUZUKA[®] Strato[®] colors as modern printing techniques permit. Color appearance/finishing may vary according to amount of coats, style of strokes applied and individual painting methods.



IMPORTANT NOTE

All color shown are as close to the actual SUZUKA® Strato® colors as modern printing techniques permit, nonetheless, there are still color/tone differences.

We highly recommend seeing actual samples before ordering.



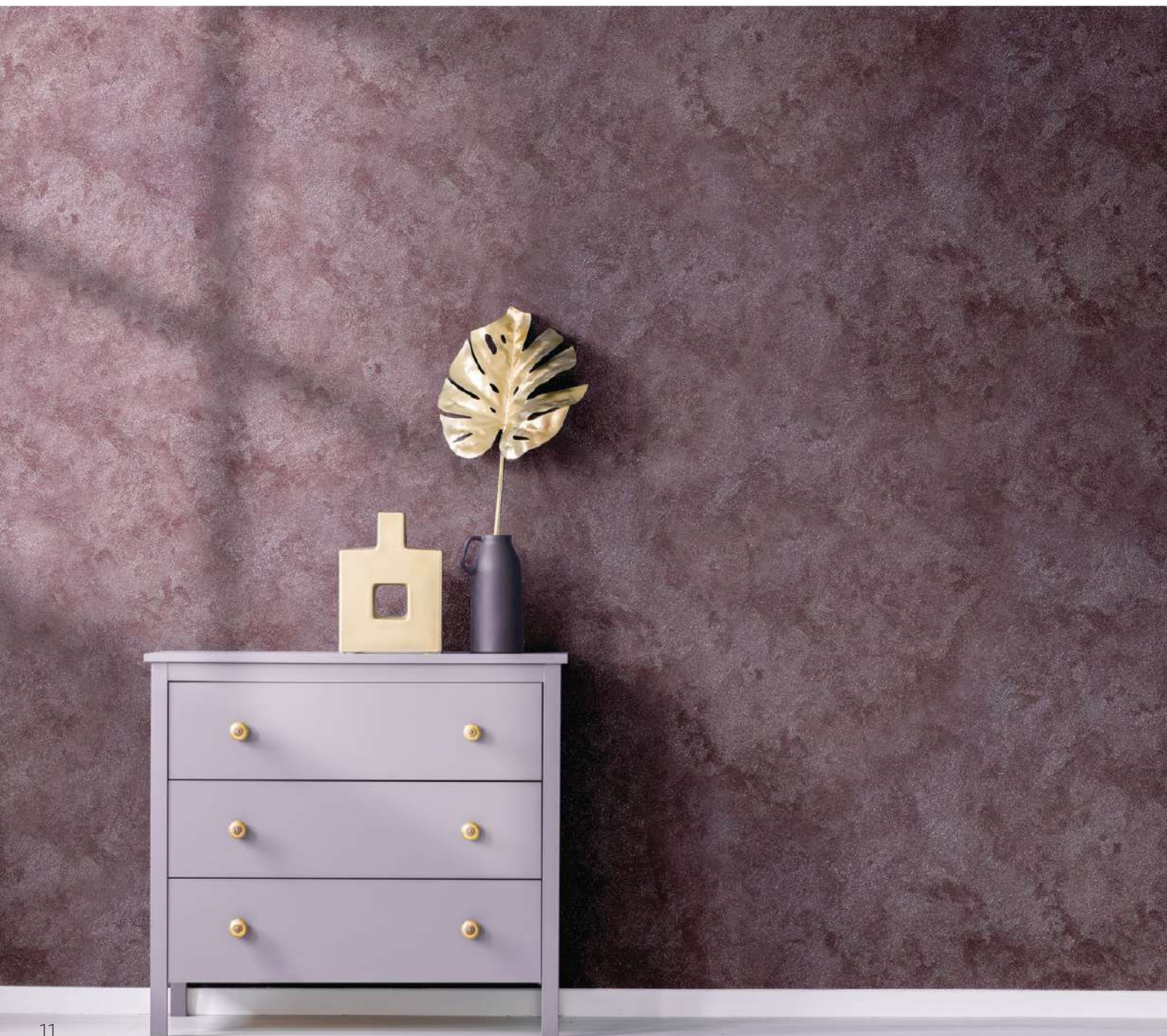
SMO-709 LAVA GREY



SMO-710 PLUM VIOLET



SMO-711 DARK AMBER



SMO-712 ANTIQUE WOOD



SMO-713 PALE MUSTARD



SMO-714 OLIVE GARDEN

All color shown are as close to the actual SUZUKA® Strato® colors as modern printing techniques permit. Color appearance/finishing may vary according to amount of coats, style of strokes applied and individual painting methods.



APPLICATION TECHNIQUE



APPLICATION VIDEO

Preparation: - Cover the edges of surface that won't be painted by masking it with tape, paper or plastic.
- Clean up the wall surface to ensure it is free from dirt and dust.



Roll a layer of primer on the entire surface.



Sand surface with sandpaper (600 grit) to ensure a smooth surface.



Scrape texture coat evenly on the surface. Next, use a piccolo tool to create texture effects by moving with random motion.

Repeat steps for a second layer of texture coat. Scrape texture coat on the surface and use piccolo tool to create texture by moving with random motion.



Scrape texture coat evenly on the surface.

Scrape texture coat randomly on the surface to create texture.

TOOLS:



Roller



Sandpaper (600 grit)



Trowel



Piccolo Tool (Optional)

PACKING DATA



1 L	Primer
1 L	Texture Coat

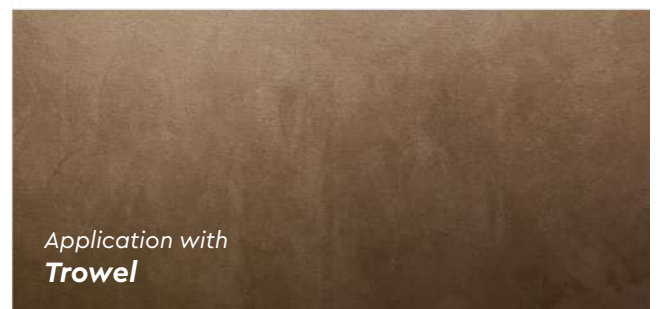
* Piccolo tool is sold separately

Coverage (per set)

WALL	6 - 7 m ² /l
CEILING	5 - 6 m ² /l



Application with Piccolo Tool



Application with Trowel