

Crap & Win!
iPad Pro
 Check out our contest!
 suzuka.com.my/promotion | T&C Apply



STRATO[®]

Matte & smooth

EDITION
01

WALL FINISH PROFESSIONALS

STRATO[®]
 CEMENT TEXTURE
 & VELOURS

INTERIOR
 TEXTURED PAINTS

Complies to the
 American California
 Proposition 65 Standard

WALL FINISH
 PROFESSIONALS.

SINCE
 1977



BRICK & STONE VENEER • TEXTURED PAINT • KASTPANEL • ECES • TEXTURE COATING • PEBBLE STONE COATING



suzuka.com.my

[suzuka.group](https://www.facebook.com/suzuka.group) | Hotline : +6012-258 7388

* Photos of the products shown in this catalogue may vary in color due to lighting condition & printing. We suggest you examine actual product samples before ordering.



MATTE & SMOOTH-E1-2310

STRATO®

Matte & smooth

1

STRATO® CEMENT TEXTURE

Page 3 - 12

2

STRATO® VELOURS

Page 13 - 26



SUZUKA® WALL SEALER PRO

“ Make your
wall finishes
last longer! ”



Packing Size: **1L** **5L** **20L**

Superior primer for concrete, skimmed or masonry surfaces.

This sealer that has good substrate penetration abilities to increase adhesion of product to prevent chalking or peeling off.

It has excellent alkaline resistance properties that can prevent efflorescence. It is an ideal base coat for any SUZUKA® or any wall finish products.

Coverage	Drying Time (hour)	
6.5 - 8.5 m ² /l/coat	Surface Dry : 1	Substrate Temperature:
	Hard Dry : 5	23°C - 26°C
	Recoating : 5	

Features:

- Excellent alkaline resistance to prevent efflorescence.
- Good for new walls and repainting.
- Prevents skim coat from chalking & peeling off.
- Extremely good penetration.
- Excellent adhesion.
- Exterior and interior use.
- Applicable with brush, roller or spray gun.

Suitable for:

- Masonry wall
- Brickwork
- Plaster
- Skimmed Coat
- Asbestos free substrate

Airless Spray

Nozzle	Spray Angle Degree	Pressure
1.8 - 2.0 mm	65° - 80°	210 psi/150kg/cm ²

Create two different patterns with
SCT or SVL using different tools and techniques!



Trowel Pattern

Application
with trowel.



Piccolo Pattern

Application
with piccolo tool.

STRATO[®] Cement TEXTURE

SCT



SCT 301 - 310

Create everlasting look with Strato[®] Cement Texture. Whether you are going for the industrial, scandinavian, contemporary or minimalistic style, the backdrop of the cement texture can complete the look.

Create two different patterns with Strato[®] Cement Texture using different tools and techniques!

Appearance

Low Sheen	● ● ● ● ●	High Sheen
Smooth Texture	● ● ● ● ●	Rough Texture
Matte	● ● ● ● ●	Metallic

Features



Low VOC & Odor



Green Choice, Water Based & Eco-friendly



Formaldehyde & Lead Free



Crack Resistant



Anti-chalking & Efflorescence



Easy Application & DIY Friendly



Applicable on Ceiling



Easy to Touch Up



Easy Maintenance



Matte Finishing

- Interior use only
- Complies to the American California Proposition 65 Standard

SCT
Trowel Pattern

Matte & Smooth
 Finishing.



SCT-301 Silver Grey



SCT-302 Natural Grey



SCT-303 Shark Grey



SCT-304 Granite Grey



SCT-305 Iron Grey



SCT-306 Charcoal Grey



SCT-307 Metal Grey



SCT-308 Shadow Grey



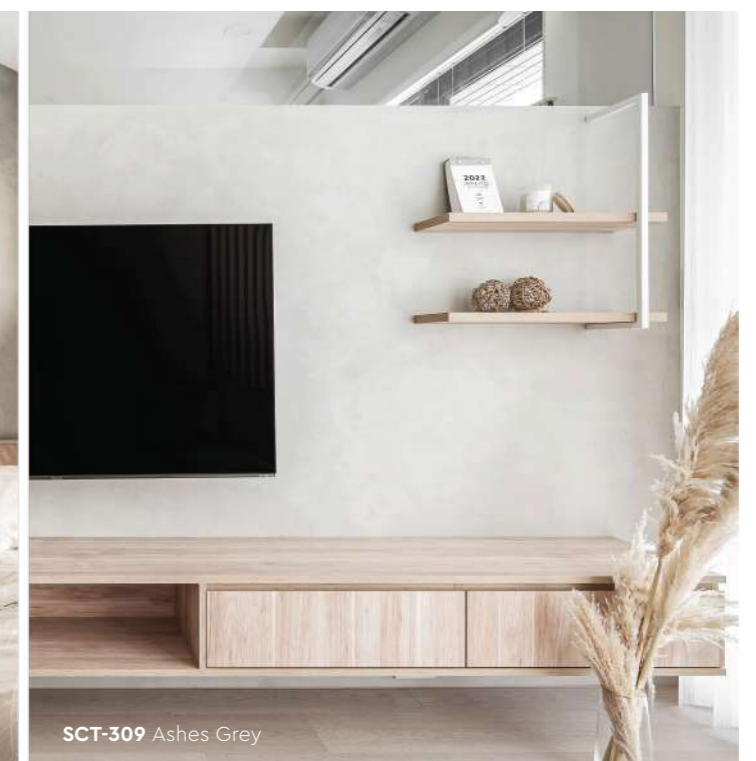
SCT-309 Ashes Grey

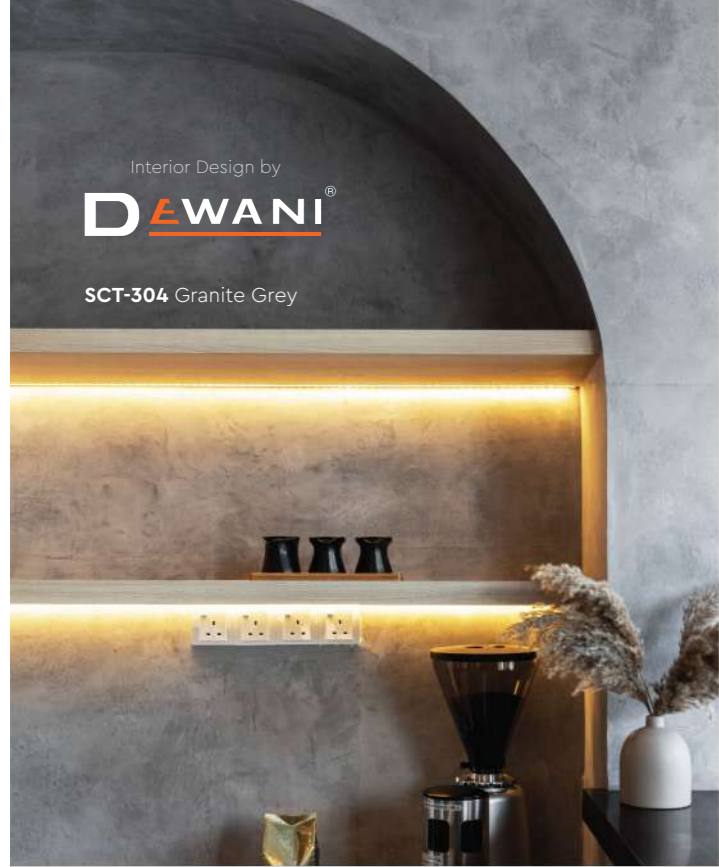


SCT-310 Misty Grey

All color shown are as close to the actual Suzuka® Strato® colors as modern printing techniques permit, nonetheless, there are still color/tone differences.

We highly recommend seeing actual samples before ordering.





Interior Design by
D EWANI[®]

SCT-304 Granite Grey



SCT-301 Silver Grey



Trowel Pattern

Application Technique

Application Video



Preparation:

- Cover the edges of surface that won't be painted by masking it with tape, paper or plastic.
- Clean up the wall surface to ensure it is free from dirt and dust.



1 Primer

Roll 2 layers of primer on the entire surface. Allow 30 minutes to dry between the layers. (The primer can be diluted with maximum 5% of clean water)

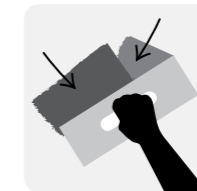
Tool: Roller



2 Sanding

Sand the entire surface in circular motion to ensure the surface is smooth.

Tool: 600 Grit Sand Paper



3 Texture Coat

Scrape texture coat randomly to create pattern. Ensure the whole surface area is covered. Then apply second layer.

(use a larger trowel for a larger pattern, a smaller trowel for smaller pattern)

Tool: Stainless Steel Trowel



4 Sanding (Optional)

Sand the entire surface in circular motion to enhance the pattern.

Tool: 600 Grit Sand Paper



5 Topcoat

Apply SR-Top 1 on entire surface using a dry sponge in circular motions.

IMPORTANT: Use a clean and dry sponge/cleaning cloth to wipe the excess topcoat before it dries to avoid the sponge marks.

Tool: Sponge / Cleaning Cloth

IMPORTANT:

Color may vary on application technique & amount of material used.



Packing Data

1 L	Primer
1 L	Texture Coat
0.5 L	Topcoat (SR-Top 1)

Coverage (per set)

WALL	6 - 7 sqm
CEILING	5 - 6 sqm



Tools: Trowel/Scraper, Roller, Sand Paper (600 Grit), Sponge & Cleaning Cloth

SCT
**Piccolo
 Pattern**

Matte & Smooth
 Finishing.



SCT-301 Silver Grey



SCT-302 Natural Grey



SCT-303 Shark Grey



SCT-304 Granite Grey



SCT-305 Iron Grey



SCT-306 Charcoal Grey



SCT-307 Metal Grey



SCT-308 Shadow Grey



SCT-309 Ashes Grey



SCT-310 Misty Grey

All color shown are as close to the actual Suzuka® Strato® colors as modern printing techniques permit, nonetheless, there are still color/tone differences.

We highly recommend seeing actual samples before ordering.



SCT-302 Natural Grey



SCT-306 Charcoal Grey



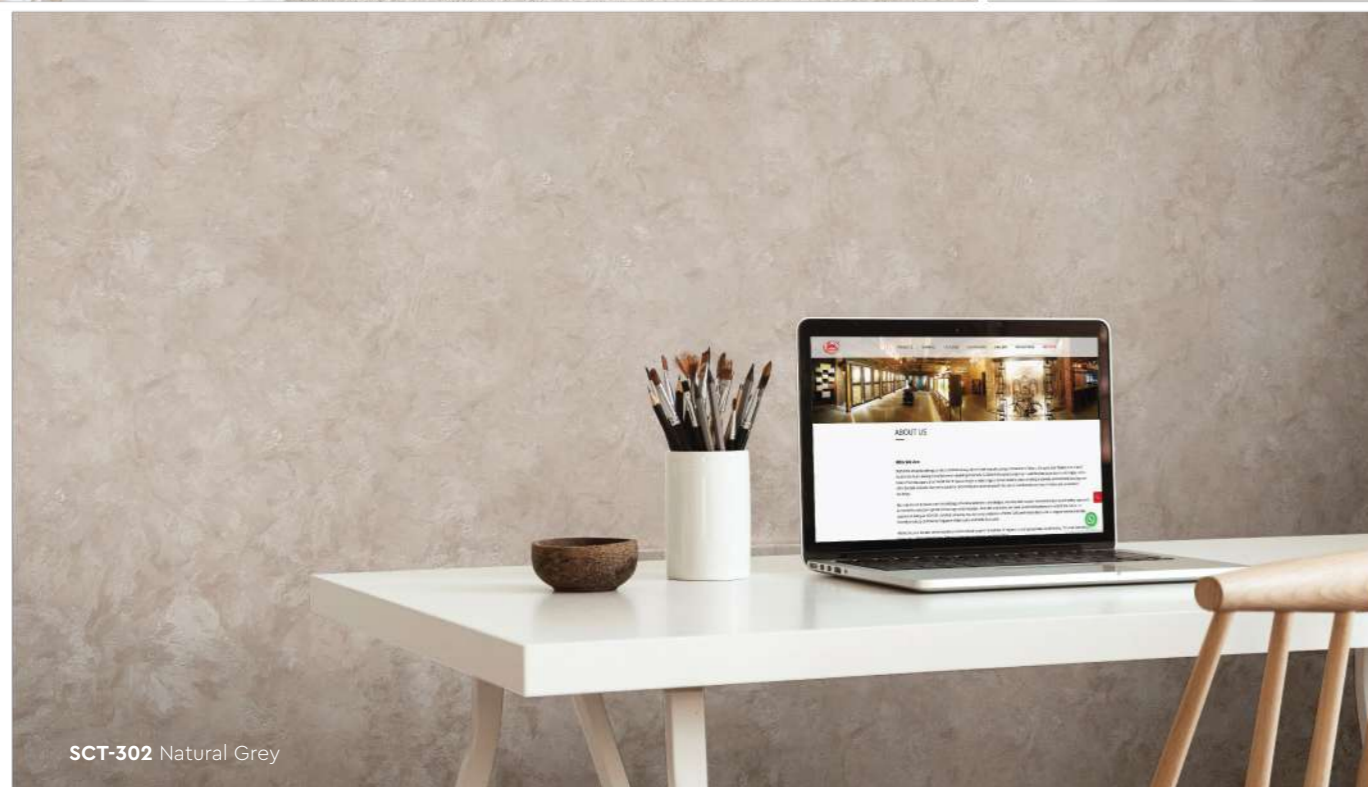
SCT-301 Silver Grey



SCT-309 Ashes Grey



SCT-304 Granite Grey



SCT-302 Natural Grey

Piccolo Pattern

Application Technique

Application Video



Preparation:

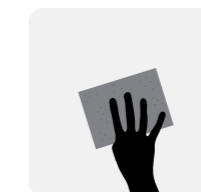
- Cover the edges of surface that won't be painted by masking it with tape, paper or plastic.
- Clean up the wall surface to ensure it is free from dirt and dust.



1 Primer

Roll 2 layers of primer on the entire surface. Allow 30 minutes to dry between the layers. (The primer can be diluted with maximum 5% of clean water)

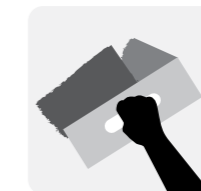
Tool: Roller



2 Sanding

Sand the entire surface in circular motion to ensure the surface is smooth.

Tool: 600 Grit Sand Paper



3 Texture Coat

Step A : Trowel

Scrape texture coat evenly onto the surface.

Tool: Stainless Steel Trowel



Step B : Piccolo

Use piccolo tool to create swirl texture effects by moving with random circular motion.

Tool: Piccolo Tool



4 Topcoat

Apply SR-Top 1 on entire surface using a dry sponge in circular motions.

IMPORTANT: Use a clean and dry sponge/cleaning cloth to wipe the excess topcoat before it dries to avoid the sponge marks.

Tool: Sponge / Cleaning Cloth

IMPORTANT:

Color may vary on application technique & amount of material used.



Packing Data

1 L	Primer
1 L	Texture Coat
0.5 L	Topcoat (SR-Top 1)

Coverage (per set)

WALL	6 - 7 sqm
CEILING	5 - 6 sqm



Tools: Trowel, Piccolo, Roller, Sand Paper (600 Grit), Sponge & Cleaning Cloth

STRATO® Velours



SVL



SVL 401 - 425

Rich velvety layers of color to enhance the interior space. Each color brings out a different mood and ambience, find a color that matches your personality

Create two different patterns with Strato® Velours using different tools and techniques!

Appearance

Low Sheen		High Sheen
Smooth Texture		Rough Texture
Matte		Metallic

Features



Low VOC & Odor



Green Choice, Water Based & Eco-friendly



Formaldehyde & Lead Free



Crack Resistant



Anti-chalking & Efflorescence



Easy Application & DIY Friendly



Applicable on Ceiling



Easy to Touch Up



Easy Maintenance



Matte Finishing

- Interior use only
- Complies to the American California Proposition 65 Standard

SVL
Trowel Pattern

Matte & Smooth
 Finishing.



SVL-401 Cloudy Grey



SVL-402 Mushroom Beige



SVL-403 Hazel Wood



SVL-404 Summer Sahara



SVL-405 Walnut Leather



SVL-406 Brocade Blue



SVL-407 Deep Marine



SVL-408 Royal Denim



SVL-409 Violet Memory



SVL-410 Rosy Mauve

All color shown are as close to the actual Suzuka® Strato® colors as modern printing techniques permit, nonetheless, there are still color/tone differences.

We highly recommend seeing actual samples before ordering.



SVL-406 Brocade Blue



SVL-401 Cloudy Grey



SVL-404 Summer Sahara



SVL-410 Rosy Mauve



SVL-417 Vanilla Cream



SVL-417 Vanilla Cream



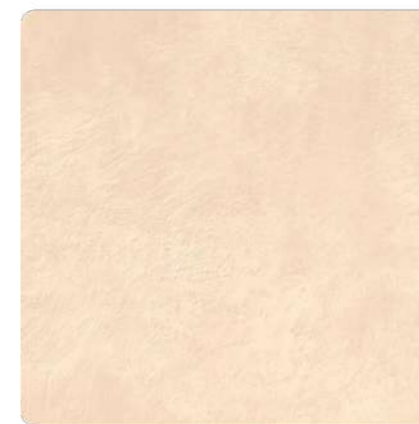
SVL-414 Herbal Garden



SVL-415 Lime Mist



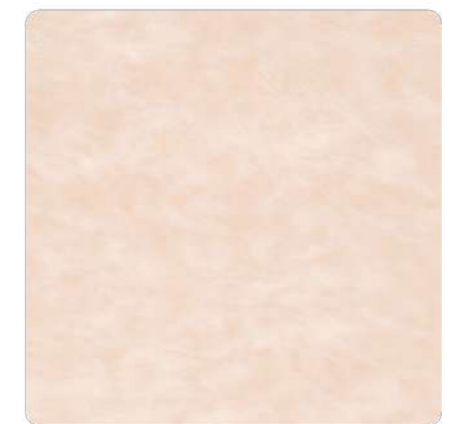
SVL-416 Flamingo Blush



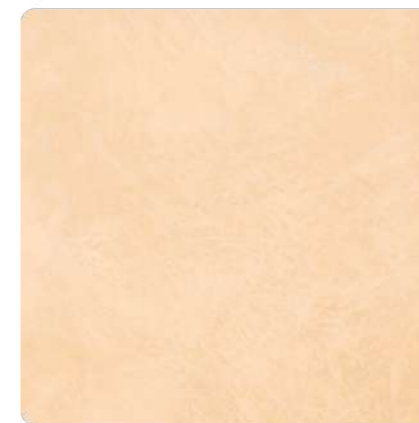
SVL-417 Vanilla Cream



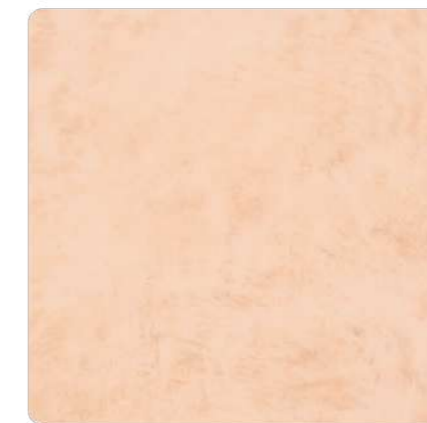
SVL-418 Oat Beige



SVL-419 Blush Cream



SVL-420 Wheat Beige



SVL-421 Light Apricot



SVL-422 Coral Peach



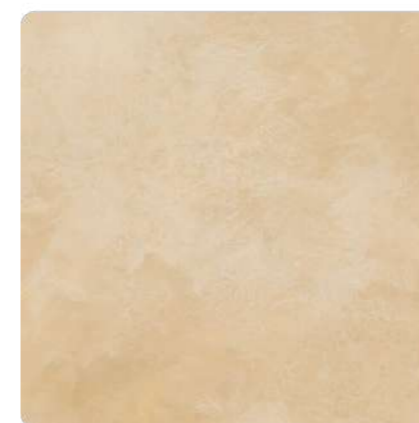
SVL-411 Frosted Mint



SVL-412 Vivid Emerald



SVL-413 Hunter Green



SVL-423 Lime Citrus



SVL-424 Dried Basil



SVL-425 Mauve Chalk



SVL-403 Hunter Green



SVL-425 Mauve Chalk



SVL-408 Royal Denim



SVL-408 Royal Denim



Packing Data

1 L	Primer
1 L	Texture Coat
0.5 L	Topcoat (SR-Top 1)

Coverage (per set)

WALL	6 - 7 sqm
CEILING	5 - 6 sqm

Trowel Pattern Application Technique

Application Video



Preparation:

- Cover the edges of surface that won't be painted by masking it with tape, paper or plastic.
- Clean up the wall surface to ensure it is free from dirt and dust.



1 Primer

Roll 2 layers of primer on the entire surface. Allow 30 minutes to dry between the layers. (The primer can be diluted with maximum 5% of clean water)

Tool: Roller



2 Sanding

Sand the entire surface in circular motion to ensure the surface is smooth.

Tool: 600 Grit Sand Paper



3 Texture Coat

Scrape texture coat randomly to create pattern. Ensure the whole surface area is covered. Then apply second layer.

(use a larger trowel for a larger pattern, a smaller trowel for smaller pattern)

Tool: Stainless Steel Trowel



4 Sanding (Optional)

Sand the entire surface in circular motion to enhance the pattern.

Tool: 600 Grit Sand Paper



5 Topcoat

Apply SR-Top 1 on entire surface using a dry sponge in circular motions.

IMPORTANT: Use a clean and dry sponge/cleaning cloth to wipe the excess topcoat before it dries to avoid the sponge marks.

Tool: Sponge / Cleaning Cloth

IMPORTANT:

Color may vary on application technique & amount of material used.



Tools: Trowel/Scraper, Roller, Sand Paper (600 Grit), Sponge & Cleaning Cloth

SVL
**Piccolo
 Pattern**

Matte & Smooth
 Finishing.



SVL-401 Cloudy Grey



SVL-402 Mushroom Beige



SVL-403 Hazel Wood



SVL-404 Summer Sahara



SVL-405 Walnut Leather



SVL-406 Brocade Blue



SVL-407 Deep Marine



SVL-408 Royal Denim



SVL-409 Violet Memory



SVL-410 Rosy Mauve

All color shown are as close to the actual Suzuka® Strato® colors as modern printing techniques permit, nonetheless, there are still color/tone differences.

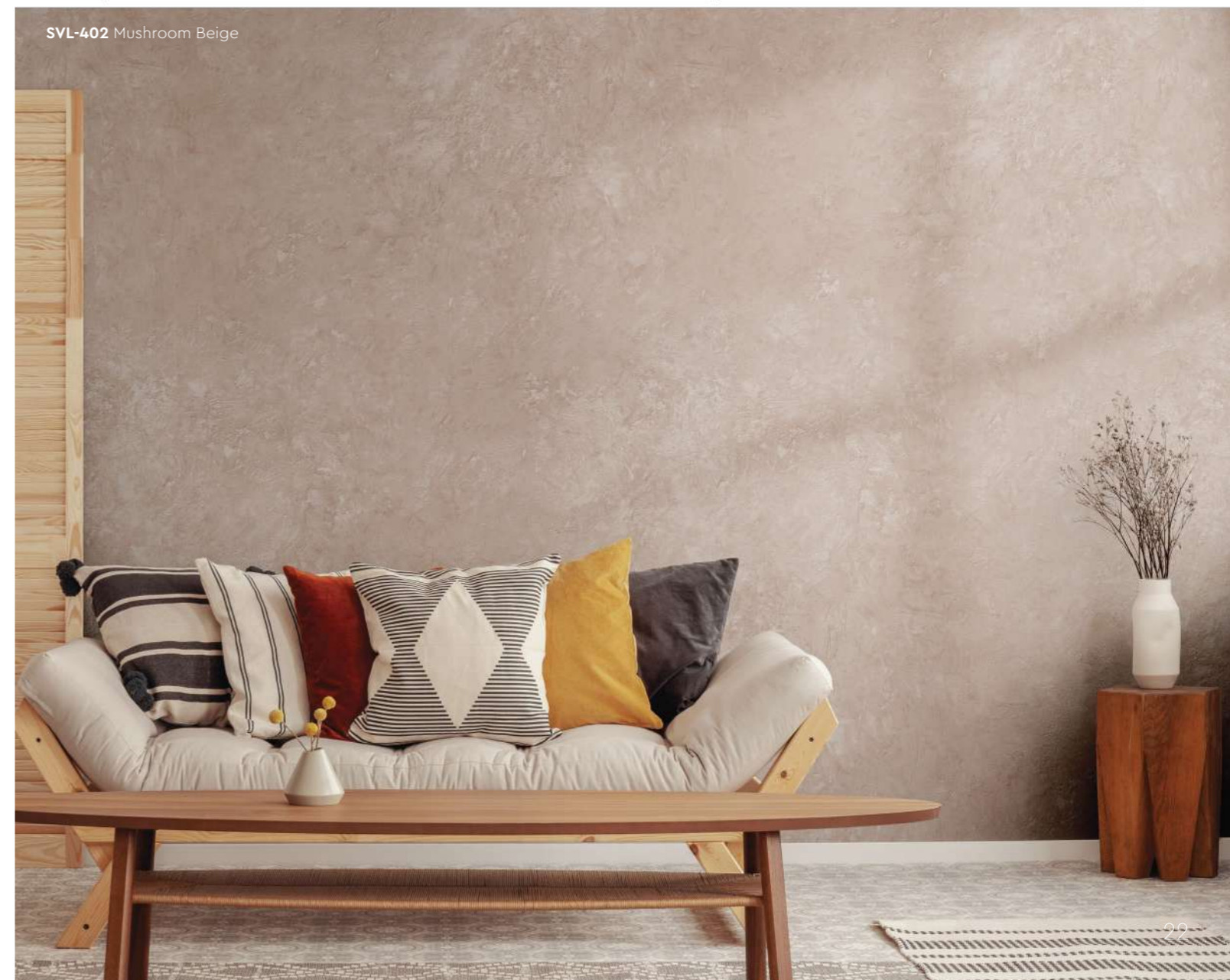
We highly recommend seeing actual samples before ordering.



SVL-401 Cloudy Grey



SVL-406 Brocade Blue



SVL-402 Mushroom Beige



SVL-414 Herbal Garden



SVL-414 Herbal Garden



SVL-415 Lime Mist



SVL-416 Flamingo Blush



SVL-417 Vanilla Cream



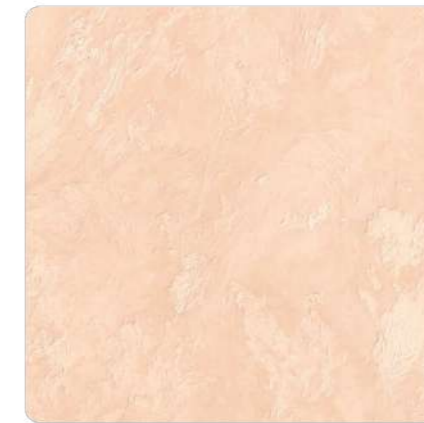
SVL-418 Oat Beige



SVL-419 Blush Cream



SVL-420 Wheat Beige



SVL-421 Light Apricot



SVL-422 Coral Peach



SVL-411 Frosted Mint



SVL-412 Vivid Emerald



SVL-413 Hunter Green



SVL-423 Lime Citrus



SVL-424 Dried Basil



SVL-425 Mauve Chalk



SVL-420 Wheat Beige



SVL-425 Mauve Chalk



SVL-422 Coral Peach

Piccolo Pattern

Application Technique

Application Video



Preparation:

- Cover the edges of surface that won't be painted by masking it with tape, paper or plastic.
- Clean up the wall surface to ensure it is free from dirt and dust.



1 Primer

Roll 2 layers of primer on the entire surface. Allow 30 minutes to dry between the layers. (The primer can be diluted with maximum 5% of clean water)

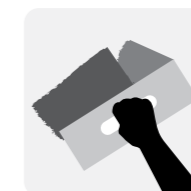
Tool: Roller



2 Sanding

Sand the entire surface in circular motion to ensure the surface is smooth.

Tool: 600 Grit Sand Paper



3 Texture Coat

Step A : Trowel

Scrape texture coat evenly onto the surface.

Tool: Stainless Steel Trowel



Step B : Piccolo

Use piccolo tool to create swirl texture effects by moving with random circular motion.

Tool: Piccolo Tool



4 Topcoat

Apply SR-Top 1 on entire surface using a dry sponge in circular motions.

IMPORTANT: Use a clean and dry sponge/cleaning cloth to wipe the excess topcoat before it dries to avoid the sponge marks.

Tool: Sponge / Cleaning Cloth

IMPORTANT:

Color may vary on application technique & amount of material used.



Packing Data

1 L	Primer
1 L	Texture Coat
0.5 L	Topcoat (SR-Top 1)

Coverage (per set)

WALL	6 - 7 sqm
CEILING	5 - 6 sqm



Tools: Trowel, Piccolo, Roller, Sand Paper (600 Grit), Sponge & Cleaning Cloth

Crap & Win!
iPad Pro
 Check out our contest!
 suzuka.com.my/promotion | T&C Apply



STRATO®

Cashmere & Taffeta

INTERIOR
 TEXTURED PAINTS

EDITION
01

WALL FINISH PROFESSIONALS

TAIWAN • MALAYSIA • THAILAND



BRICK & STONE VENEER • TEXTURED PAINT • KASTPANEL • ECES • TEXTURE COATING • PEBBLE STONE COATING

WALL FINISH
 PROFESSIONALS.

SINCE
 1977



suzuka.com.my

[suzuka.group](https://www.facebook.com/suzuka.group) | Hotline : +6012-258 7388

* Photos of the products shown in this catalogue may vary in color due to lighting condition & printing. We suggest you examine actual product samples before ordering.



CASHMERE & TAFFETA-E1-2311

SUZUKA® WALL SEALER PRO

“ Make your
wall finishes
last longer! ”



Packing Size: **1L** **5L** **20L**

Superior primer for concrete, skimmed or masonry surfaces.

This sealer that has good substrate penetration abilities to increase adhesion of product to prevent chalking or peeling off.

It has excellent alkaline resistance properties that can prevent efflorescence. It is an ideal base coat for any SUZUKA® or any wall finish products.

Coverage

6.5 - 8.5
m²/l/coat

Drying Time (hour)

Surface Dry : 1	Substrate Temperature:
Hard Dry : 5	23°C - 26°C
Recoating : 5	

Features:

- Excellent alkaline resistance to prevent efflorescence.
- Good for new walls and repainting.
- Prevents skim coat from chalking & peeling off.
- Extremely good penetration.
- Excellent adhesion.
- Exterior and interior use.
- Applicable with brush, roller or spray gun.

Suitable for:

- Masonry wall
- Brickwork
- Plaster
- Skimmed Coat
- Asbestos free substrate

Airless Spray

Nozzle	Spray Angle Degree	Pressure
1.8 - 2.0 mm	65° - 80°	210 psi/150kg/cm²

STRATO® Cashmere



*Sandy &
Slight
Metallic*
FINISHING

Strato® Cashmere embodies the pinnacle of elegance in textured coating. Achieved through smooth layering and delicate craftsmanship, the finished product gives a refined and royal appearance with a lingering hint of sophistication.

Features

Low VOC & Odor



Formaldehyde & Lead Free



Green Choice, Water Based & Eco-friendly



Easy, Quick Application & DIY Friendly



Easy Maintenance



• **INTERIOR USE ONLY**



SCH-003

SILVER SLATE



SCH-016

STARDUST SILVER

Interior Design by
METRICS
GLOBAL



SCH-008

EGGSHELL BEIGE



Pearl White | **SCH-001**



Silver Mist | **SCH-002**



Silver Slate | **SCH-003**



Platinum Metal | **SCH-004**



Bronze Age | **SCH-005**



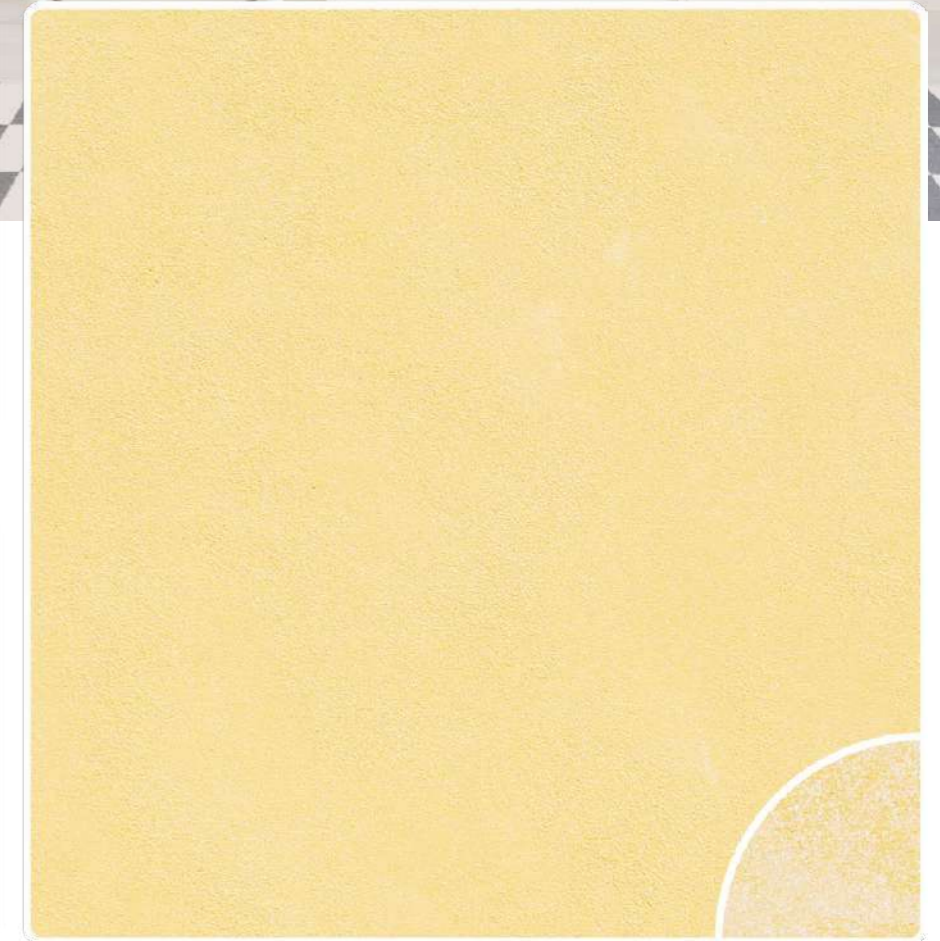
Sand Castle Beige | **SCH-006**



Autumn Beige | **SCH-007**



Eggshell Beige | **SCH-008**



Desert Gold | **SCH-009**

SCH-015

POWDER
BLUE



Baby Doll Pink | **SCH-013**



Coral Blush | **SCH-014**



Powder Blue | **SCH-015**



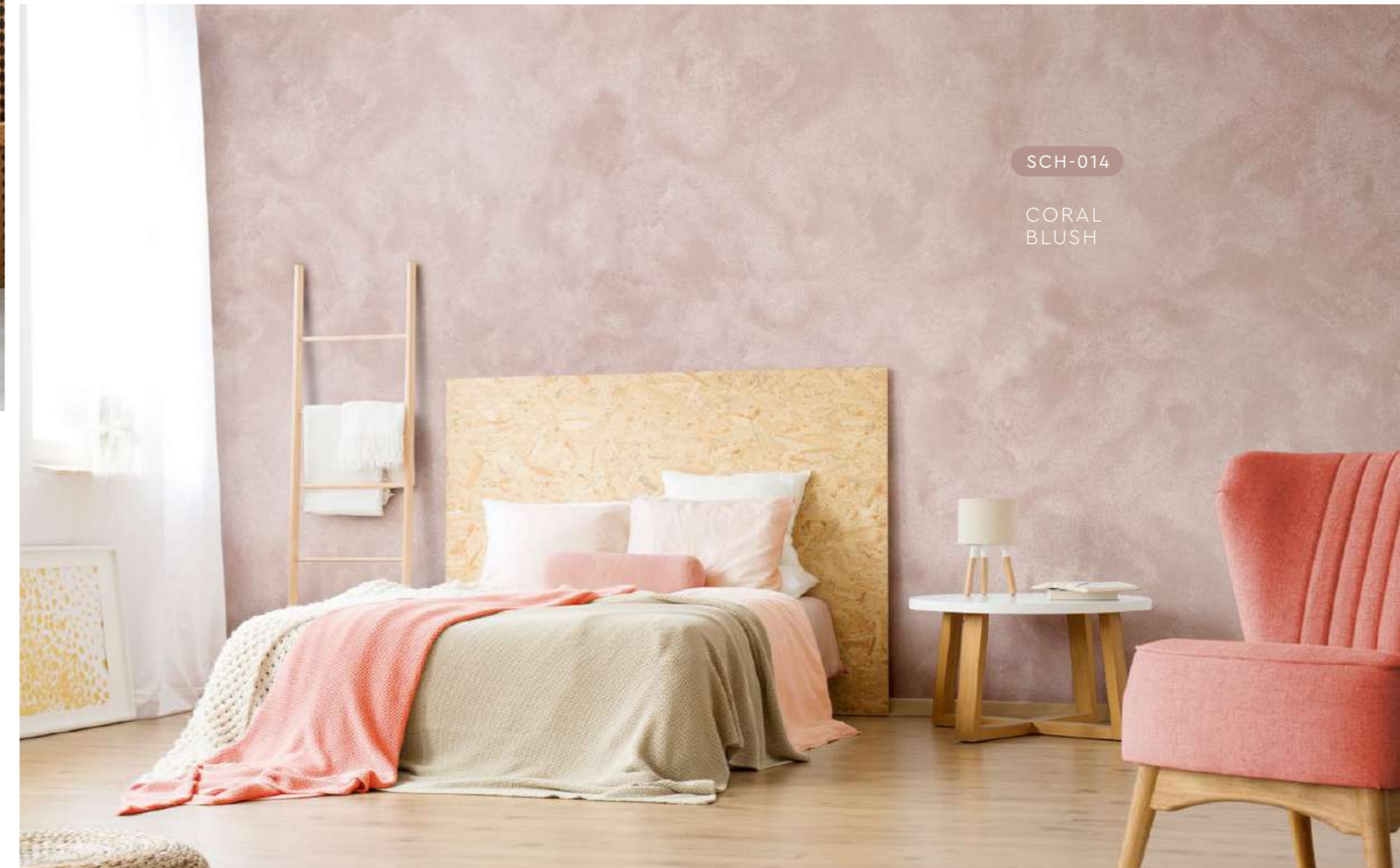
Honey Yellow | **SCH-010**



Peach Blossom | **SCH-011**



Plum Sunset | **SCH-012**



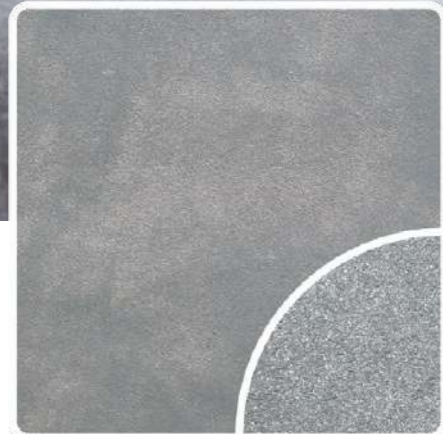
SCH-014

CORAL
BLUSH

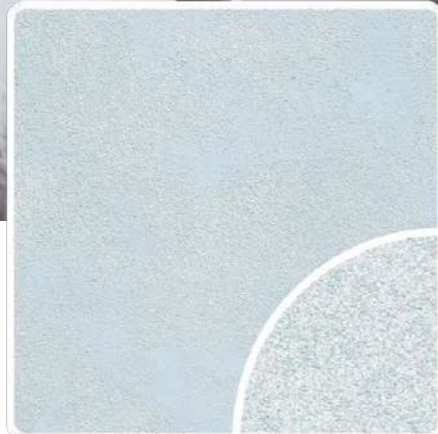


SCH-019

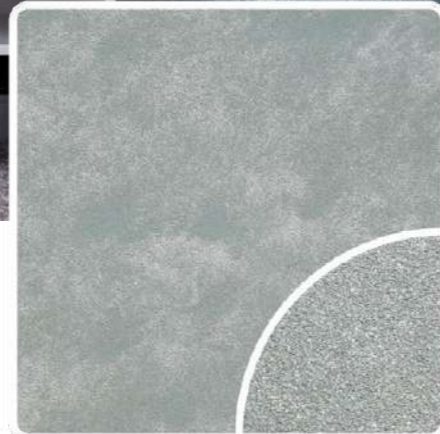
PEACOCK
BLUE



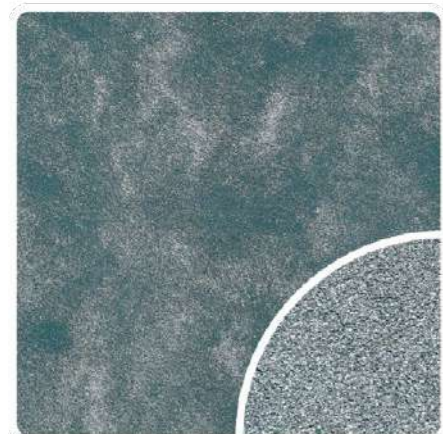
Stardust Silver | SCH-016



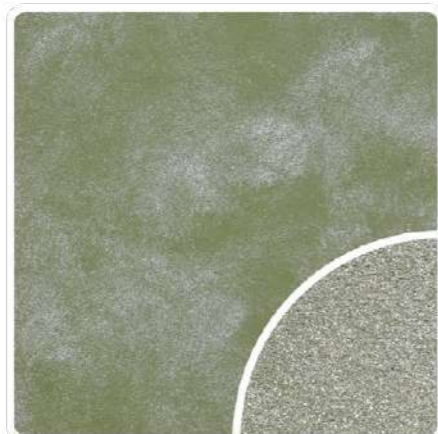
Lace Blue | SCH-017



Ash Grey | SCH-018



Peacock Blue | SCH-019



Olive Tree | SCH-020



Tropical Green | SCH-021

APPLICATION TECHNIQUE



APPLICATION VIDEO

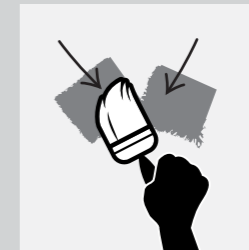
Preparation: - Cover the edges of surface that won't be painted by masking it with tape, paper or plastic.
- Clean up the wall surface to ensure it is free from dirt and dust.



1 PRIMER

Roll 2 layers of primer on the entire surface.
Allow 30 minutes to dry between the layers.
(The primer can be diluted with maximum 5% of clean water)

Tool: Roller



2 TEXTURE COAT

Brush on texture coat in criss cross patterns. Apply 1-2 layers. Ensure the whole surface area is covered.

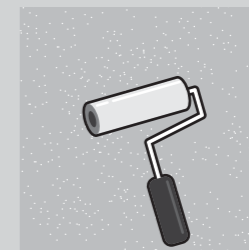
Tool: Brush



3 FLATTENING

Flatten the entire surface in circular motion to enhance the pattern.

Tool: Plastic Scrapper



4 TOPCOAT

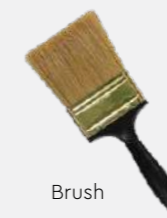
Evenly roll SR-Top 3 on entire surface. Allow to dry for 1 hour.

Tool: Roller

Tools:



Roller



Brush



Plastic Scrapper



PACKING DATA

1 L	Primer
1 L	Texture Coat
1 L	Topcoat (SR-Top 3)

Coverage (per set)	
WALL	6 - 7 sqm
CEILING	5 - 6 sqm

STRATO® Taffeta



Smooth &
Shimmering
FINISHING

A vibrant color layered in texture and dusted with a shimmering pearl effect crafts a bold and radiant feel onto the wall.

Features

Low VOC & Odor



Formaldehyde & Lead Free



Green Choice, Water Based & Eco-friendly



Easy, Quick Application & DIY Friendly



Easy Maintenance



• INTERIOR ONLY

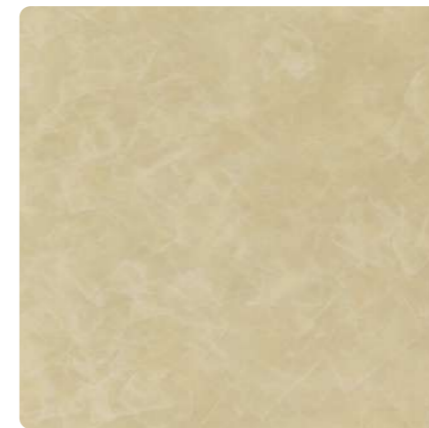


SRT-219

OYSTER
BEIGE



Light Sapphire | **SRT-214**



Oyster Beige | **SRT-219**



Blue Waves | **SRT-225**



SRT-201

PEWTER
GREY



SRT-214

LIGHT
SAPPHIRE



Pewter Grey | **SRT-201**



Light Steel Blue | **SRT-203**



Light Sepia | **SRT-209**



SRT-232

PALE
LAVENDER

APPLICATION TECHNIQUE



APPLICATION VIDEO

Preparation: - Cover the edges of surface that won't be painted by masking it with tape, paper or plastic.
- Clean up the wall surface to ensure it is free from dirt and dust.



1 PRIMER

Roll 2 layers of primer on the entire surface. Allow 30 minutes to dry between the layers.
(The primer can be diluted with maximum 5% of clean water)

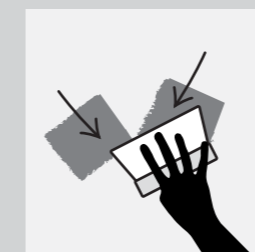
Tool: Roller



2 SANDING (OPTIONAL)

Sand the entire surface in circular motion to ensure the surface is smooth.

Tool: 600 Grit Sand Paper



3 TEXTURE COAT

Scrape texture coat in a random criss cross pattern. 2-3 layers. Every layer requires 30 minutes to dry.

Tool: Steel Scrapper



4 SANDING

Sand the entire surface in circular motion to enhance the pattern.

Tool: 600 Grit Sand Paper



5 TOPCOAT

Scrape on topcoat SR-Top 2 in a random criss cross overlapping patterns. Allow 1 hour to dry.

Tool: Steel Scrapper

✧✧ Taffeta has a **shimmering** pearl effect topcoat.
✧✧ For a **matte** finishing, please request **SR-Top 1**.

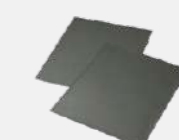
Tools:



Roller



Steel Scrapper



Sand Paper (600 Grit)



Malted Mocha | **SRT-231**



Pale Lavender | **SRT-232**



Ocean Surface | **SRT-233**

PACKING DATA

1 L	Primer
1 L	Texture Coat
0.5 L	Topcoat (SR-Top 2)

Coverage (per set)	
WALL	4.5 sqm
CEILING	3.5 sqm



Crap
& Win!
iPad Pro
Check out our contest!
suzuka.com.my/promotion | T&C Apply



Strato.
SATIN
INTERIOR TEXTURE PAINTS

WALL FINISH PROFESSIONALS
TAIWAN • MALAYSIA • THAILAND



BRICK & STONE VENEER • TEXTURED PAINT • KASTPANEL • ECES • TEXTURE COATING • PEBBLE STONE COATING



EDITION
1.3



suzuka.com.my
suzuka.group | Hotline : +6012-258 7388

* Photos of the products shown in this catalogue may vary in color due to lighting condition & printing. We suggest you examine actual product samples before ordering.



SATIN-E1.3-2309

Strato:
SATIN
INTERIOR TEXTURE PAINTS

The Strato® Satin collection highlights an array of soft-hued silky colours, creating a creamy and pearly finish for a sophisticated and refined look. Pick from a range of light to dark pastel tones to match any kind of environment, whether it's a bedroom, café, or office space.



STS-507

SLATE
GRAY

Strato:
SATIN



**"Soft-hued
Silky Colours"**

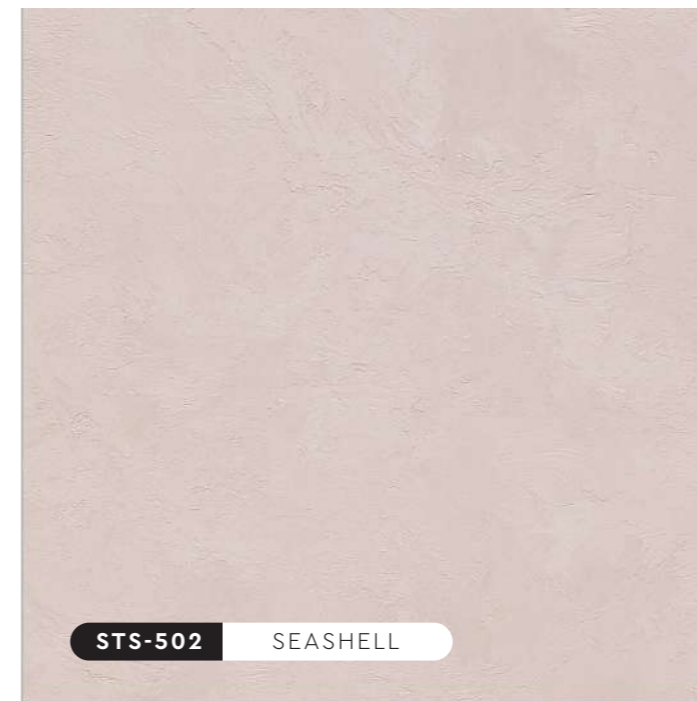
All color shown are as close to the actual SUZUKA® Strato® Satin colors as modern printing techniques permit, nonetheless, there are still color/tone differences.

We highly recommend seeing actual samples before ordering.

—
IMPORTANT NOTE



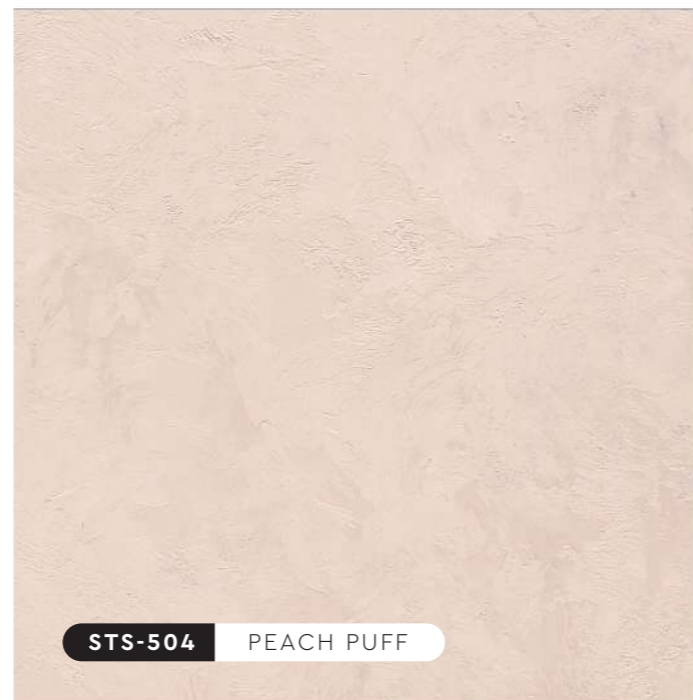
STS-501 FLORAL WHITE



STS-502 SEASHELL



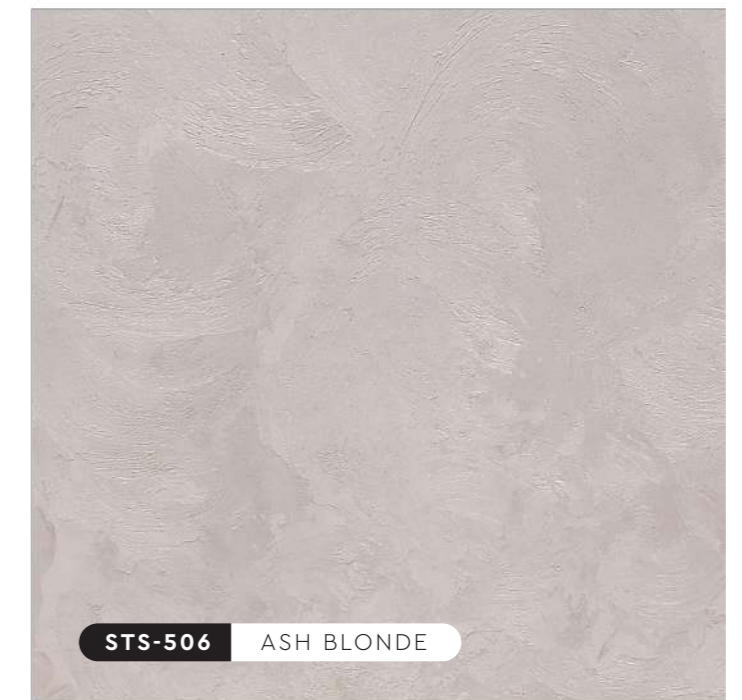
STS-503 MISTY ROSE



STS-504 PEACH PUFF



STS-505 MILKY LATTE



STS-506 ASH BLONDE



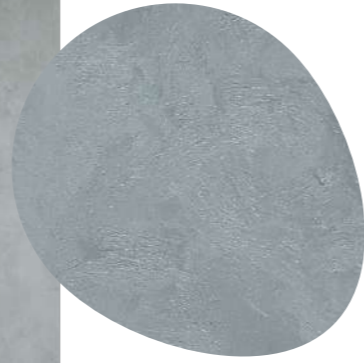
STS-507 SLATE GRAY



STS-508 PALE GREEN



STS-509 RUST



STS-508

PALE
GREEN



SLATE
GRAY

STS-507



STS-503

MISTY
ROSE



"Creamy & Pearly Finish"

for a sophisticated & refined look



STS-504

PEACH
PUFF



STS-509

RUST



MILKY
LATTE

STS-505



STS-502

SEASHELL

STS-508

PALE GREEN



PACKING DATA

1 L	Primer
1 L	Texture Coat
Coverage (per set)	6 - 7 sqm (WALL)
	5 - 6 sqm (CEILING)

* Piccolo tool is sold separately



PRODUCT FEATURES

- Low VOC & Odor
- Green Choice, Water Based & Eco-friendly
- Applicable on Ceiling
- Easy to Touch Up
- Formaldehyde & Lead Free
- Easy Application & DIY Friendly
- Easy Maintenance
- Satin Finish

APPLICATION TECHNIQUE

Preparation: - Cover the edges of surface that won't be painted by masking it with tape, paper or plastic.
 - Clean up the wall surface to ensure it is free from dirt and dust.



APPLICATION VIDEO

STEP 1 : PRIMER

Roll 2 layers of primer on the entire surface.

STEP 2 : SANDING

Sand surface with sandpaper (600 grit) to ensure a smooth surface.

STEP 3 : TEXTURE COAT

First, scrape texture coat evenly on the entire surface.

Next, use a piccolo tool to create swirl texture effects by moving with random circular motion.

TOOLS

- Roller
- Sandpaper (600 grit)
- Trowel
- Piccolo Tool

STS-501

FLORAL WHITE



WIN*
RM 1,000!

Join our photo contest now!
*T&C Apply More info: suzuka.com.my/promotion



**WALL FINISH
PROFESSIONALS**
TAIWAN • MALAYSIA • THAILAND

Strato.
METALLICS

INTERIOR TEXTURE PAINTS



BRICK & STONE VENEER • TEXTURE PAINT • KASTPANEL • ECES • TEXTURE COATING • PEBBLE STONE COATING



suzuka.com.my

[suzuka.group](https://www.facebook.com/suzuka.group) | Hotline : +6012-258 7388

* Photos of the products shown in this catalogue may vary in color due to lighting condition & printing. We suggest you examine actual product samples before ordering.



METALLICS-E1-2204

EDITION
01

Strato METALLICS MERINO

"A striking textured metallic pattern that is linen like that can suit elegant but also rustic designs."



PRODUCT FEATURES



Low VOC & Odor



Green Choice, Water Based & Eco-friendly



Applicable on Ceiling



Easy to Touch Up



Formaldehyde & Lead Free



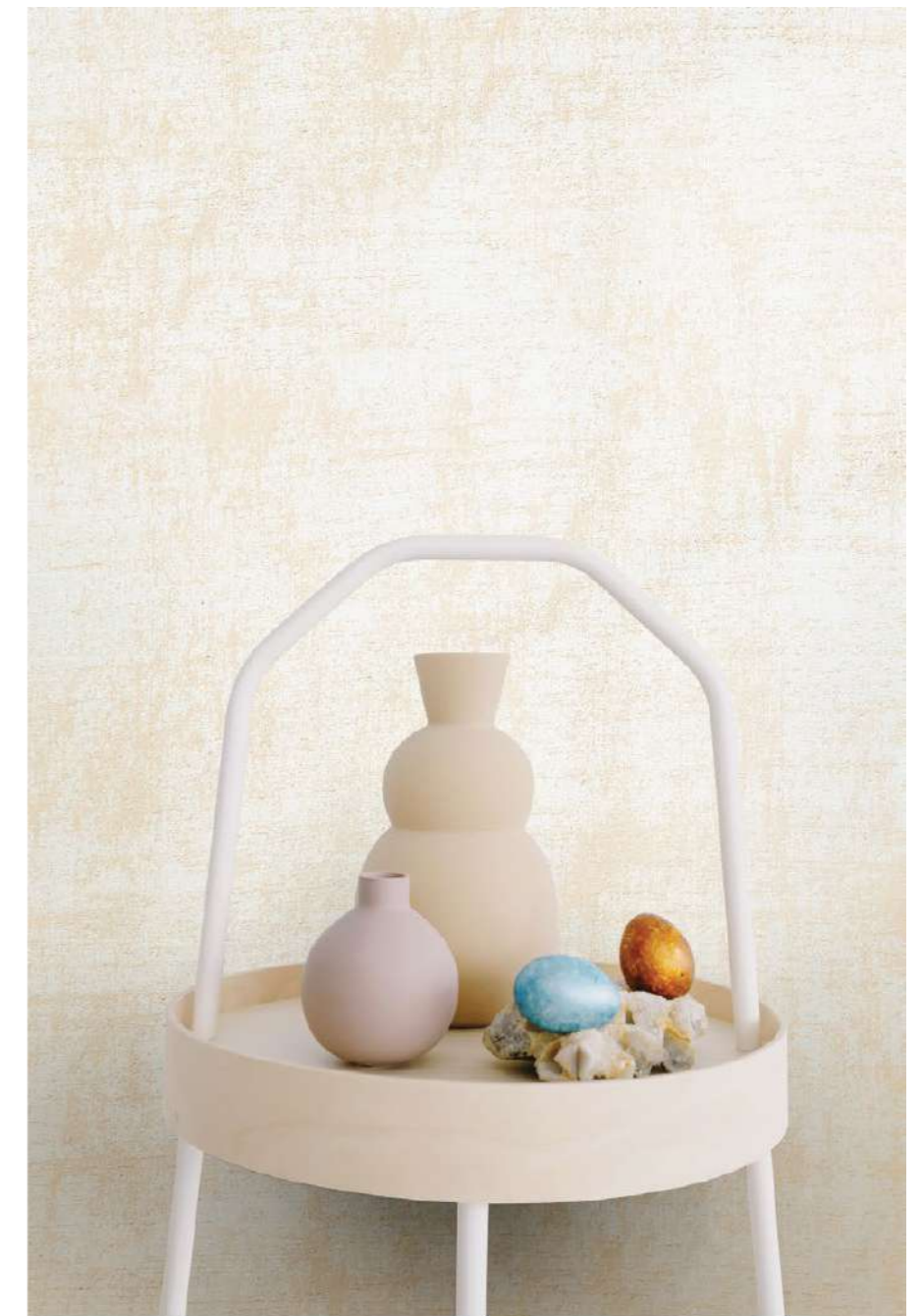
Easy Application & DIY Friendly



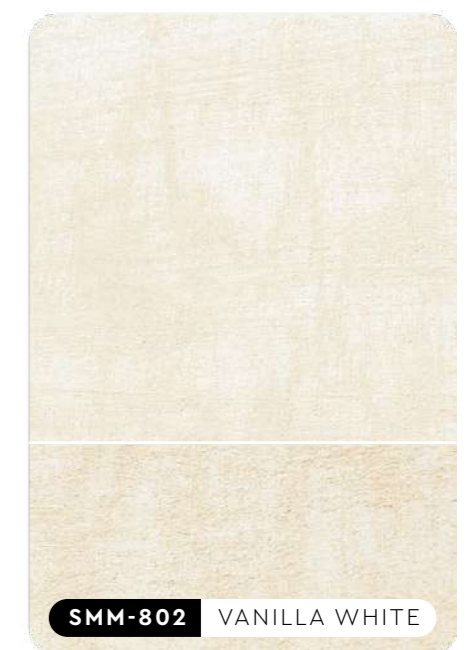
Easy Maintenance



Metallic Finish

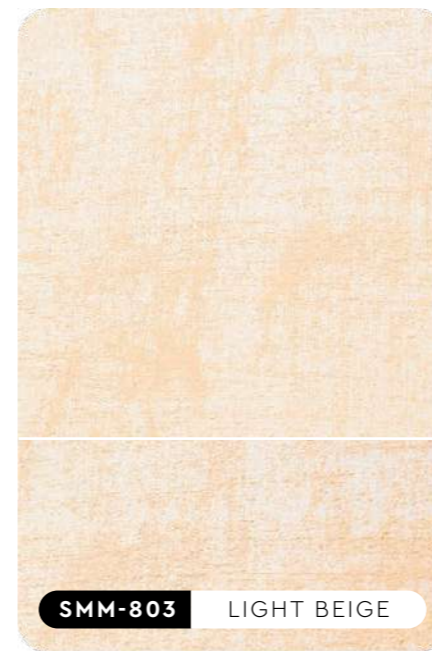
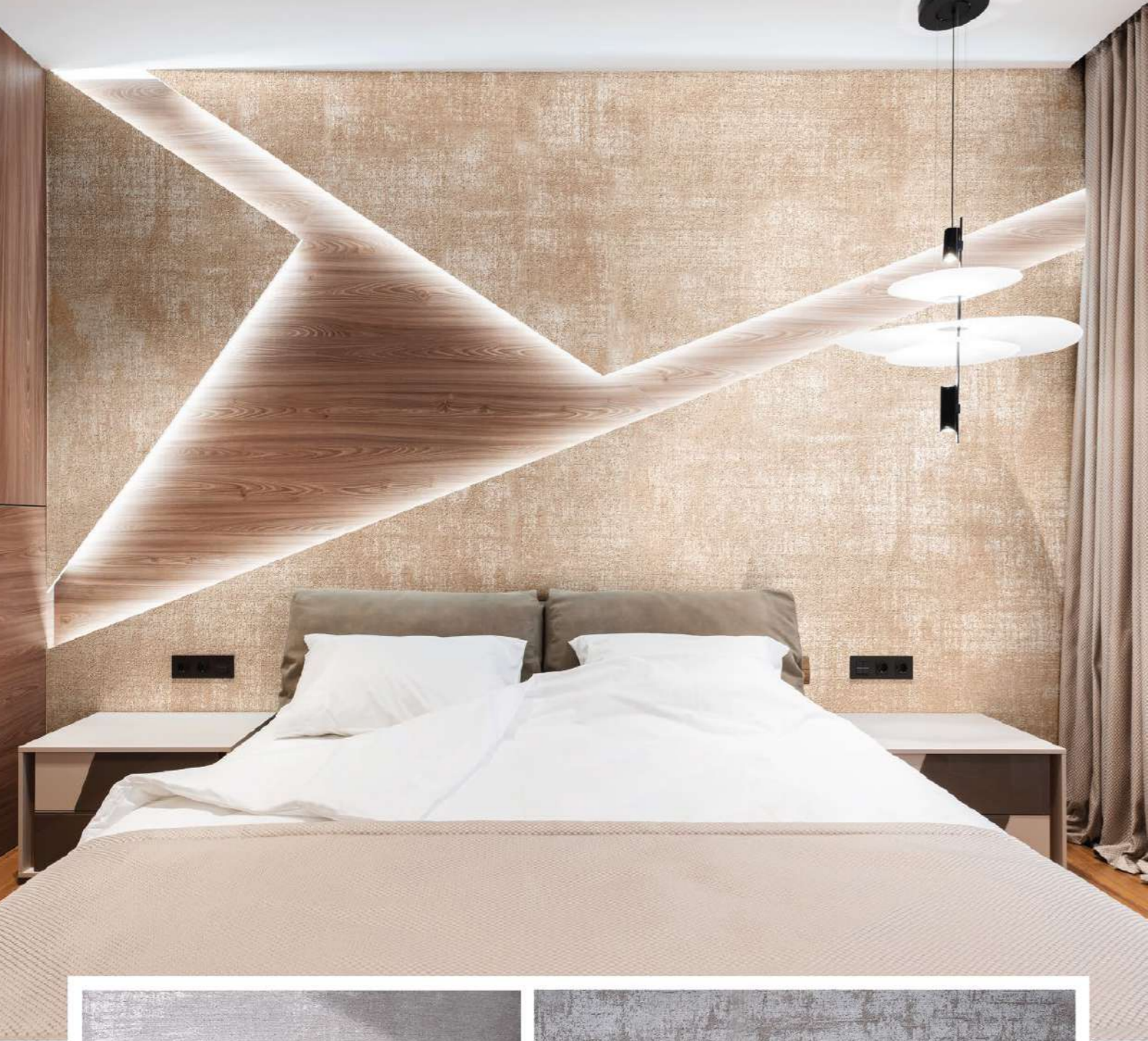


SMM-801 CRYSTAL WHITE



SMM-802 VANILLA WHITE

All color shown are as close to the actual SUZUKA® Strato® colors as modern printing techniques permit. Color appearance/finishing may vary according to amount of coats, style of strokes applied and individual painting methods.





APPLICATION TECHNIQUE



APPLICATION VIDEO

Preparation: - Cover the edges of surface that won't be painted by masking it with tape, paper or plastic.
- Clean up the wall surface to ensure it is free from dirt and dust.

STEP 1: PRIMER

Roll 2 layers of primer on the entire surface.

STEP 2: SANDING

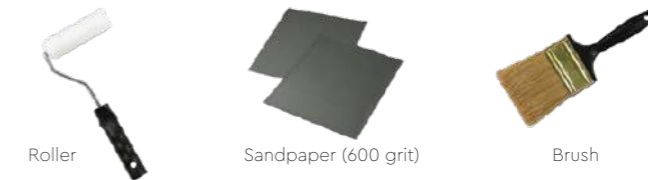
Sand surface with sandpaper (600 grit) to ensure a smooth surface.

STEP 3: TEXTURE COAT

First, brush texture coat horizontally on the surface.

Next, brush texture coat vertically on the surface.

TOOLS:



PACKING DATA

1 L	Primer
1 L	Texture Coat
Coverage (per set)	
WALL	3 - 4 m²/l
CEILING	2.5 - 3.5 m²/l



Strato: METALLICS ORGANZA

"A smooth textured pattern with rich and creamy metallic finish that is suitable for all interior designs."



PRODUCT FEATURES



Low VOC & Odor



Green Choice, Water Based & Eco-friendly



Applicable on Ceiling



Easy to Touch Up



Formaldehyde & Lead Free



Easy Application & DIY Friendly



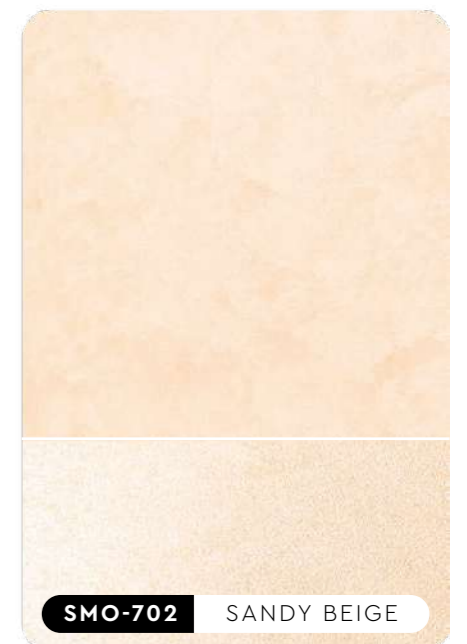
Easy Maintenance



Metallic Finish



SMO-701 FLORAL BEIGE



SMO-702 SANDY BEIGE

All color shown are as close to the actual SUZUKA® Strato® colors as modern printing techniques permit. Color appearance/finishing may vary according to amount of coats, style of strokes applied and individual painting methods.



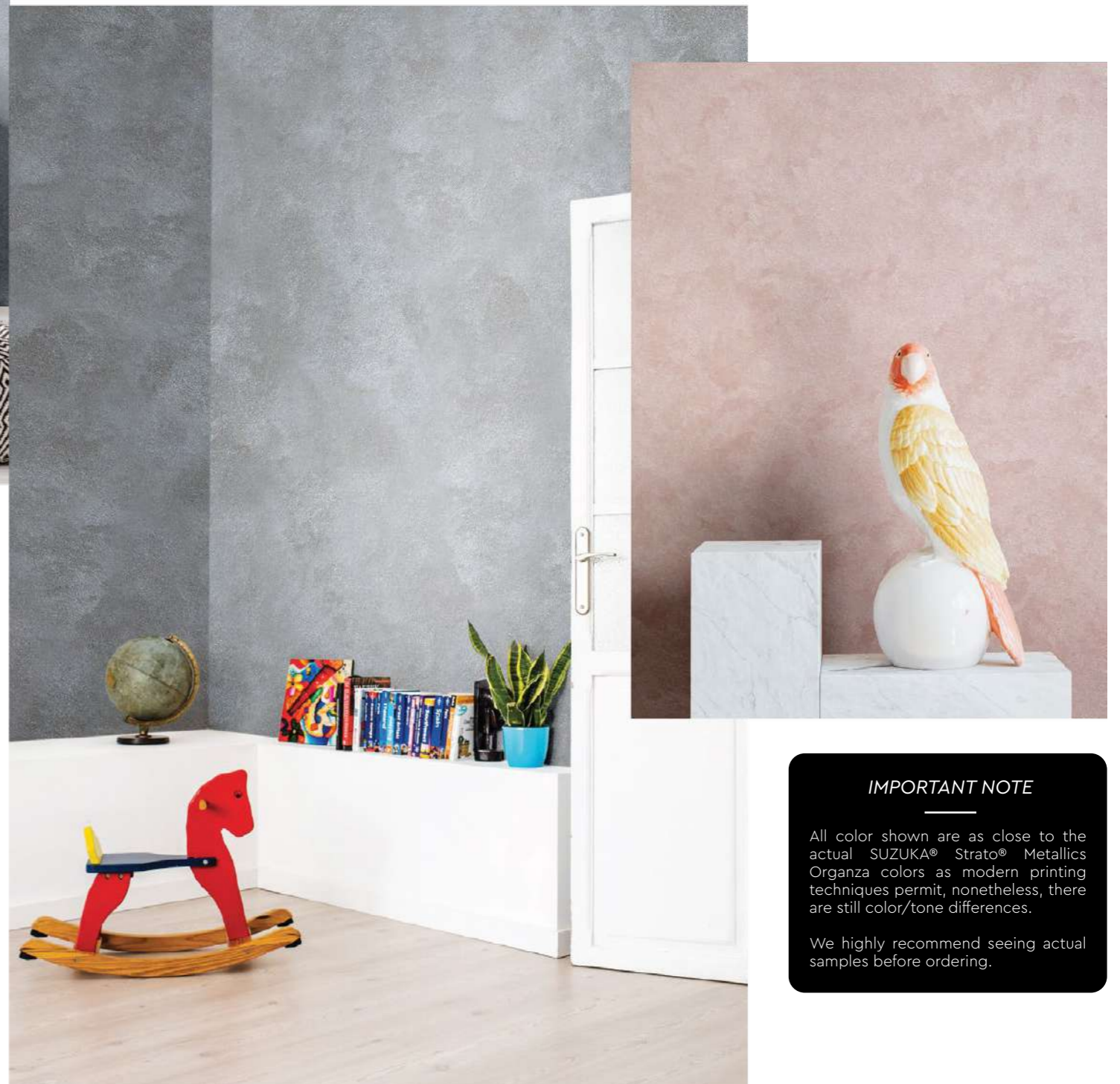
SMO-706 PEWTER GREY



SMO-707 BLUE ASH



SMO-708 ANTIQUE BLUE



SMO-703 LOTUS BLOSSOM



SMO-704 LAVENDER



SMO-705 SPACE GREY

IMPORTANT NOTE

All color shown are as close to the actual SUZUKA® Strato® colors as modern printing techniques permit, nonetheless, there are still color/tone differences.

We highly recommend seeing actual samples before ordering.



SMO-709 LAVA GREY



SMO-710 PLUM VIOLET



SMO-711 DARK AMBER



SMO-712 ANTIQUE WOOD



SMO-713 PALE MUSTARD



SMO-714 OLIVE GARDEN



APPLICATION TECHNIQUE



APPLICATION VIDEO

Preparation: - Cover the edges of surface that won't be painted by masking it with tape, paper or plastic.
- Clean up the wall surface to ensure it is free from dirt and dust.

STEP 1: PRIMER



Roll a layer of primer on the entire surface.

STEP 2: SANDING



Sand surface with sandpaper (600 grit) to ensure a smooth surface.

STEP 3: TEXTURE COAT (OPTION 1 - PICCOLO TOOL)

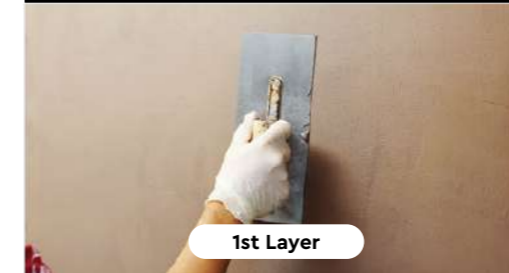


Scrape texture coat evenly on the surface. Next, use a piccolo tool to create texture effects by moving with random motion.

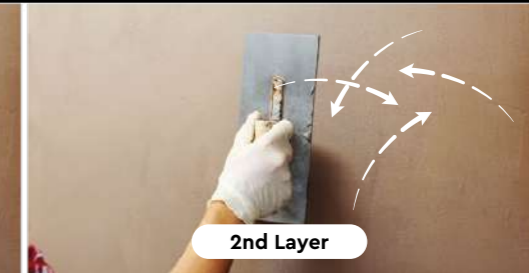


Repeat steps for a second layer of texture coat. Scrape texture coat on the surface and use piccolo tool to create texture by moving with random motion.

STEP 3: TEXTURE COAT (OPTION 2 - TROWEL)



Scrape texture coat evenly on the surface.



Scrape texture coat randomly on the surface to create texture.

TOOLS:



Roller



Sandpaper (600 grit)



Trowel



Piccolo Tool (Optional)



SMO-715 SEAL GREY



SMO-716 FOSSIL GREY



SMO-717 SAGE GREEN

PACKING DATA



1 L	Primer
1 L	Texture Coat

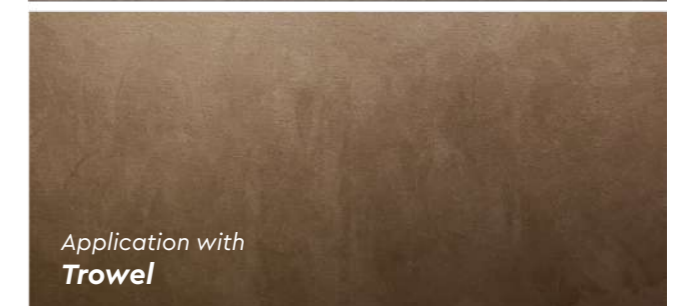
* Piccolo tool is sold separately

Coverage (per set)

WALL	6 - 7 m ² /l
CEILING	5 - 6 m ² /l



Application with Piccolo Tool



Application with Trowel

Crap & Win!
iPad Pro
 Check out our contest!
 suzuka.com.my/promotion | T&C Apply



WALL FINISH PROFESSIONALS
 TAIWAN • MALAYSIA • THAILAND

Strato:
LINNEN

INTERIOR
 TEXTURED
 PAINTS



BRICK & STONE VENEER • TEXTURED PAINT • KASTPANEL • ECES • TEXTURE COATING • PEBBLE STONE COATING



EDITION
1.2



suzuka.com.my
 suzuka.group | Hotline : +6012-258 7388

* Photos of the products shown in this catalogue may vary in color due to lighting condition & printing. We suggest you examine actual product samples before ordering.



LINNEN-E1.2-2309

Strato:
LINNEN

*Matte
 & grainy*

• **INTERIOR USE ONLY**
 Recommended for areas
 larger than 100 sqf.

STL

STL 901 - 913

Linnen is designed to add depth, quality and character to any room, it creates a rich look that is also subtle and soft on the eyes. Not only does our texture paint add an aesthetic element to your walls, it also provides a practical benefit by hiding imperfections and flaws.

Made from high-quality materials, our texture paint is available in a range of colors, allowing you to achieve the perfect look for your space. Our paint is also easy to apply, making it the perfect choice for both professional painters and DIY enthusiasts.

Appearance

Low Sheen	● ● ● ● ●	High Sheen
Smooth Texture	● ● ● ● ●	Rough Texture
Matte	● ● ● ● ●	Metallic

Features

** Interior use only.*



Low VOC & Odor



Green Choice, Water Based & Eco-friendly



Formaldehyde & Lead Free



Crack Resistant



Anti-chalking & Efflorescence



Easy Application & DIY Friendly



Applicable on Ceiling



Easy to Touch Up



Easy Maintenance



Matte Finishing

STL-901
Ivory Cream



STL-901

IVORY
CREAM

STL-903 ▶
Sandy Beige

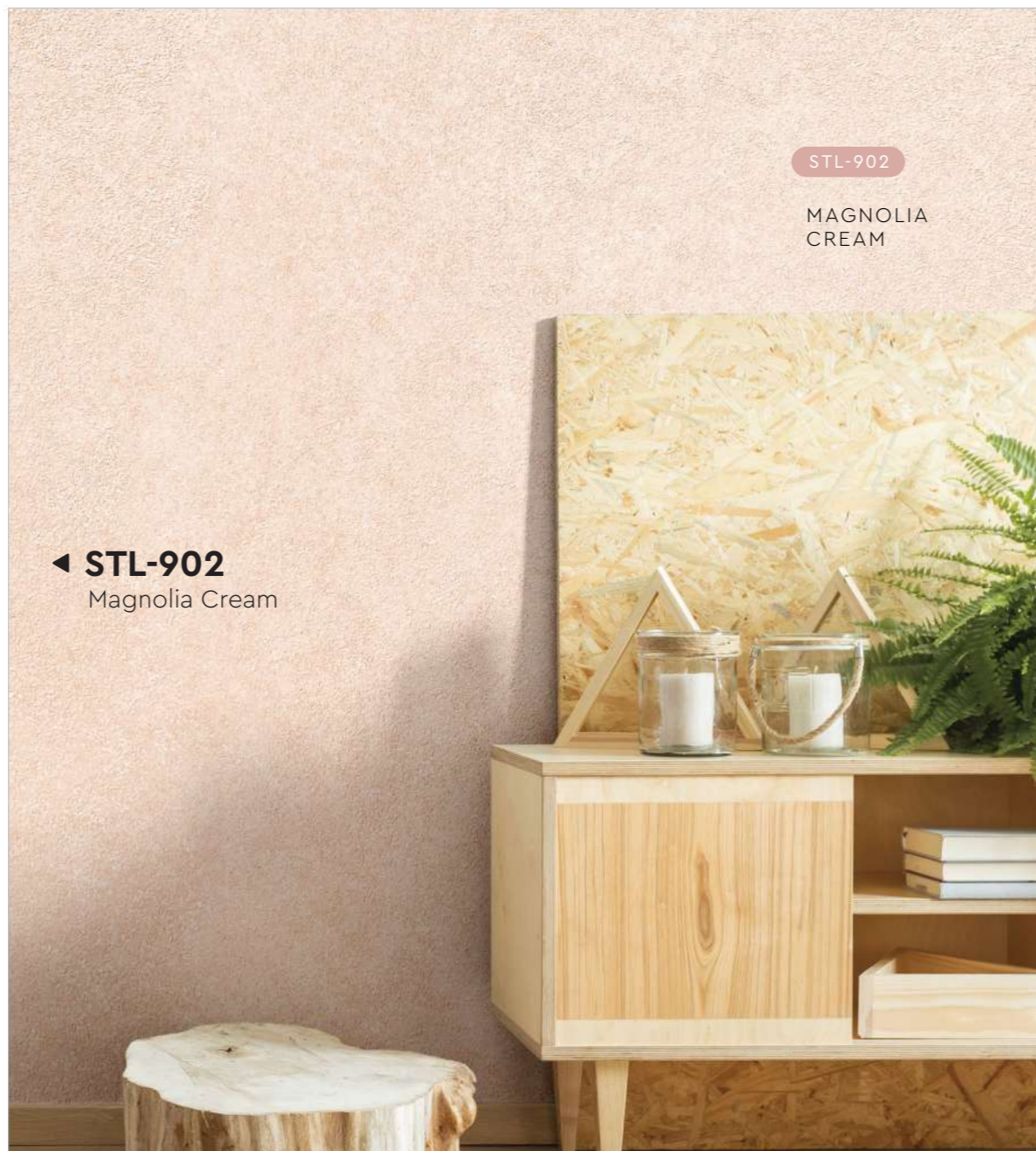
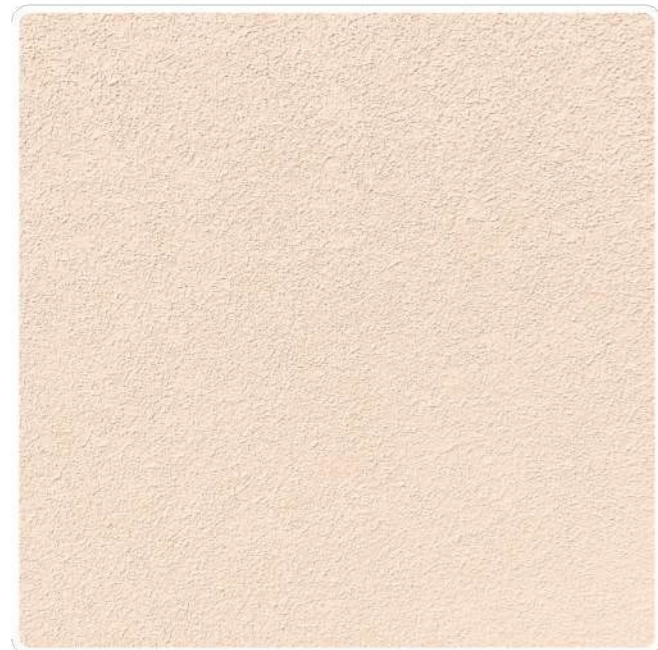
STL-902

MAGNOLIA
CREAM

STL-903

SANDY
BEIGE

◀ **STL-902**
Magnolia Cream





STL-904

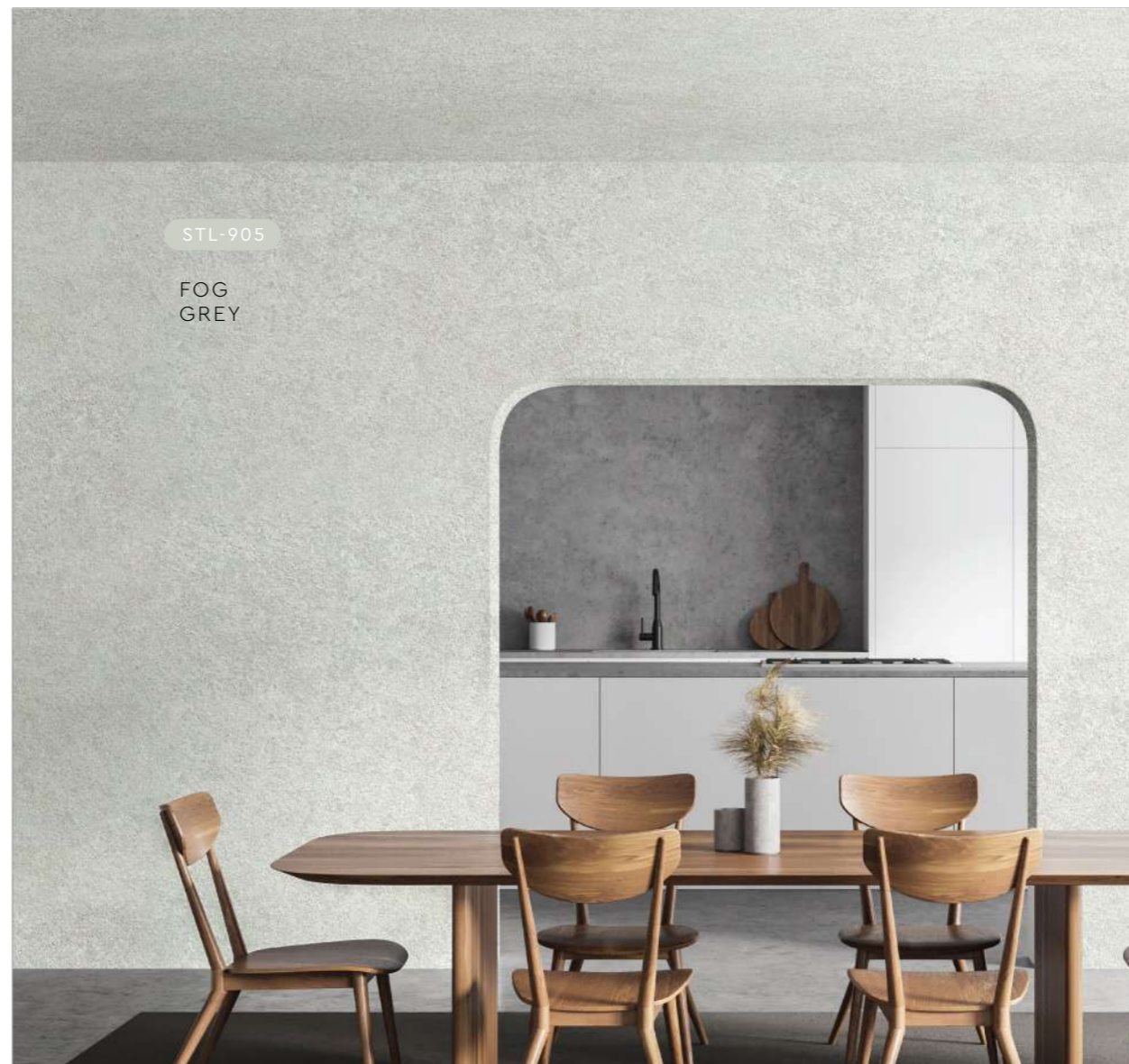
RIVER
GREY



STL-906

FROST
GREY

STL-906 ▶
Frost Grey



STL-905

FOG
GREY

STL-907 ▲
Thunder Grey



▲ STL-904
River Grey

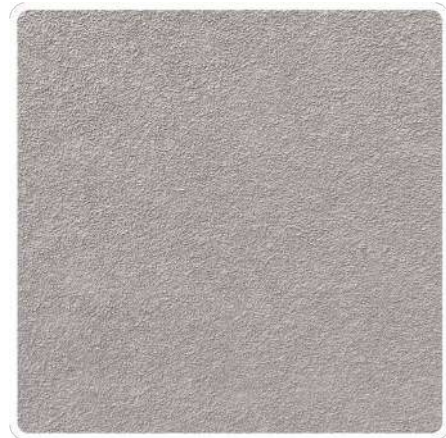


▲ STL-905
Fog Grey



STL-907

THUNDER
GREY



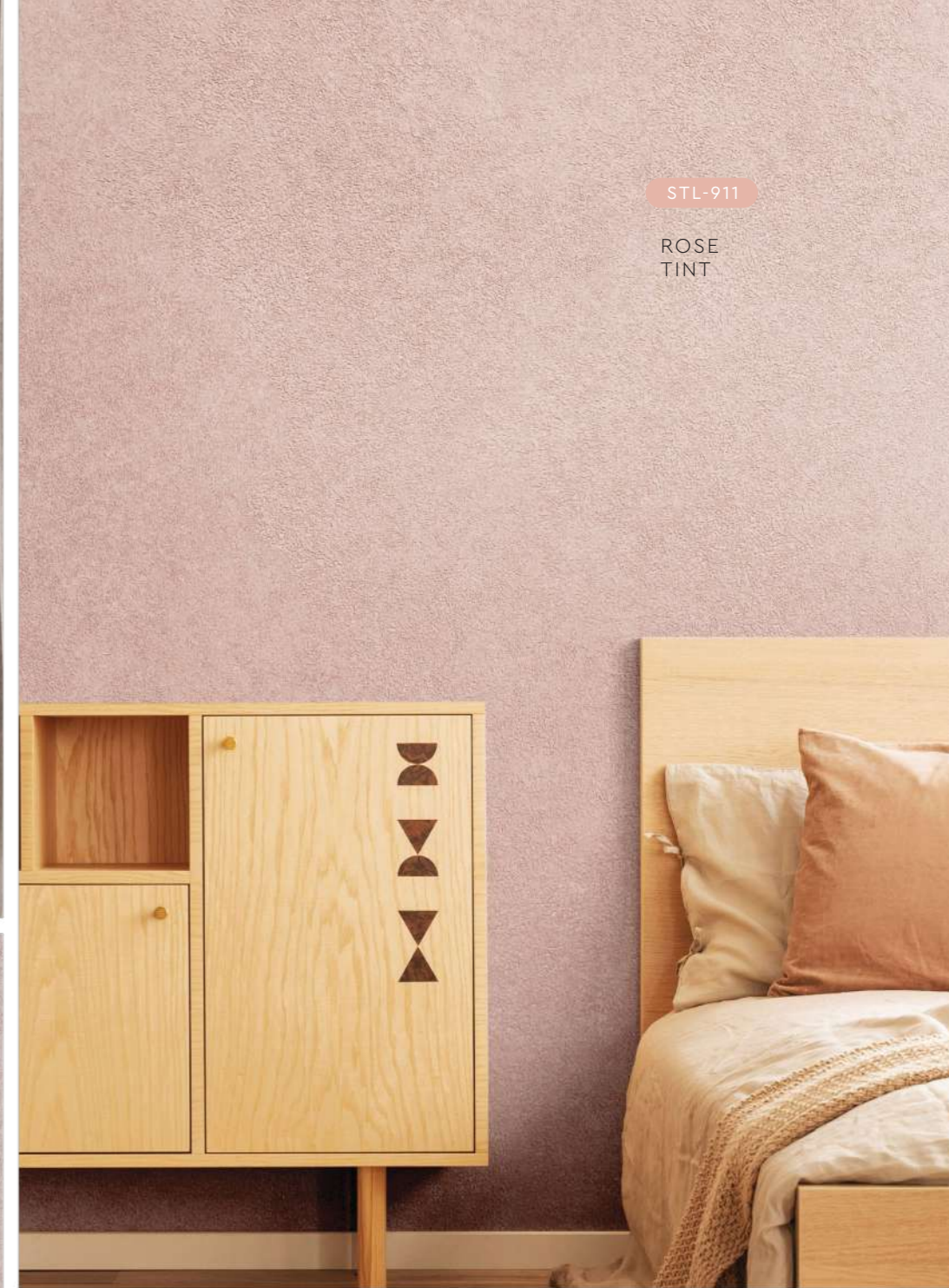
◀ **STL-908**
Smokey Grey



STL-908
SMOKEY
GREY

STL-911

ROSE
TINT



▲ **STL-909**
Lead Grey

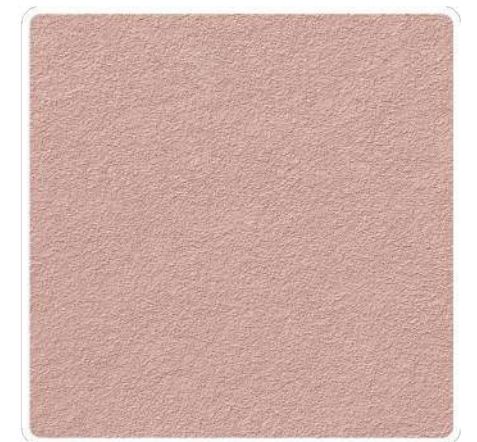
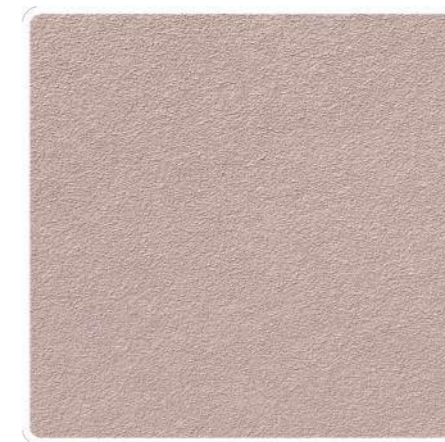
STL-909

LEAD
GREY



STL-910

TAUPE
CREPE



▲ **STL-910**
Taupe Crepe

▲ **STL-911**
Rose Tint

STL-912

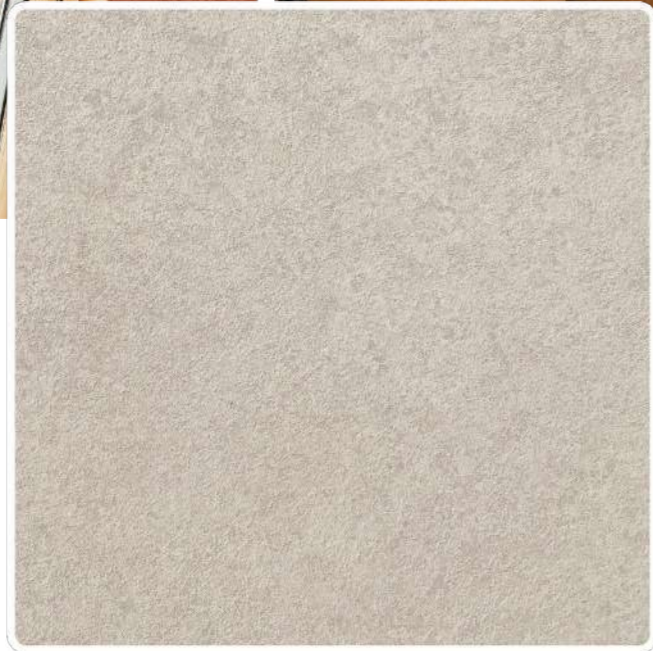
BURNT
ORANGE



▲ **STL-912**
Burnt Orange

STL-913

CRAFT
GREY



▲ **STL-913**
Craft Grey

Application Technique

APPLICATION VIDEO



Preparation:

- Cover the edges of surface that won't be painted by masking it with tape, paper or plastic.
- Clean up the wall surface to ensure it is free from dirt and dust.

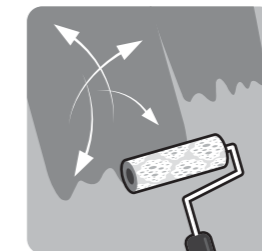


1 Primer

Roll 2 layers of primer on the entire surface. Allow 30 minutes to dry between the layers.

(The primer can be diluted with maximum 5% of clean water)

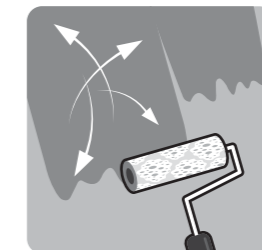
Tool: Paint Roller



2 Texture Coat

Texture Coat (First Layer)

Roll texture coat randomly on the surface. Ensure the whole surface is covered. Let dry.



Texture Coat (Second Layer)

Roll second layer of texture coat randomly on the surface. Let dry.

Tool: Linnen Texture Roller

IMPORTANT:

Color may vary on application technique & amount of material used.



Packing Data

1 L	Primer	Coverage (per set)	9 - 10 sqm (Application on Wall & Ceiling)
2 L	Texture Coat		

* Linnen Texture Roller is sold separately

Tools:



Paint Roller



Linnen
Texture Roller