



STRATO[®]

CEMENT TEXTURE & VELOURS

EDITION
1.1

WALL FINISH PROFESSIONALS

TAIWAN • MALAYSIA • THAILAND



Matte & smooth

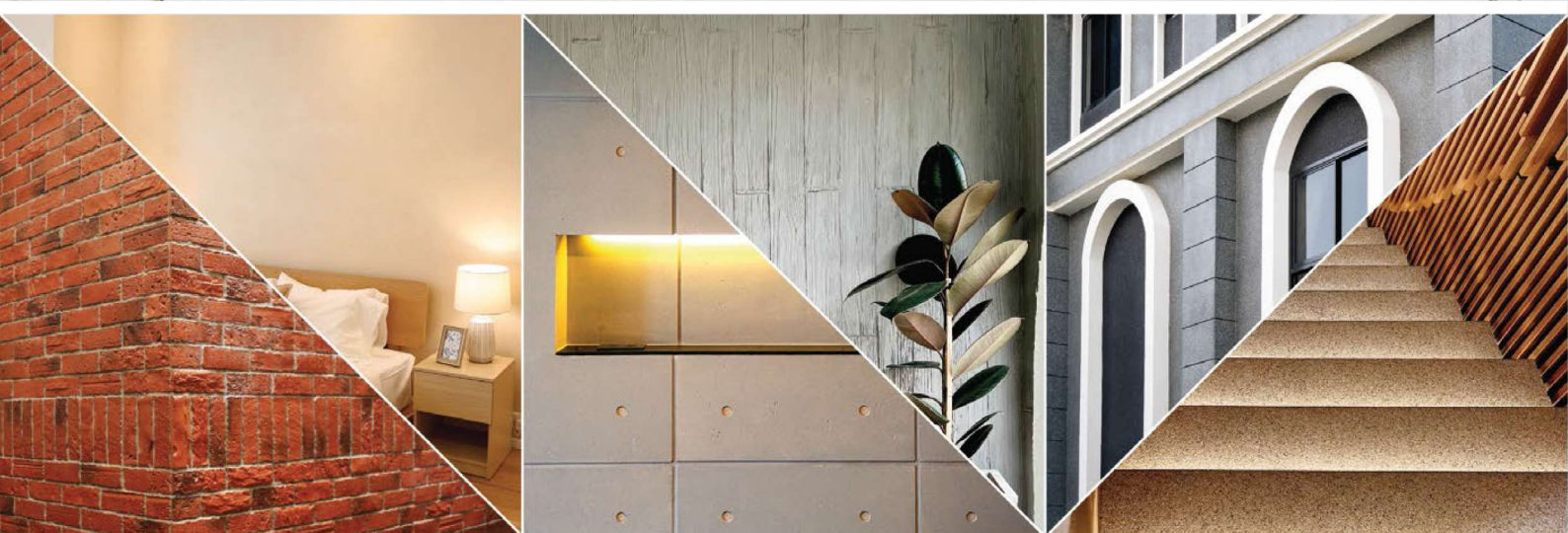
INTERIOR
TEXTURED PAINTS

Complies to the
American California
Proposition 65 Standard



WALL FINISH
PROFESSIONALS.

SINCE
1977



BRICK & STONE VENEER • TEXTURED PAINT • KASTPANEL • ECES • TEXTURE COATING • PEBBLE STONE COATING



nuhaus.org

[nuhaus_brunei](https://www.instagram.com/nuhaus_brunei) | Hotline : +673 730 6870 | 875 9880

* Photos of the products shown in this catalogue may vary in color due to lighting condition & printing. We suggest you examine actual product samples before ordering.



SCT & SVL-E1.1-2402

STRATO®

Matte & smooth

1

STRATO® CEMENT TEXTURE

Page 3 - 12

2

STRATO® VELOURS

Page 13 - 26



SUZUKA® WALL SEALER PRO

“ Make your
wall finishes
last longer! ”



Packing Size: **1L** **5L** **20L**

Superior primer for concrete, skimmed or masonry surfaces.

This sealer that has good substrate penetration abilities to increase adhesion of product to prevent chalking or peeling off.

It has excellent alkaline resistance properties that can prevent efflorescence. It is an ideal base coat for any SUZUKA® or any wall finish products.

Coverage	Drying Time (hour)	
6.5 - 8.5 m ² /l/coat	Surface Dry : 1	Substrate Temperature: 23°C - 26°C
	Hard Dry : 5	
	Recoating : 5	

Features:

- Excellent alkaline resistance to prevent efflorescence.
- Good for new walls and repainting.
- Prevents skim coat from chalking & peeling off.
- Extremely good penetration.
- Excellent adhesion.
- Exterior and interior use.
- Applicable with brush, roller or spray gun.

Suitable for:

- Masonry wall
- Brickwork
- Plaster
- Skimmed Coat
- Asbestos free substrate

Airless Spray

Nozzle	Spray Angle Degree	Pressure
1.8 - 2.0 mm	65° - 80°	210 psi/150kg/cm ²

Create two different patterns with
SCT or SVL using different tools and techniques!



Trowel Pattern

Application
with trowel.



Piccolo Pattern

Application
with piccolo tool.

STRATO[®] Cement TEXTURE

SCT



SCT 301 - 310

Create everlasting look with Strato[®] Cement Texture. Whether you are going for the industrial, scandinavian, contemporary or minimalistic style, the backdrop of the cement texture can complete the look.

Create two different patterns with Strato[®] Cement Texture using different tools and techniques!

Appearance

Low Sheen	● ● ● ● ●	High Sheen
Smooth Texture	● ● ● ● ●	Rough Texture
Matte	● ● ● ● ●	Metallic

Features



Low VOC & Odor



Green Choice, Water Based & Eco-friendly



Formaldehyde & Lead Free



Crack Resistant



Anti-chalking & Efflorescence



Easy Application & DIY Friendly



Applicable on Ceiling



Easy to Touch Up



Easy Maintenance



Matte Finishing

- Interior use only
- Complies to the American California Proposition 65 Standard

SCT
**Trowel
 Pattern**

Matte & Smooth
 Finishing.



SCT-301 Silver Grey



SCT-302 Natural Grey



SCT-303 Shark Grey



SCT-304 Granite Grey



SCT-305 Iron Grey



SCT-306 Charcoal Grey



SCT-307 Metal Grey



SCT-308 Shadow Grey



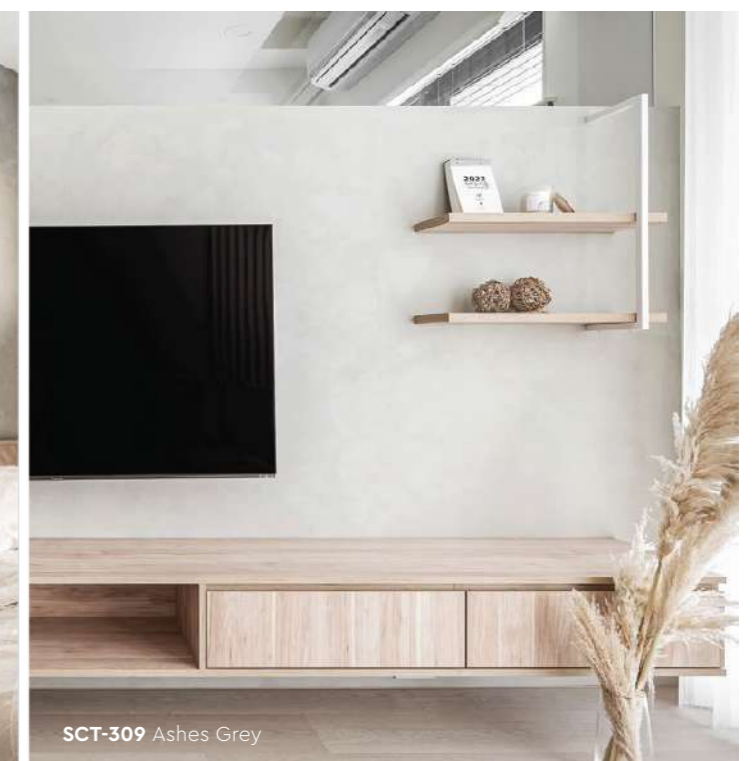
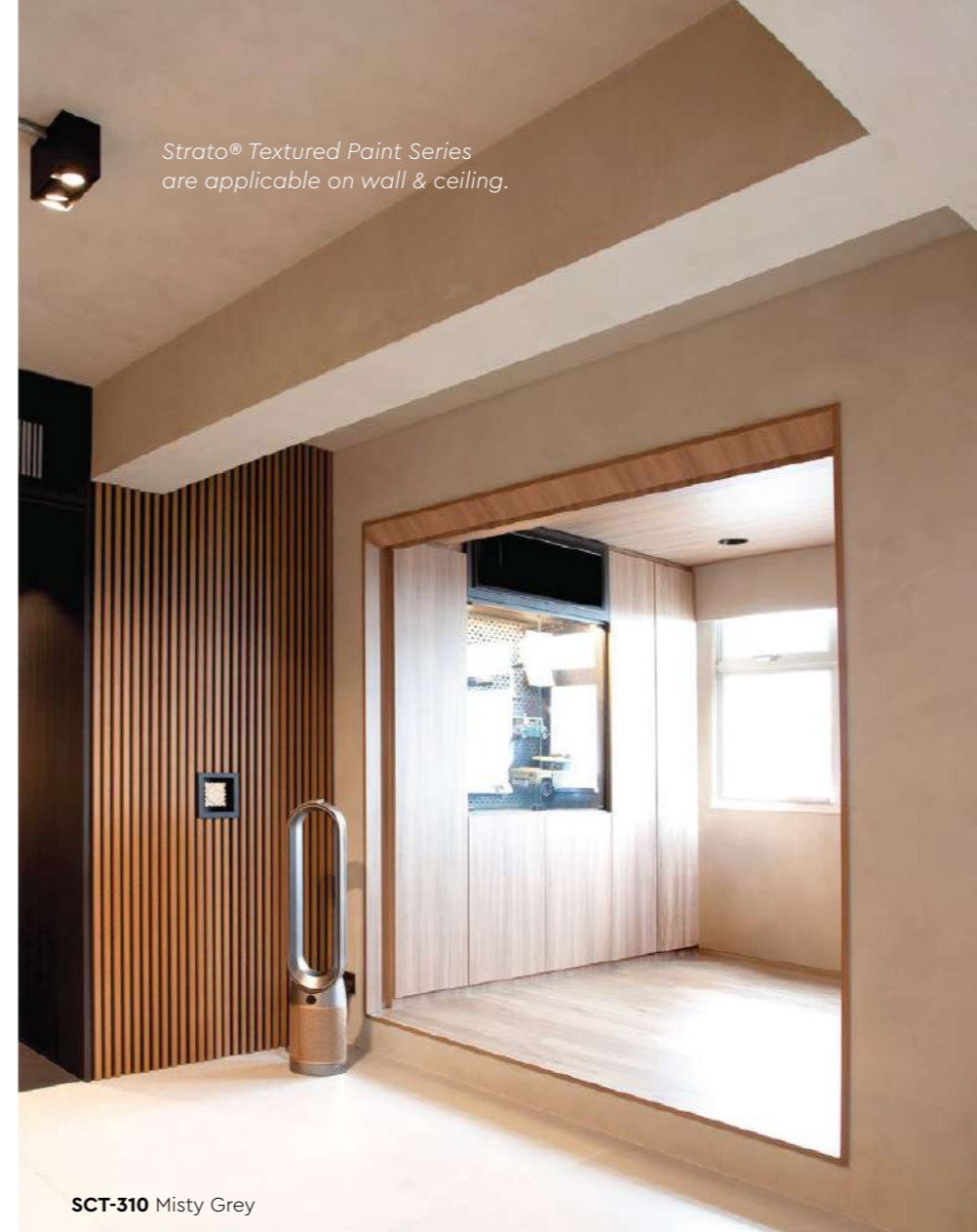
SCT-309 Ashes Grey



SCT-310 Misty Grey



SCT-311 Dove White





Interior Design by
D EWANI[®]

SCT-304 Granite Grey



SCT-301 Silver Grey



Trowel Pattern

Application Video



Application Technique

Preparation:

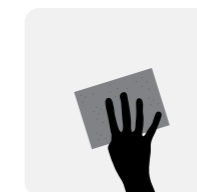
- Cover the edges of surface that won't be painted by masking it with tape, paper or plastic.
- Clean up the wall surface to ensure it is free from dirt and dust.



1 Primer

Roll 2 layers of primer on the entire surface. Allow 30 minutes to dry between the layers.
(The primer can be diluted with maximum 5% of clean water)

Tool: Roller



2 Sanding

Sand the entire surface in circular motion to ensure the surface is smooth.

Tool: 600 Grit Sand Paper



3 Texture Coat

Scrape texture coat randomly to create pattern. Ensure the whole surface area is covered. Then apply second layer.

(use a larger trowel for a larger pattern, a smaller trowel for smaller pattern)

Tool: Stainless Steel Trowel



4 Sanding (Optional)

Sand the entire surface in circular motion to enhance the pattern.

Tool: 600 Grit Sand Paper



5 Topcoat

Apply SR-Top 1 on entire surface using a dry sponge in circular motions.

IMPORTANT: Use a clean and dry sponge/cleaning cloth to wipe the excess topcoat before it dries to avoid the sponge marks.

Tool: Sponge / Cleaning Cloth

IMPORTANT:

Color may vary on application technique & amount of material used.



Packing Data

1 L	Primer
1 L	Texture Coat
0.5 L	Topcoat (SR-Top 1)

Coverage (per set)

WALL	6 - 7 sqm
CEILING	5 - 6 sqm



Tools: Trowel/Scraper, Roller, Sand Paper (600 Grit), Sponge & Cleaning Cloth

SCT
**Piccolo
 Pattern**

Matte & Smooth
 Finishing.



SCT-301 Silver Grey



SCT-302 Natural Grey



SCT-303 Shark Grey



SCT-304 Granite Grey



SCT-305 Iron Grey



SCT-306 Charcoal Grey



SCT-307 Metal Grey



SCT-308 Shadow Grey



SCT-309 Ashes Grey



SCT-310 Misty Grey



SCT-311 Dove White



SCT-302 Natural Grey



SCT-306 Charcoal Grey



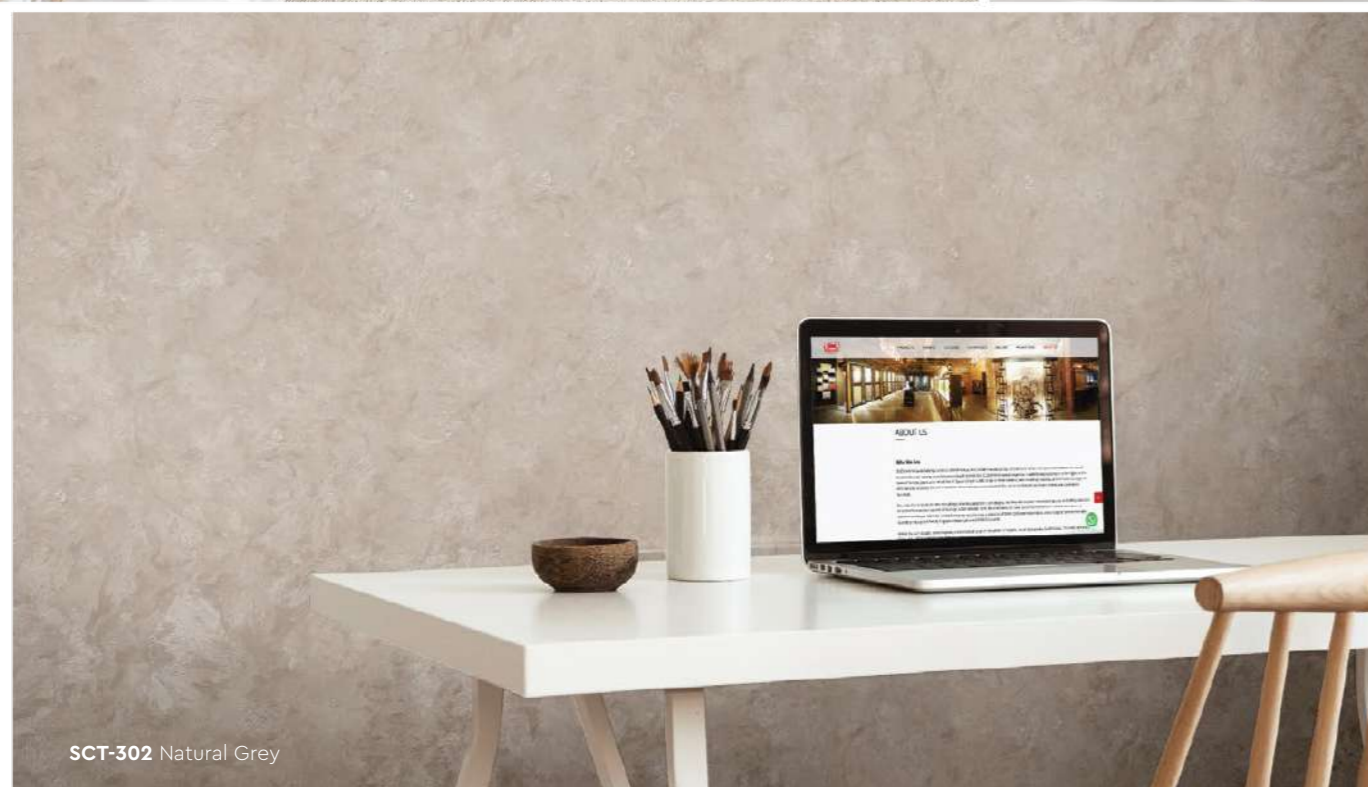
SCT-301 Silver Grey



SCT-309 Ashes Grey



SCT-304 Granite Grey



SCT-302 Natural Grey

Piccolo Pattern

Application Technique

Application Video



Preparation:

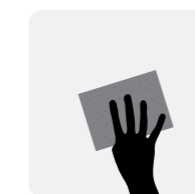
- Cover the edges of surface that won't be painted by masking it with tape, paper or plastic.
- Clean up the wall surface to ensure it is free from dirt and dust.



1 Primer

Roll 2 layers of primer on the entire surface. Allow 30 minutes to dry between the layers. (The primer can be diluted with maximum 5% of clean water)

Tool: Roller



2 Sanding

Sand the entire surface in circular motion to ensure the surface is smooth.

Tool: 600 Grit Sand Paper



3 Texture Coat

Step A : Trowel

Scrape texture coat evenly onto the surface.

Tool: Stainless Steel Trowel



Step B : Piccolo

Use piccolo tool to create swirl texture effects by moving with random circular motion.

Tool: Piccolo Tool



4 Topcoat

Apply SR-Top 1 on entire surface using a dry sponge in circular motions.

IMPORTANT: Use a clean and dry sponge/cleaning cloth to wipe the excess topcoat before it dries to avoid the sponge marks.

Tool: Sponge / Cleaning Cloth

IMPORTANT:

Color may vary on application technique & amount of material used.



Packing Data

1 L	Primer
1 L	Texture Coat
0.5 L	Topcoat (SR-Top 1)

Coverage (per set)

WALL	6 - 7 sqm
CEILING	5 - 6 sqm



Tools: Trowel, Piccolo, Roller, Sand Paper (600 Grit), Sponge & Cleaning Cloth

STRATO® Velours



SVL



SVL 401 - 426

Rich velvety layers of color to enhance the interior space. Each color brings out a different mood and ambience, find a color that matches your personality

Create two different patterns with Strato® Velours using different tools and techniques!

Appearance

Low Sheen		High Sheen
Smooth Texture		Rough Texture
Matte		Metallic

Features



Low VOC & Odor



Green Choice, Water Based & Eco-friendly



Formaldehyde & Lead Free



Crack Resistant



Anti-chalking & Efflorescence



Easy Application & DIY Friendly



Applicable on Ceiling



Easy to Touch Up



Easy Maintenance



Matte Finishing

- Interior use only
- Complies to the American California Proposition 65 Standard

SVL
**Trowel
 Pattern**

Matte & Smooth
 Finishing.



SVL-401 Cloudy Grey



SVL-402 Mushroom Beige



SVL-403 Hazel Wood



SVL-404 Summer Sahara



SVL-405 Walnut Leather



SVL-406 Brocade Blue



SVL-407 Deep Marine



SVL-408 Royal Denim



SVL-409 Violet Memory



SVL-410 Rosy Mauve



SVL-411 Frosted Mint



SVL-406 Brocade Blue



SVL-401 Cloudy Grey



SVL-404 Summer Sahara



SVL-410 Rosy Mauve



SVL-417 Vanilla Cream



SVL-417 Vanilla Cream



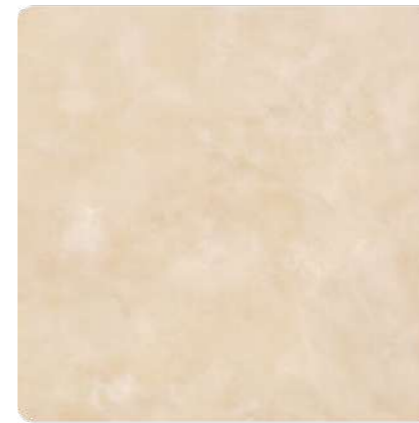
SVL-415 Lime Mist



SVL-416 Flamingo Blush



SVL-417 Vanilla Cream



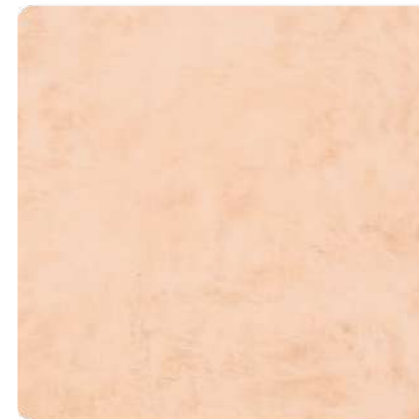
SVL-418 Oat Beige



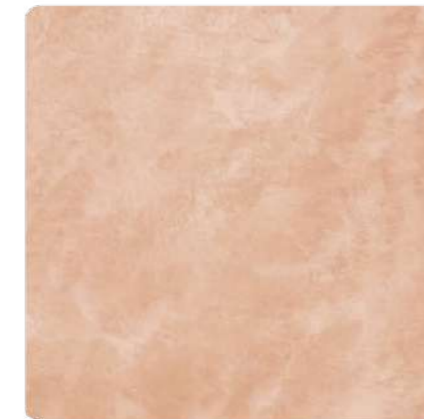
SVL-419 Blush Cream



SVL-420 Wheat Beige



SVL-421 Light Apricot



SVL-422 Coral Peach



SVL-423 Lime Citrus



SVL-412 Vivid Emerald



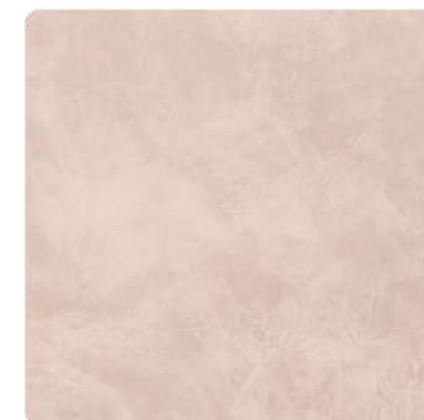
SVL-413 Hunter Green



SVL-414 Herbal Garden



SVL-424 Dried Basil



SVL-425 Mauve Chalk



SVL-426 Ivory Cream



SVL-413 Hunter Green



SVL-425 Mauve Chalk



SVL-408 Royal Denim



SVL-408 Royal Denim

Trowel Pattern

Application Technique

Application Video



Preparation:

- Cover the edges of surface that won't be painted by masking it with tape, paper or plastic.
- Clean up the wall surface to ensure it is free from dirt and dust.



1 Primer

Roll 2 layers of primer on the entire surface. Allow 30 minutes to dry between the layers. (The primer can be diluted with maximum 5% of clean water)

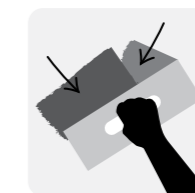
Tool: Roller



2 Sanding

Sand the entire surface in circular motion to ensure the surface is smooth.

Tool: 600 Grit Sand Paper



3 Texture Coat

Scrape texture coat randomly to create pattern. Ensure the whole surface area is covered. Then apply second layer.

(use a larger trowel for a larger pattern, a smaller trowel for smaller pattern)

Tool: Stainless Steel Trowel



4 Sanding (Optional)

Sand the entire surface in circular motion to enhance the pattern.

Tool: 600 Grit Sand Paper



5 Topcoat

Apply SR-Top 1 on entire surface using a dry sponge in circular motions.

IMPORTANT: Use a clean and dry sponge/cleaning cloth to wipe the excess topcoat before it dries to avoid the sponge marks.

Tool: Sponge / Cleaning Cloth

IMPORTANT:

Color may vary on application technique & amount of material used.

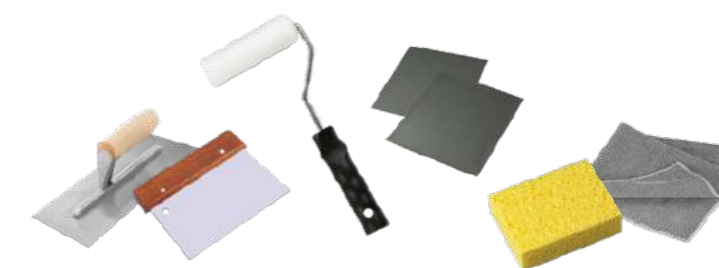


Packing Data

1 L	Primer
1 L	Texture Coat
0.5 L	Topcoat (SR-Top 1)

Coverage (per set)

WALL	6 - 7 sqm
CEILING	5 - 6 sqm



Tools: Trowel/Scraper, Roller, Sand Paper (600 Grit), Sponge & Cleaning Cloth

SVL Piccolo Pattern

Matte & Smooth
Finishing.



SVL-401 Cloudy Grey



SVL-402 Mushroom Beige



SVL-403 Hazel Wood



SVL-404 Summer Sahara



SVL-405 Walnut Leather



SVL-406 Brocade Blue



SVL-407 Deep Marine



SVL-408 Royal Denim



SVL-409 Violet Memory



SVL-410 Rosy Mauve



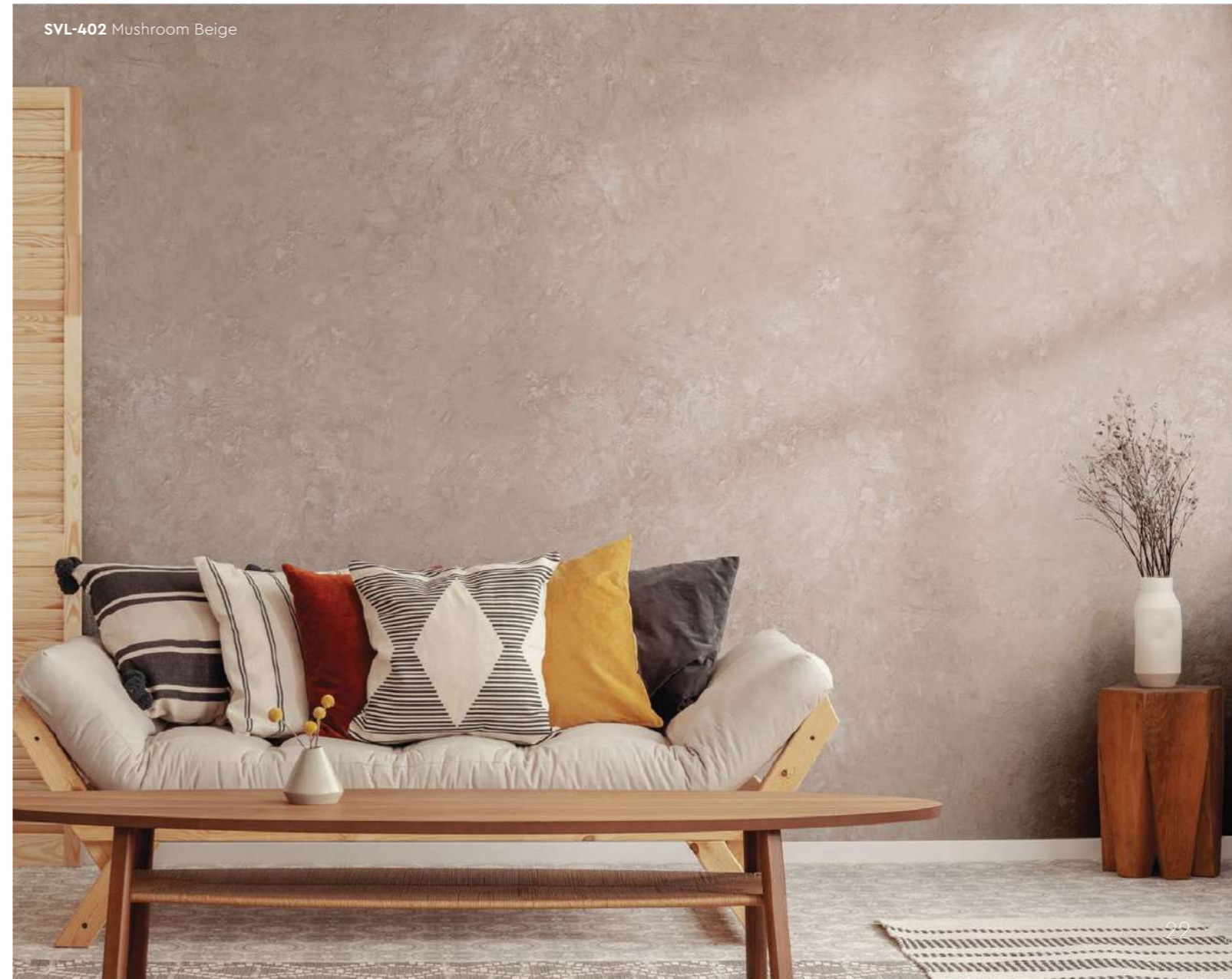
SVL-411 Frosted Mint



SVL-401 Cloudy Grey



SVL-406 Brocade Blue



SVL-402 Mushroom Beige



SVL-414 Herbal Garden



SVL-415 Lime Mist



SVL-416 Flamingo Blush



SVL-417 Vanilla Cream



SVL-418 Oat Beige



SVL-419 Blush Cream



SVL-420 Wheat Beige



SVL-421 Light Apricot



SVL-422 Coral Peach



SVL-423 Lime Citrus



SVL-412 Vivid Emerald



SVL-413 Hunter Green



SVL-414 Herbal Garden



SVL-424 Dried Basil



SVL-425 Mauve Chalk



SVL-426 Ivory Cream



SVL-420 Wheat Beige



SVL-425 Mauve Chalk



SVL-422 Coral Peach

Piccolo Pattern

Application Technique

Application Video



Preparation:

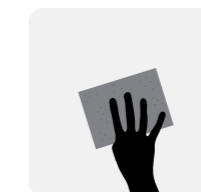
- Cover the edges of surface that won't be painted by masking it with tape, paper or plastic.
- Clean up the wall surface to ensure it is free from dirt and dust.



1 Primer

Roll 2 layers of primer on the entire surface. Allow 30 minutes to dry between the layers. (The primer can be diluted with maximum 5% of clean water)

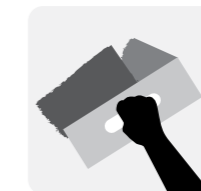
Tool: Roller



2 Sanding

Sand the entire surface in circular motion to ensure the surface is smooth.

Tool: 600 Grit Sand Paper



3 Texture Coat

Step A : Trowel

Scrape texture coat evenly onto the surface.

Tool: Stainless Steel Trowel



Step B : Piccolo

Use piccolo tool to create swirl texture effects by moving with random circular motion.

Tool: Piccolo Tool



4 Topcoat

Apply SR-Top 1 on entire surface using a dry sponge in circular motions.

IMPORTANT: Use a clean and dry sponge/cleaning cloth to wipe the excess topcoat before it dries to avoid the sponge marks.

Tool: Sponge / Cleaning Cloth

IMPORTANT:

Color may vary on application technique & amount of material used.



Packing Data

1 L	Primer
1 L	Texture Coat
0.5 L	Topcoat (SR-Top 1)

Coverage (per set)

WALL	6 - 7 sqm
CEILING	5 - 6 sqm



Tools: Trowel, Piccolo, Roller, Sand Paper (600 Grit), Sponge & Cleaning Cloth



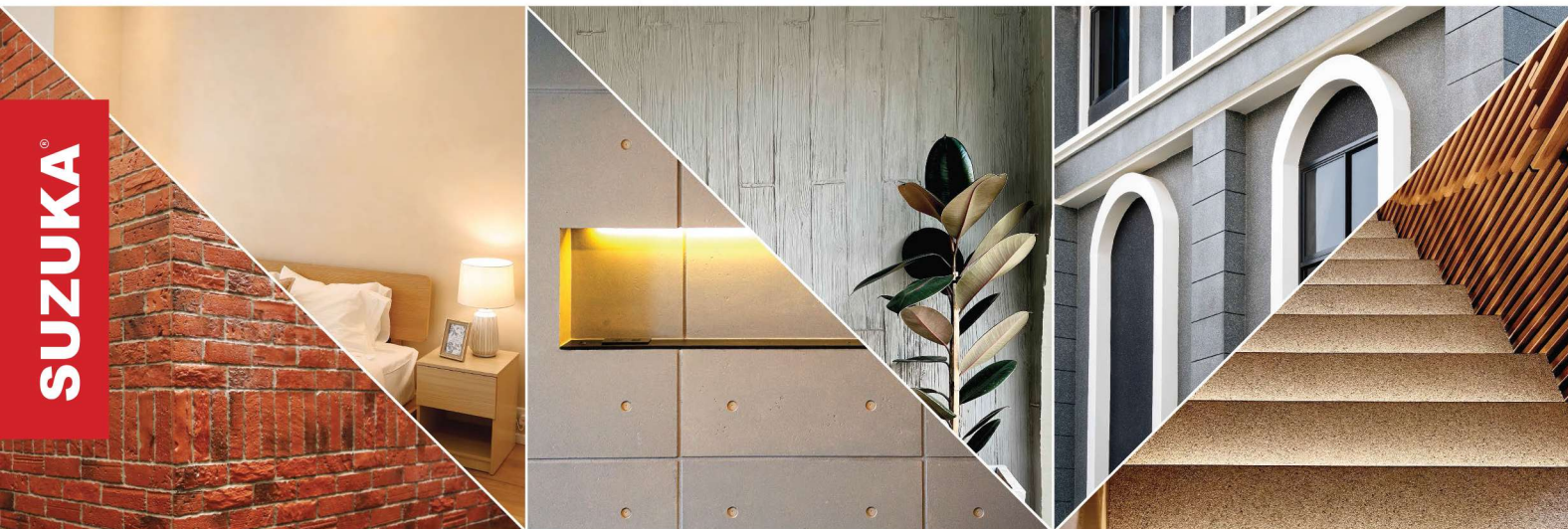
Strato:
LINNEN

INTERIOR
TEXTURED
PAINTS

WALL FINISH PROFESSIONALS

TAIWAN • MALAYSIA • THAILAND

SUZUKA



BRICK & STONE VENEER • TEXTURED PAINT • KASTPANEL • ECES • TEXTURE COATING • PEBBLE STONE COATING



nuhaus.org

nuhaus_brunei | Hotline : +673 730 6870 | 875 9880

* Photos of the products shown in this catalogue may vary in color due to lighting condition & printing. We suggest you examine actual product samples before ordering.



LINNEN-E1.2-2309



EDITION
1.2

Strato:

LINNEN

Matte & grainy

• **INTERIOR USE ONLY**
 Recommended for areas larger than 100 sqf.

STL

STL 901 - 913

Linnen is designed to add depth, quality and character to any room, it creates a rich look that is also subtle and soft on the eyes. Not only does our texture paint add an aesthetic element to your walls, it also provides a practical benefit by hiding imperfections and flaws.







Made from high-quality materials, our texture paint is available in a range of colors, allowing you to achieve the perfect look for your space. Our paint is also easy to apply, making it the perfect choice for both professional painters and DIY enthusiasts.

Appearance

Low Sheen	● ● ● ● ●	High Sheen
Smooth Texture	● ● ● ● ●	Rough Texture
Matte	● ● ● ● ●	Metallic

Features

* Interior use only.

 Low VOC & Odor	 Green Choice, Water Based & Eco-friendly
 Formaldehyde & Lead Free	 Crack Resistant
 Anti-chalking & Efflorescence	 Easy Application & DIY Friendly
 Applicable on Ceiling	 Easy to Touch Up
 Easy Maintenance	 Matte Finishing

STL-901
Ivory Cream



STL-901

IVORY
CREAM

STL-903 ▶
Sandy Beige

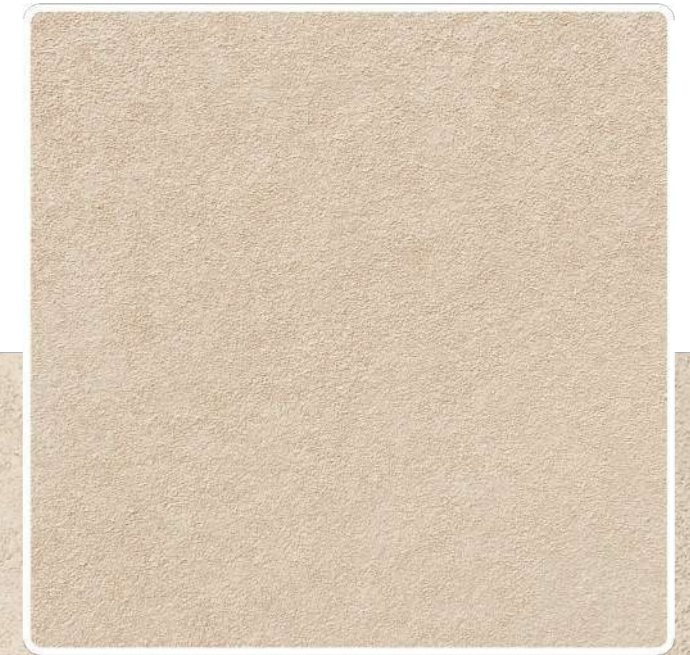
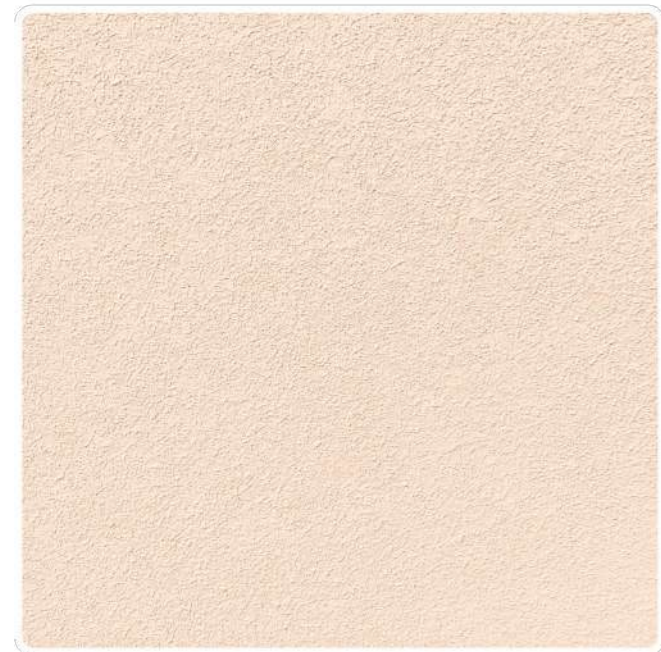
STL-902

MAGNOLIA
CREAM

STL-903

SANDY
BEIGE

◀ **STL-902**
Magnolia Cream



3 All color shown are as close to the actual SUZUKA® Strato® colors as modern printing techniques permit. Color appearance/finishing may vary according to amount of coats, style of strokes applied and individual painting methods.



STL-904

RIVER
GREY



▲ **STL-904**
River Grey



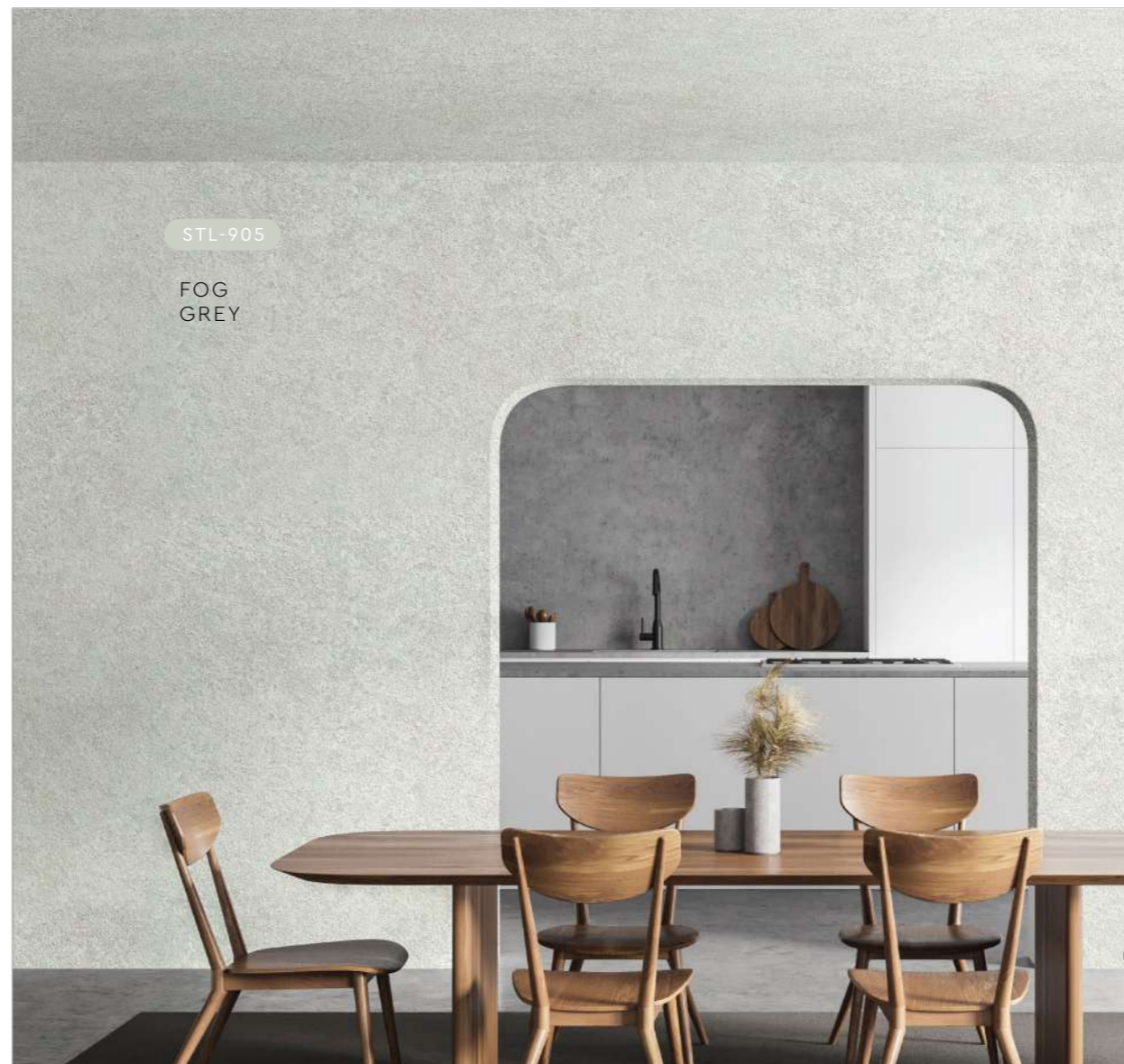
▲ **STL-905**
Fog Grey



STL-906

FROST
GREY

STL-906 ▶
Frost Grey



STL-905

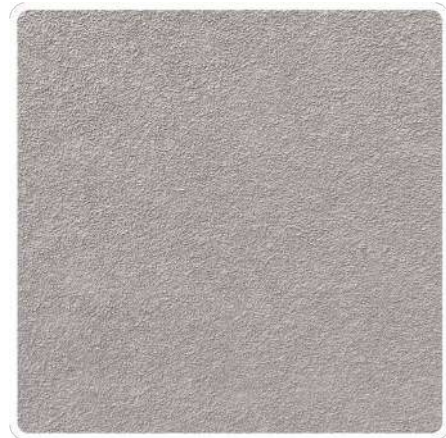
FOG
GREY



▲ **STL-907**
Thunder Grey

STL-907

THUNDER
GREY



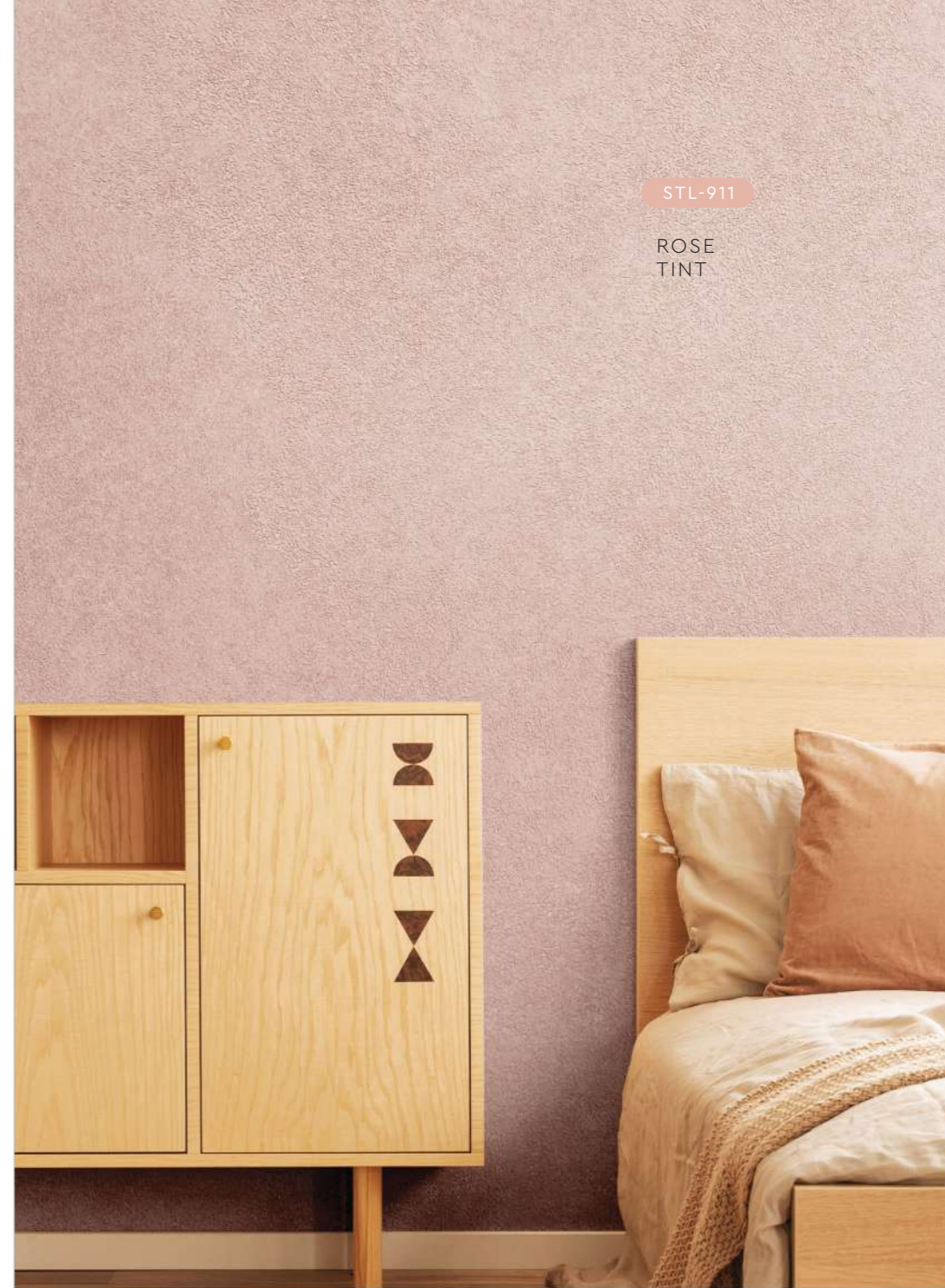
◀ **STL-908**
Smokey Grey



STL-908
SMOKEY
GREY

STL-911

ROSE
TINT



▲ **STL-909**
Lead Grey

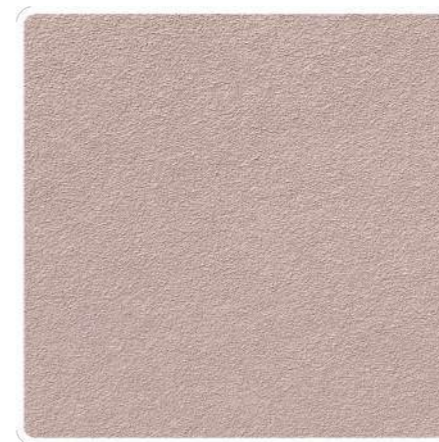
STL-909

LEAD
GREY



STL-910

TAUPE
CREPE



▲ **STL-910**
Taupe Crepe

▲ **STL-911**
Rose Tint

STL-912

BURNT
ORANGE



▲ **STL-912**
Burnt Orange

STL-913

CRAFT
GREY



▲ **STL-913**
Craft Grey



Application Technique

APPLICATION VIDEO



Preparation:

- Cover the edges of surface that won't be painted by masking it with tape, paper or plastic.
- Clean up the wall surface to ensure it is free from dirt and dust.

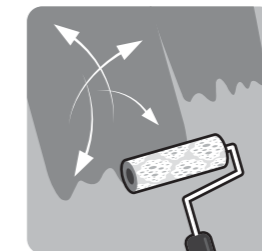


1 Primer

Roll 2 layers of primer on the entire surface. Allow 30 minutes to dry between the layers.

(The primer can be diluted with maximum 5% of clean water)

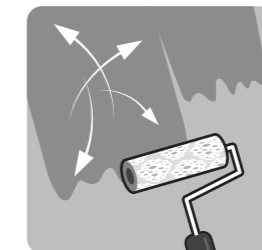
Tool: Paint Roller



2 Texture Coat

Texture Coat (First Layer)

Roll texture coat randomly on the surface. Ensure the whole surface is covered. Let dry.



Texture Coat (Second Layer)

Roll second layer of texture coat randomly on the surface. Let dry.

Tool: Linnen Texture Roller

IMPORTANT:

Color may vary on application technique & amount of material used.



Packing Data

1 L	Primer	Coverage (per set)	9 - 10 sqm (Application on Wall & Ceiling)
2 L	Texture Coat		

* Linnen Texture Roller is sold separately

Tools:



Paint Roller



Linnen
Texture Roller



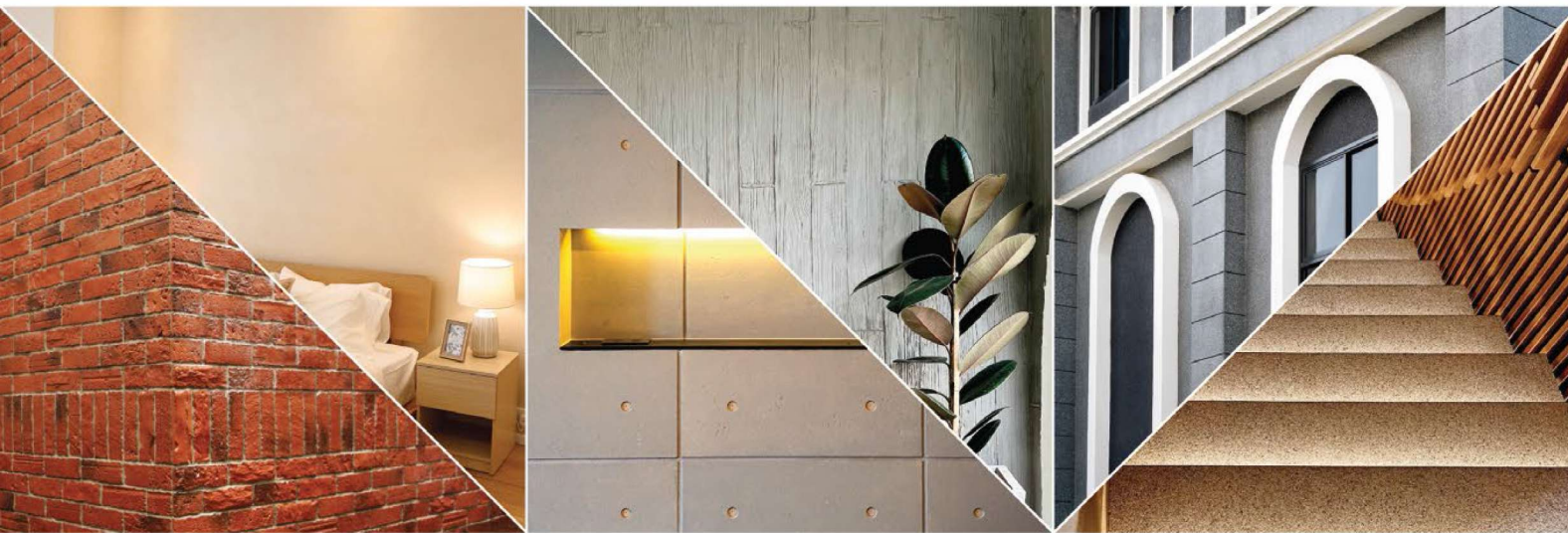
STRATO[®]

CASHMERE & TAFFETA

EDITION
1.1

WALL FINISH PROFESSIONALS

TAIWAN • MALAYSIA • THAILAND



BRICK & STONE VENEER • TEXTURED PAINT • KASTPANEL • ECES • TEXTURE COATING • PEBBLE STONE COATING



nuhaus.org

[nuhaus_brunei](https://www.instagram.com/nuhaus_brunei) | Hotline : +673 730 6870 | 875 9880

* Photos of the products shown in this catalogue may vary in color due to lighting condition & printing. We suggest you examine actual product samples before ordering.



CASHMERE & TAFFETA-E1.1-2401

WALL FINISH
PROFESSIONALS.

SINCE
1977



Chimmery

INTERIOR
TEXTURED PAINTS



SCH-001 Pearl White



SCH-002 Silver Mist



SCH-003 Silver Slate



SCH-004 Platinum Metal



SCH-005 Bronze Age



SCH-006 Sand Castle Beige



SCH-007 Autumn Beige



SCH-008 Eggshell Beige



SCH-009 Desert Gold



Interior Design by
METRICS
GLOBAL

SCH-003 Silver Slate



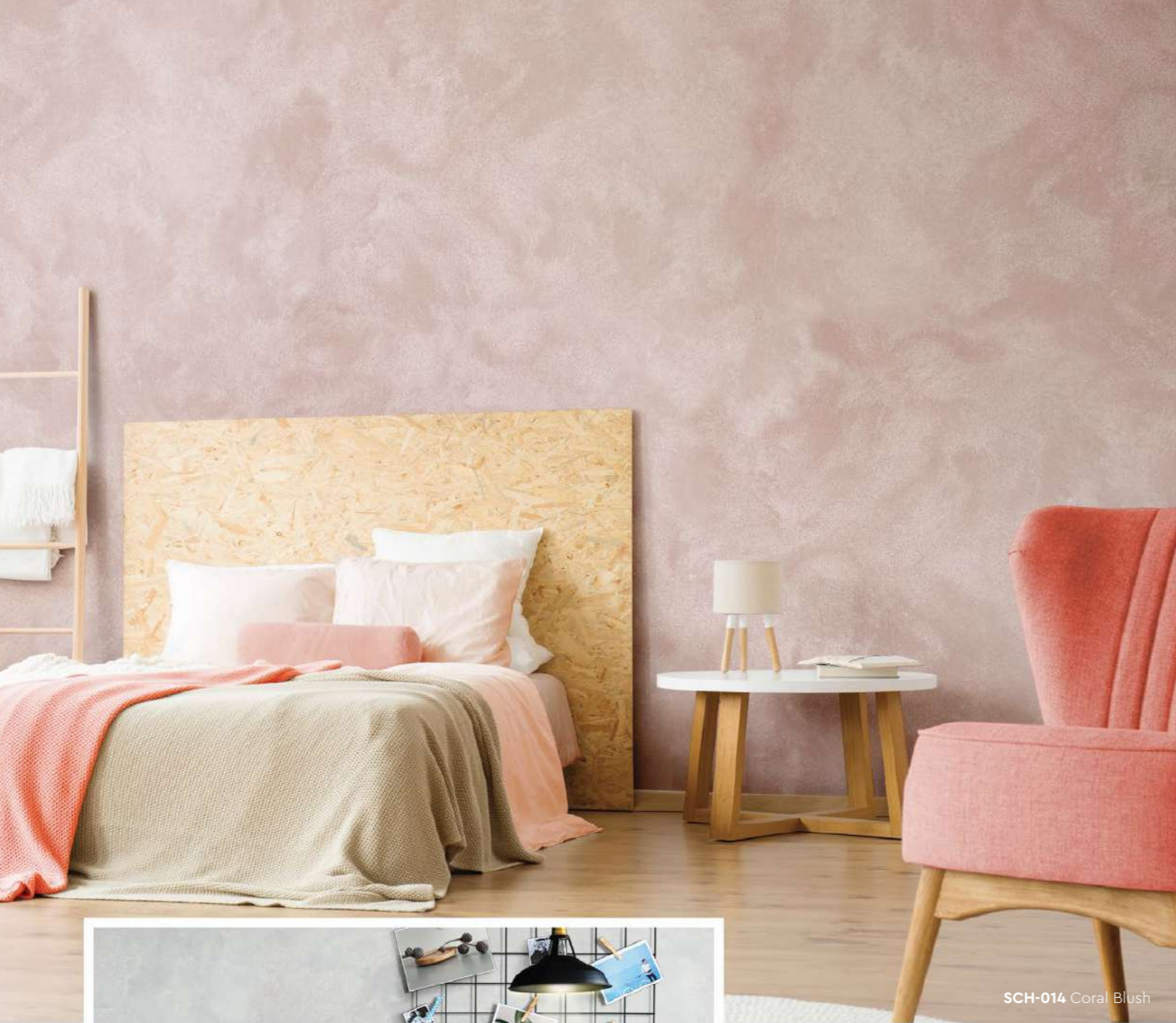
SCH-016 Stardust Silver



SCH-008 Eggshell Beige

All color shown are as close to the actual Suzuka® Strato® colors as modern printing techniques permit, nonetheless, there are still color/tonne differences.

We highly recommend seeing actual samples before ordering.



SCH-014 Coral Blush



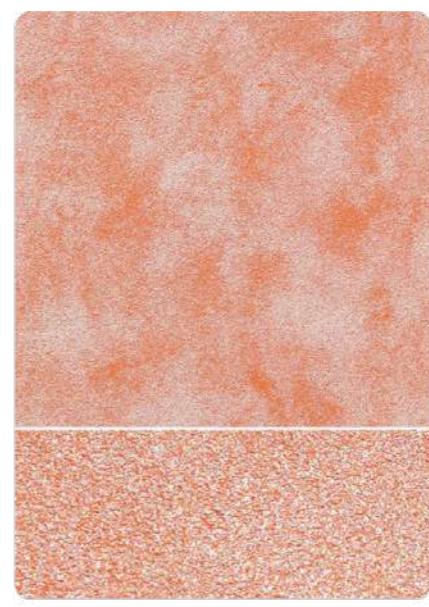
SCH-015 Powder Blue

All color shown are as close to the actual Suzuka® Strato® colors as modern printing techniques permit, nonetheless, there are still color/tone differences.

We highly recommend seeing actual samples before ordering.



SCH-010 Honey Yellow



SCH-011 Peach Blossom



SCH-012 Plum Sunset



SCH-013 Baby Doll Pink



SCH-014 Coral Blush



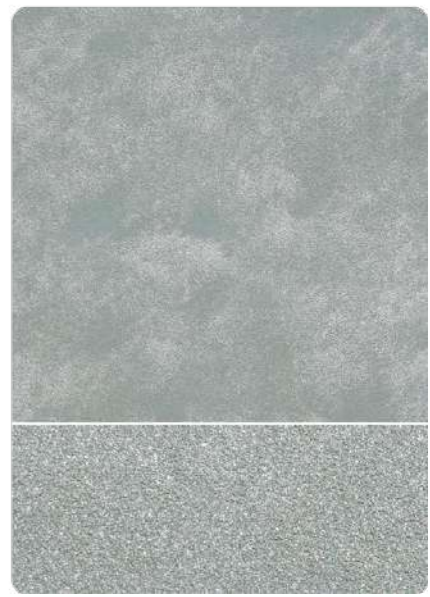
SCH-015 Powder Blue



SCH-016 Stardust Silver



SCH-017 Lace blue



SCH-018 Ash Grey



SCH-006 Sand Castle Beige



SCH-019 Peacock Blue

Strato® Cashmere

Application Video

Application Technique



Preparation:

- Cover the edges of surface that won't be painted by masking it with tape, paper or plastic.
- Clean up the wall surface to ensure it is free from dirt and dust.



1 Primer

Roll 2 layers of primer on the entire surface. Allow 30 minutes to dry between the layers. (The primer can be diluted with maximum 5% of clean water)

Tool: Roller



2 Texture Coat

Brush on texture coat in criss cross patterns. Apply 1-2 layers. Ensure the whole surface area is covered.

Tool: Brush



3 Flattening

Flatten the entire surface in circular motion to enhance the pattern.

Tool: Plastic Scrapper



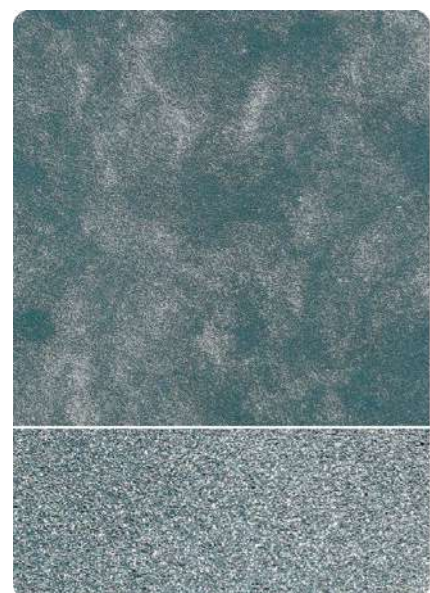
4 Topcoat

Evenly roll SR-Top 3 on entire surface. Allow to dry for 1 hour.

Tool: Roller

IMPORTANT:

Color may vary on application technique & amount of material used.



SCH-019 Peacock Blue



SCH-020 Olive Tree



SCH-021 Tropical Garden



Packing Data

1 L	Primer
1 L	Texture Coat
1 L	Topcoat (SR-Top 3)

Coverage (per set)

WALL	6 - 7 sqm
CEILING	5 - 6 sqm



Tools: Roller, Brush & Plastic Scrapper

STRATO®
Taffeta

SRT





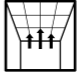

SRT 201 - 233

A vibrant color layered in texture and dusted with a shimmering pearl effect crafts a bold and radiant feel onto the wall.

Appearance

Low Sheen	● ● ● ● ●	High Sheen
Smooth Texture	● ● ● ● ●	Rough Texture
Matte	● ● ● ● ●	Metallic

Features

 Low VOC & Odor	 Green Choice, Water Based & Eco-friendly
 Formaldehyde & Lead Free	 Easy Application & DIY Friendly
 Applicable on Ceiling	 Easy Maintenance
 Shimmering Finish	

• Interior use only



SRT-201 Pewter Grey



SRT-203 Light Steel Blue



SRT-209 Light Sephia



SRT-214 Light Sapphire



SRT-219 Oyster Beige



SRT-225 Blue Waves



SRT-231 Malted Mocha



SRT-232 Pale Lavender



SRT-233 Ocean Surface



SRT-201 Pewter Grey



SRT-214 Light Sapphire



SRT-203 Light Steel Blue

All color shown are as close to the actual Suzuka® Strato® colors as modern printing techniques permit, nonetheless, there are still color/tonne differences.

We highly recommend seeing actual samples before ordering.



SRT-232 Pale Lavender

Strato® Taffeta

Application Video

Application Technique



Preparation:

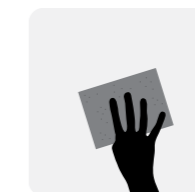
- Cover the edges of surface that won't be painted by masking it with tape, paper or plastic.
- Clean up the wall surface to ensure it is free from dirt and dust.



1 Primer

Roll 2 layers of primer on the entire surface. Allow 30 minutes to dry between the layers. (The primer can be diluted with maximum 5% of clean water)

Tool: Roller



2 Sanding (Optional)

Sand the entire surface in circular motion to ensure the surface is smooth.

Tool: 600 Grit Sand Paper



3 Texture Coat

Scrape texture coat in a random criss cross pattern. 2-3 layers. Every layer requires 30 minutes to dry.

Tool: Stainless Steel Scrapper



4 Sanding

Sand the entire surface in circular motion to enhance the pattern.

Tool: 600 Grit Sand Paper



5 Topcoat

Scrape on topcoat SR-Top 2 in a random criss cross overlapping patterns. Allow 1 hour to dry.

Taffeta has a shimmering pearl effect topcoat. For a matte finishing, please request SR-Top 1.

Tool: Stainless Steel Scrapper

IMPORTANT:

Color may vary on application technique & amount of material used.

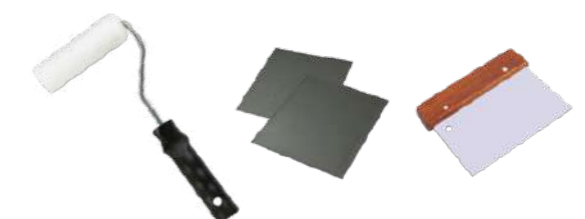


Packing Data

1 L	Primer
1 L	Texture Coat
0.5 L	Topcoat (SR-Top 2)

Coverage (per set)

WALL	4.5 sqm
CEILING	3.5 sqm



Tools: Roller, Sand Paper (600 Grit) & Stainless Steel Scrapper.



STRATO®

Metallics

EDITION
02

WALL FINISH PROFESSIONALS

TAIWAN • MALAYSIA • THAILAND

STRATO® MERINO & ORGANZA

INTERIOR
TEXTURED PAINTS



BRICK & STONE VENEER • TEXTURED PAINT • KASTPANEL • ECES • TEXTURE COATING • PEBBLE STONE COATING

WALL FINISH
PROFESSIONALS.

SINCE
1977



nuhaus.org

[nuhaus_brunei](https://www.instagram.com/nuhaus_brunei) | Hotline : +673 730 6870 | 875 9880

* Photos of the products shown in this catalogue may vary in color due to lighting condition & printing. We suggest you examine actual product samples before ordering.



METALLICS-E2-2311

STRATO® Metallics

1

STRATO® MERINO

Page 3 - 10

2

STRATO® ORGANZA

Page 11 - 18



SUZUKA® WALL SEALER PRO

“ Make your
wall finishes
last longer! ”



Packing Size: **1L** **5L** **20L**

Superior primer for concrete, skimmed or masonry surfaces.

This sealer that has good substrate penetration abilities to increase adhesion of product to prevent chalking or peeling off.

It has excellent alkaline resistance properties that can prevent efflorescence. It is an ideal base coat for any SUZUKA® or any wall finish products.

Coverage	Drying Time (hour)	
6.5 - 8.5 m ² /l/coat	Surface Dry : 1	Substrate Temperature: 23°C - 26°C
	Hard Dry : 5	
	Recoating : 5	

Features:

- Excellent alkaline resistance to prevent efflorescence.
- Good for new walls and repainting.
- Prevents skim coat from chalking & peeling off.
- Extremely good penetration.
- Excellent adhesion.
- Exterior and interior use.
- Applicable with brush, roller or spray gun.

Suitable for:

- Masonry wall
- Brickwork
- Plaster
- Skimmed Coat
- Asbestos free substrate

Airless Spray		
Nozzle	Spray Angle Degree	Pressure
1.8 - 2.0 mm	65° - 80°	210 psi/150kg/cm²

STRATO® Merino

SMM

SMM 801 - 814

A striking textured metallic pattern that is linen like.
Strato® Merino not only can suit elegant but also rustic designs.

Appearance

Low Sheen	<input type="radio"/>	<input type="radio"/>	<input type="radio"/>	<input checked="" type="radio"/>	<input type="radio"/>	High Sheen
Smooth Texture	<input type="radio"/>	<input type="radio"/>	<input type="radio"/>	<input type="radio"/>	<input checked="" type="radio"/>	Rough Texture
Matte	<input type="radio"/>	<input type="radio"/>	<input type="radio"/>	<input type="radio"/>	<input checked="" type="radio"/>	Metallic

Features



Low VOC
& Odor



Green Choice, Water
Based & Eco-friendly



Formaldehyde
& Lead Free



Easy Application
& DIY Friendly



Applicable
on Ceiling



Easy to
Touch Up



Easy
Maintenance



Metallic
Finish

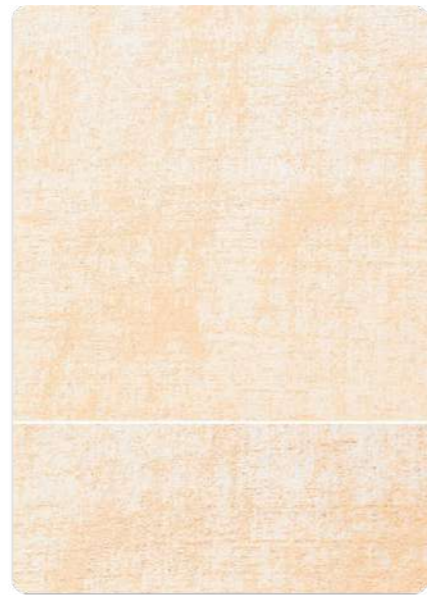
• Interior use only



SMM-801 Crystal White



SMM-802 Vanilla White



SMM-803 Light Beige



SMM-804 Dewy Rose



SMM-805 Peach Passion



SMM-806 Dusty Mauve



SMM-807 Tippy Taupe



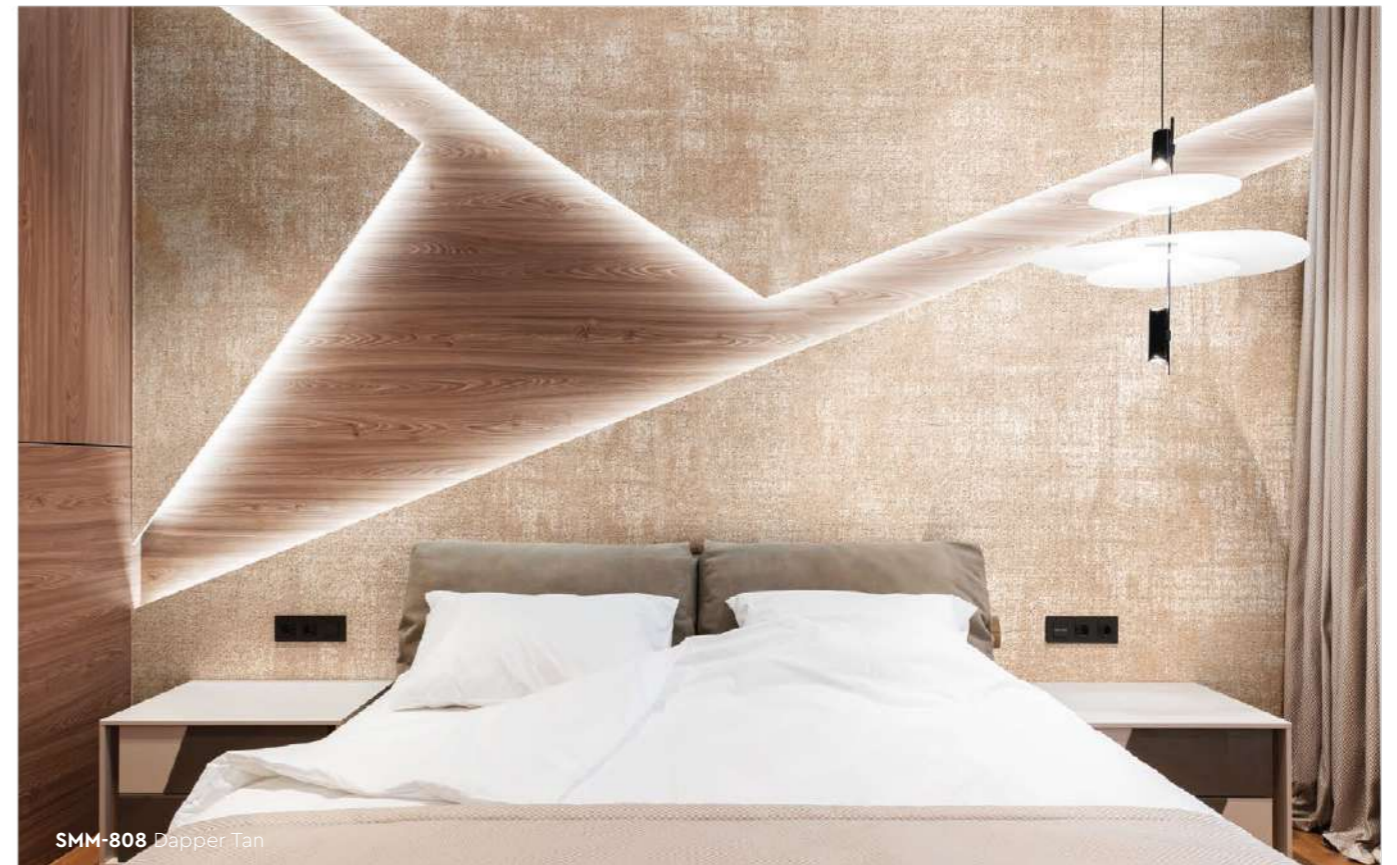
SMM-808 Dapper Tan

All color shown are as close to the actual Suzuka® Strato® colors as modern printing techniques permit, nonetheless, there are still color/tone differences.

We highly recommend seeing actual samples before ordering.



SMM-811 Frost Grey



SMM-808 Dapper Tan



SMM-811 Frost Grey



SMM-801 Crystal White



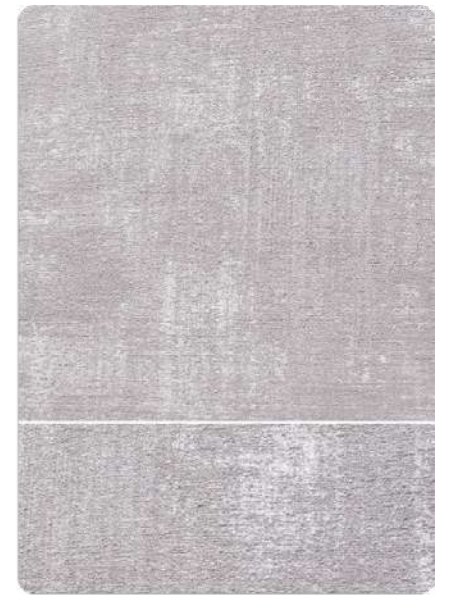
SMM-810 Lilac Grey



SMM-805 Peach Passion



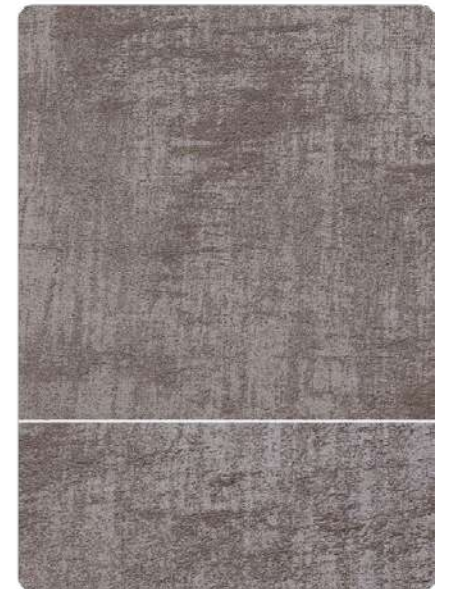
SMM-809 Lime Grey



SMM-810 Lilac Grey



SMM-811 Frost Grey



SMM-812 Suede Grey



SMM-813 Rocky Grey



SMM-814 Dark Rust

All color shown are as close to the actual Suzuka® Strato® colors as modern printing techniques permit, nonetheless, there are still color/tone differences.

We highly recommend seeing actual samples before ordering.



SMM-814 Dark Rust



SMM-802 Vanilla White



SMM-811 Frost Grey

Strato® Merino

Application Video

Application Technique



Preparation:

- Cover the edges of surface that won't be painted by masking it with tape, paper or plastic.
- Clean up the wall surface to ensure it is free from dirt and dust.



1 Primer

Roll 2 layers of primer on the entire surface. Allow 30 minutes to dry between the layers. (The primer can be diluted with maximum 5% of clean water)

Tool: Roller



2 Sanding

Sand the entire surface in circular motion to ensure the surface is smooth.

Tool: 600 Grit Sand Paper



3 Texture Coat

Texture Coat (First Layer)

First, brush texture coat horizontally on the surface. Let dry for 30 - 40 minutes.



Texture Coat (Second Layer)

Next, brush texture coat vertically on the surface. Let dry for 30 - 40 minutes.

Tool: Brush

IMPORTANT:

Color may vary on application technique & amount of material used.

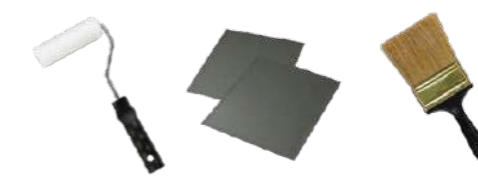


Packing Data

1 L	Primer
1 L	Texture Coat

Coverage (per set)

WALL	3 - 4 sqm
CEILING	2.5 - 3.5 sqm



Tools: Roller, Sand Paper (600 Grit) & Brush

STRATO®
Organza



SMO

SMO 701 - 717

A smooth textured pattern with rich and creamy metallic finish that is suitable for all interior designs.

Appearance

Low Sheen	<input type="radio"/>	<input type="radio"/>	<input type="radio"/>	<input checked="" type="radio"/>	<input type="radio"/>	High Sheen
Smooth Texture	<input checked="" type="radio"/>	<input type="radio"/>	<input type="radio"/>	<input type="radio"/>	<input type="radio"/>	Rough Texture
Matte	<input type="radio"/>	<input type="radio"/>	<input type="radio"/>	<input type="radio"/>	<input checked="" type="radio"/>	Metallic

Features



Low VOC & Odor



Green Choice, Water Based & Eco-friendly



Formaldehyde & Lead Free



Easy Application & DIY Friendly



Applicable on Ceiling



Easy to Touch Up



Easy Maintenance



Metallic Finish

• Interior use only



SMO-701 Floral Beige



SMO-702 Sandy Beige



SMO-703 Lotus Blossom



SMO-704 Lavender



SMO-705 Space Grey



SMO-706 Pewter Grey



SMO-707 Blue Ash



SMO-708 Antique Blue

All color shown are as close to the actual Suzuka® Strato® colors as modern printing techniques permit, nonetheless, there are still color/tone differences.

We highly recommend seeing actual samples before ordering.



SMO-703 Lotus Blossom





SMO-702 Sandy Beige

SMO-705 Space Grey

All color shown are as close to the actual Suzuka® Strato® colors as modern printing techniques permit, nonetheless, there are still color/tone differences.

We highly recommend seeing actual samples before ordering.



SMO-709 Lava Grey



SMO-710 Plum Violet



SMO-711 Dark Amber



SMO-712 Antique Wood



SMO-713 Pale Mustard



SMO-714 Olive Garden



SMO-715 Seal Grey



SMO-716 Fossil Grey



SMO-717 Sage Green



Strato® Organza

Application Technique

Application Video



Preparation:

- Cover the edges of surface that won't be painted by masking it with tape, paper or plastic.
- Clean up the wall surface to ensure it is free from dirt and dust.

IMPORTANT:

Color may vary on application technique & amount of material used.



Tools: Roller, Sand Paper (600 Grit) Trowel & Piccolo Tool



1 Primer

Roll 2 layers of primer on the entire surface. Allow 30 minutes to dry between the layers. (The primer can be diluted with maximum 5% of clean water)

Tool: Roller

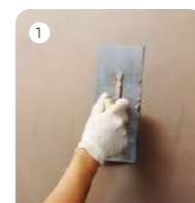


2 Sanding

Sand surface with sandpaper (600 grit) to ensure a smooth surface.

Tool: 600 Grit Sand Paper

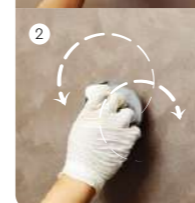
Texture Coat Options



3A Texture Coat Piccolo Pattern

Texture Coat (First Layer)

(1) scrape texture coat evenly on the surface. (2) Use piccolo tool to create texture effects by moving with random motion. Let dry for 30 to 40 minutes.



Texture Coat (Second Layer)

Repeat the steps for a second layer of texture coat. Let dry for 30 to 40 minutes.

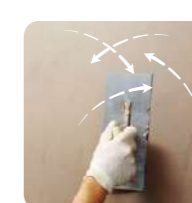
Tool: Trowel & Piccolo Tool



3B Texture Coat Trowel Pattern

Texture Coat (First Layer)

Scrape texture coat evenly on the surface. Let dry for 30 to 40 minutes.



Texture Coat (Second Layer)

Scrape texture coat randomly on the surface to create texture. Let dry for 30 to 40 minutes.

Tool: Trowel



Packing Data

1 L	Primer
1 L	Texture Coat

* Piccolo tool is sold separately

Coverage (per set)

WALL	6 - 7 sqm
CEILING	5 - 6 sqm



STRATO[®] SATIN

EDITION
02

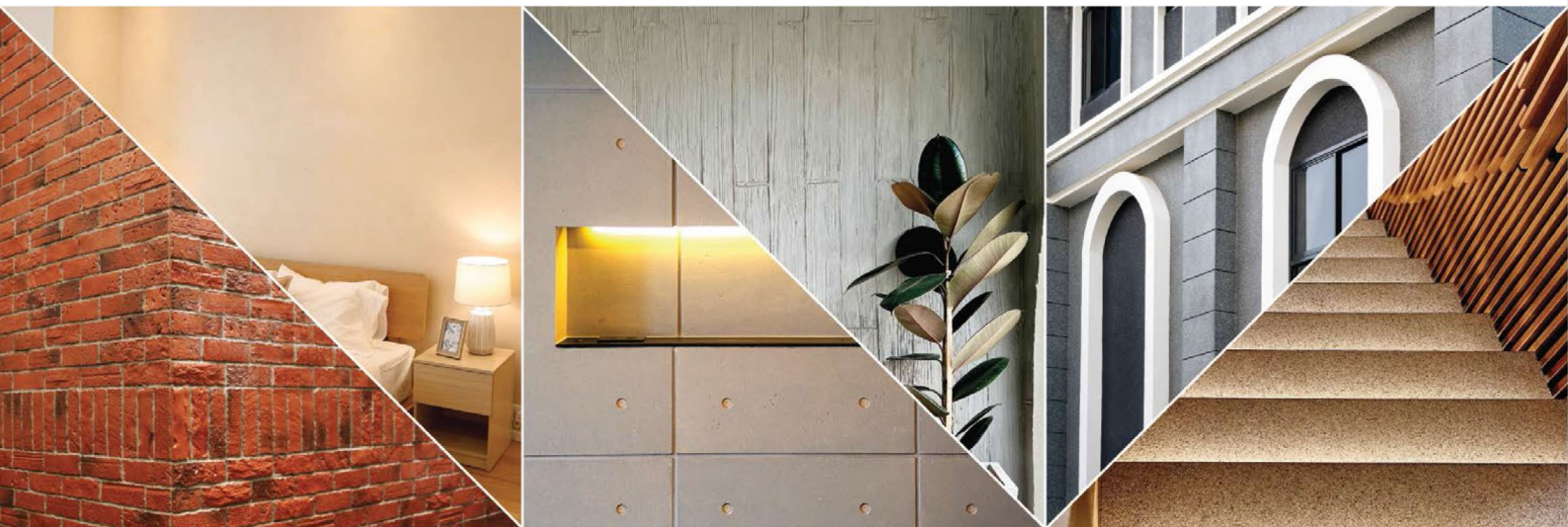
WALL FINISH PROFESSIONALS

TAIWAN • MALAYSIA • THAILAND



*Smooth &
Pearlescent*

INTERIOR
TEXTURED PAINTS



BRICK & STONE VENEER • TEXTURED PAINT • KASTPANEL • ECES • TEXTURE COATING • PEBBLE STONE COATING

WALL FINISH
PROFESSIONALS.

SINCE
1977



nuhaus.org

[nuhaus_brunei](https://www.instagram.com/nuhaus_brunei) | Hotline : +673 730 6870 | 875 9880

* Photos of the products shown in this catalogue may vary in color due to lighting condition & printing. We suggest you examine actual product samples before ordering.



SATIN-E2-2312

STRATO®
Satin



STS

STS 501 – 509

The Strato® Satin collection highlights an array of soft-hued silky colours, creating a creamy and pearly finish for a sophisticated and refined look.

Pick from a range of light to dark pastel tones to match any kind of environment, whether it's a bedroom, café, or office space.

Appearance

Low Sheen	● ● ● ● ●	High Sheen
Smooth Texture	● ● ● ● ●	Rough Texture
Matte	● ● ● ● ●	Metallic

Features



Low VOC & Odor



Green Choice, Water Based & Eco-friendly



Formaldehyde & Lead Free



Easy Application & DIY Friendly



Applicable on Ceiling



Easy to Touch Up



Easy Maintenance



Satin Finish

• Interior use only



STS-501 Floral White



STS-502 Seashell



STS-503 Misty Rose



STS-501 Floral White



STS-502 Seashell

All color shown are as close to the actual Suzuka® Strato® colors as modern printing techniques permit, nonetheless, there are still color/tone differences.

We highly recommend seeing actual samples before ordering.



STS-504 Peach Puff



STS-504 Peach Puff



STS-506 Ash Blonde



STS-506 Ash Blonde



STS-506 Ash Blonde

All color shown are as close to the actual Suzuka® Strato® colors as modern printing techniques permit, nonetheless, there are still color/tonne differences.

We highly recommend seeing actual samples before ordering.



STS-504 Peach Puff



STS-505 Milky Latte



STS-506 Ash Blonde



STS-505 Milky Latte



STS-508 Pale Green



STS-507 Slate Grey



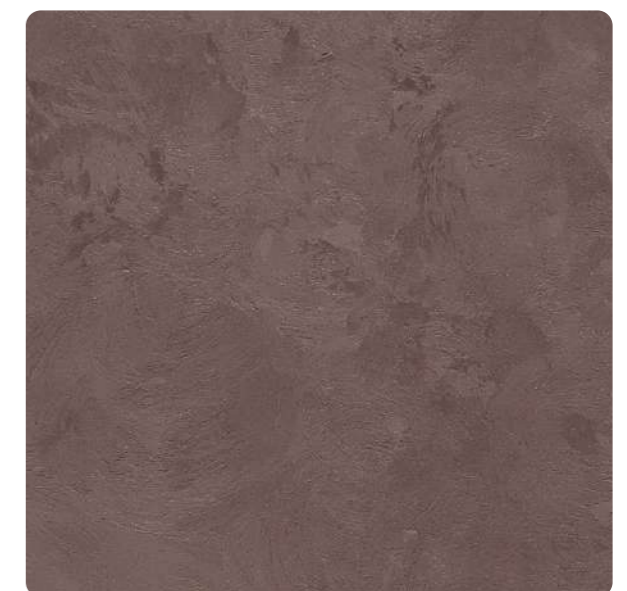
STS-505 Milky Latte



STS-507 Slate Grey



STS-508 Pale Green



STS-509 Rust

All color shown are as close to the actual Suzuka® Strato® colors as modern printing techniques permit, nonetheless, there are still color/tone differences.

We highly recommend seeing actual samples before ordering.



STS-508 Pale Green

STS-509 Rust

Strato® Satin Application Technique



- Preparation:
- Cover the edges of surface that won't be painted by masking it with tape, paper or plastic.
 - Clean up the wall surface to ensure it is free from dirt and dust.



1 Primer

Roll 2 layers of primer on the entire surface. Allow 30 minutes to dry between the layers. (The primer can be diluted with maximum 5% of clean water)

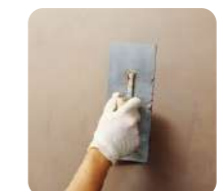
Tool: Roller



2 Sanding

Sand the entire surface in circular motion to ensure the surface is smooth.

Tool: 600 Grit Sand Paper

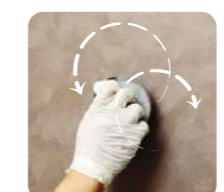


3 Texture Coat

Step A : Trowel

Scrape texture coat evenly onto the surface.

Tool: Stainless Steel Trowel



Step B : Piccolo

Use piccolo tool to create texture effects by moving with random motion. Let dry for 30 to 40 minutes.

Tool: Piccolo Tool

IMPORTANT:
Color may vary on application technique & amount of material used.



Tools: Roller, Sand Paper (600 Grit) Trowel & Piccolo Tool

SUZUKA® WALL SEALER PRO

“ Make your wall finishes last longer! ”

Superior primer for concrete, skimmed or masonry surfaces.

This sealer that has good substrate penetration abilities to increase adhesion of product to prevent chalking or peeling off. It has excellent alkaline resistance properties that can prevent efflorescence. It is an ideal base coat for any SUZUKA® or any wall finish products.

Packing Size: **1L 5L 20L**

Coverage	Drying Time (hour)		
6.5 - 8.5 m ² /l/coat	Surface Dry : 1	Hard Dry : 5	Recoating : 5
	Substrate Temperature: 23°C - 26°C		

Suitable for:

- Masonry wall
- Brickwork
- Plaster
- Skimmed Coat
- Asbestos free substrate

Features:

- Excellent alkaline resistance to prevent efflorescence.
- Good for new walls and repainting.
- Prevents skim coat from chalking & peeling off.
- Extremely good penetration.
- Excellent adhesion.
- Exterior and interior use.
- Applicable with brush, roller or spray gun.

Airless Spray	Nozzle	Spray Angle Degree	Pressure
	1.8 - 2.0 mm	65° - 80°	210 psi/150kg/cm²



Packing Data

1 L	Primer
1 L	Texture Coat

* Piccolo tool is sold separately

Coverage (per set)	
WALL	6 - 7 sqm
CEILING	5 - 6 sqm