

JUMBO SPRAY TILE



SUZUKA TEXTURE COATING

TAIWAN • MALAYSIA • THAILAND

NUHAUS ENTERPRISE

Ground Floor, No 13, Block B, Simpang 188,
Jln Pg Babu Raja, Bandar Seri Begawan, Brunei Darussalam

W nuhaus.org

Hotline: +673 730 6870 | 875 9880

Instagram Facebook [nuhaus_brunei](https://www.facebook.com/nuhaus_brunei)



JUMBO SPRAY TILE



SPECIFICATION & METHOD STATEMENT

OUTLINE OF APPLICATION

Process	Material	Mixing (Weight Ratio)	Number Of Coat	Interval Time To Proceed Next Process (Hrs)	Consumption	Tools Of Application	
1	Surface Preparation	Surface shall be dry and free from dirt, oil, grease and foreign matters. Surface unevenness, crack and pin hole shall be treated with cement filler.					
2	Under Coating	EM Sealer : Water	100 : 0-2	1	3	0.15 - 0.20ltr/m ²	Roller or Brush
3	Texture Coating	Jumbo Tile : Water	100 : 0-5	1	24	1.0 - 1.6kg/m ²	Spray Gun
4	Top Coating	Acrylic Emulsion : Water	100 : 0-2	2	-	0.32 - 0.48ltr/m ²	Roller or Brush

JUMBO SPRAY TILE



JUMBO-HEAD CUT WITH PU COATING (L)



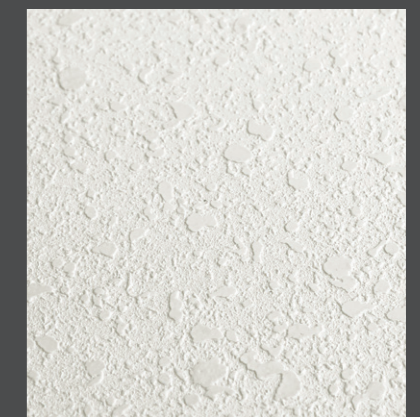
JUMBO-HEAD CUT (L)



JUMBO-HEAD CUT (L)



JUMBO-HEAD CUT (M)



JUMBO-HEAD CUT (S)



JUMBO-NORMAL (L)



JUMBO-NORMAL (M)



JUMBO-NORMAL (S)